

| | | |
|--|------------------------|---|
| WAAS CH 49015 W09A | APP CRS 088° | Rwy Idg 7000 TDZE 80 Apt Elev 80 |
|--|------------------------|---|

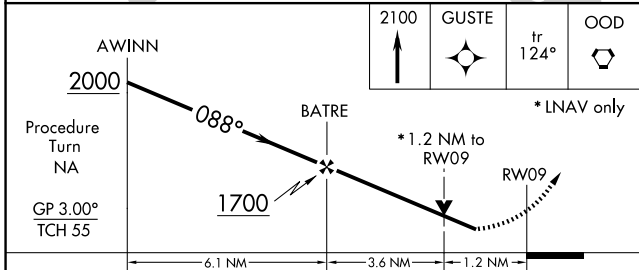
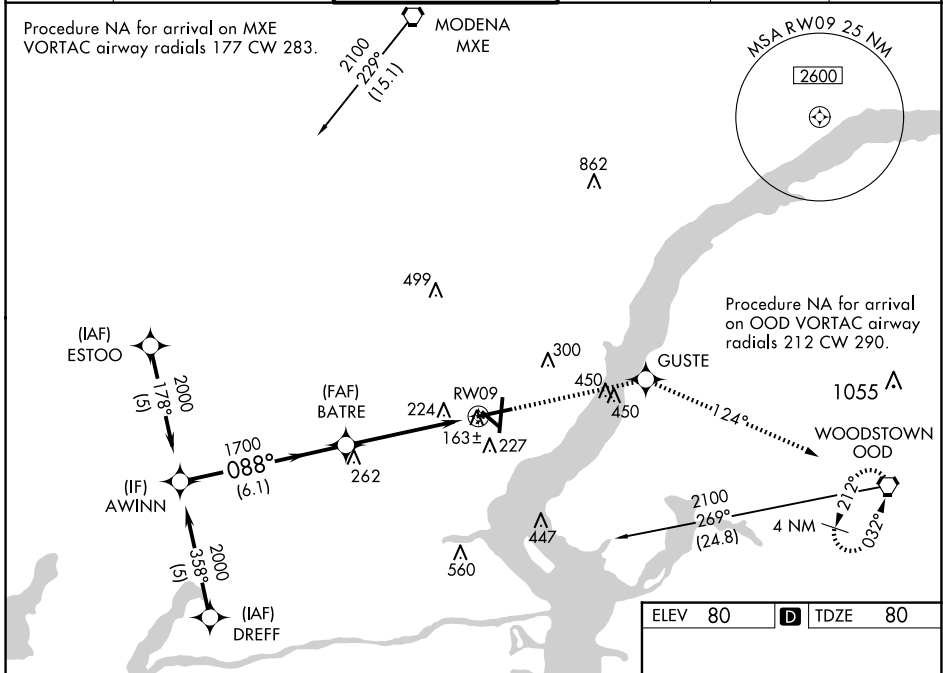
RNAV (GPS) RWY 9

NEW CASTLE (ILG)

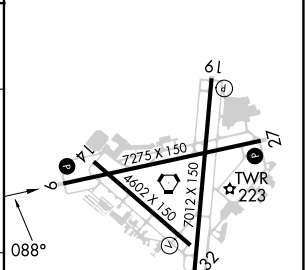
⚠ For uncompensated Baro-VNAV systems, LNAV/VNAV NA below -1.5°C (5°F) or above 48°C (118°F). DME/DME RNP-0.3 NA. Helicopter visibility reduction below ¾ mile NA. VDP and Baro-VNAV NA when using Philadelphia Intl altimeter setting. When local altimeter setting not received, use Philadelphia Intl altimeter setting: increase LPV DA to 448, LNAV/VNAV DA to 568, and all MDAs 60 feet; increase LPV all Cats and Circling Cat D visibility ¼ SM and LNAV/VNAV all Cats visibility ½ SM.

MSA APPROACH:
Climb to 2100 direct GUSTE and via track 124° to OOD VORTAC and hold.

| | | | | | |
|-----------------------|---|---|-------------------------------|---------------------------|-------------------------|
| ATIS 123.95 | PHILADELPHIA APP CON 118.35 323.1 | WILMINGTON TOWER ★ 126.0 (CTAF) 352.05 | GND CON 121.7 275.8 | CLNC DEL 119.95 | UNICOM 122.95 |
|-----------------------|---|---|-------------------------------|---------------------------|-------------------------|



| | |
|---------|------------------|
| ELEV 80 | D TDZE 80 |
|---------|------------------|



| CATEGORY | A | B | C | D |
|------------|----------------------|----------------------|------------------------|------------------------|
| LPV DA | 394-1 314 (400-1) | | | |
| LNAV/ VNAV | 521-1½ 441 (500-1½) | | | |
| LNAV MDA | 520-1 440 (500-1) | | 520-1¼ 440 (500-1¼) | |
| CIRCLING | 540-1 460 (500-1) | 560-1 480 (500-1) | 600-1½ 520 (600-1½) | 800-2¼ 720 (800-2¼) |

REIL Rwy 9, 19 and 27 **Ⓛ**
HIRL Rwy 1-19 and 9-27 **Ⓛ**
MIRL Rwy 14-32 **Ⓛ**

NE-3, 20 MAR 2025 to 17 APR 2025

NE-3, 20 MAR 2025 to 17 APR 2025