

LOC I-GMX <b>111.55</b>	APP CRS <b>238°</b>	Rwy Idg <b>8016</b> TDZE <b>26</b> Apt Elev <b>32</b>
----------------------------	------------------------	---

# ILS Y or LOC RWY 24

WILMINGTON INTL (ILM)

**⚠️** \*\*RVR 1800 authorized with use of FD or AP or HUD to DA. ADF required.

**MALSR**  


**MISSED APPROACH:** Climb to 500 then climbing right turn to 1800 direct WILZE LOM and hold.

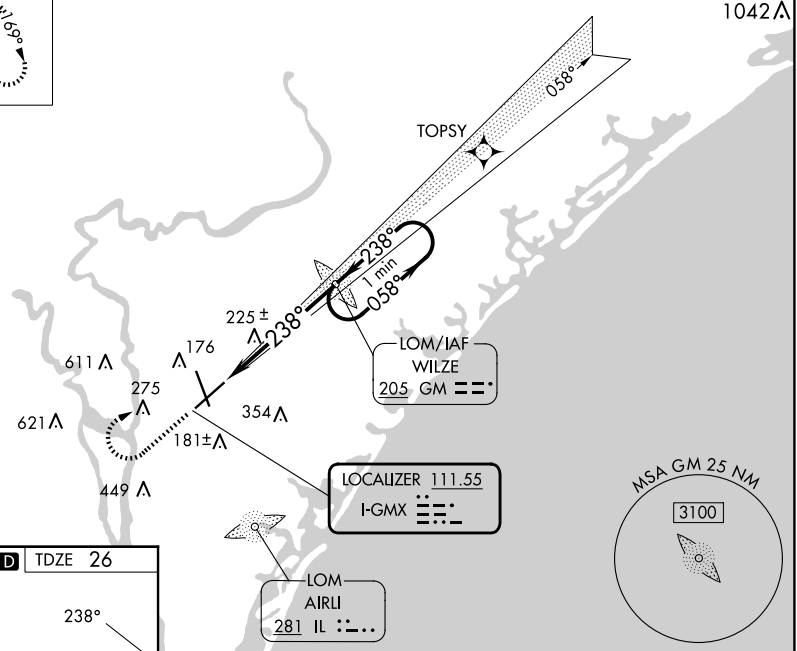
ATIS <b>124.975</b>	WILMINGTON APP CON* <b>118.25 284.65</b> (164°-343°) <b>135.75 317.425</b> (344°-163°)	WILMINGTON TOWER* <b>119.9</b> (CTAF) <b>0 239.3</b>	GND CON <b>121.9 348.6</b>	CLNC DEL <b>120.875</b>	UNICOM <b>122.95</b>
------------------------	--	---	-------------------------------	----------------------------	-------------------------

ALTERNATE MISSED APCH FIX

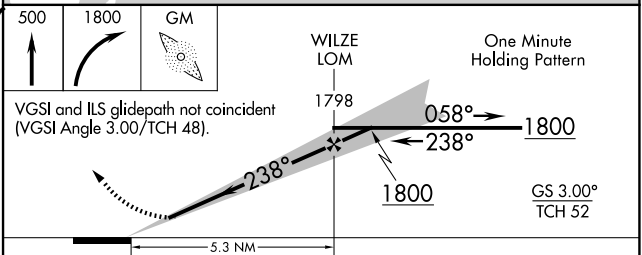
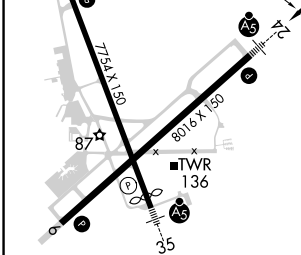
AIRLI  
IL ::...  
**281**



## RNAV 1-GPS or RADAR REQUIRED



ELEV 32	<b>D</b>	TDZE 26
---------	----------	---------



HIRL Rwy 6-24 and 17-35 <b>Ⓛ</b> REIL Rwy 6 and 17 <b>Ⓛ</b>	FAF to MAP 5.3 NM				
Knots	60	90	120	150	180
Min:Sec	5:18	3:32	2:39	2:07	1:46
<b>C</b> CIRCLING	560-1	528 (600-1)	720-2 688 (700-2)	920-3 888 (900-3)	

SE-2, 20 MAR 2025 to 17 APR 2025

SE-2, 20 MAR 2025 to 17 APR 2025