

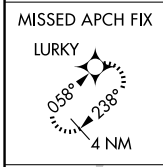
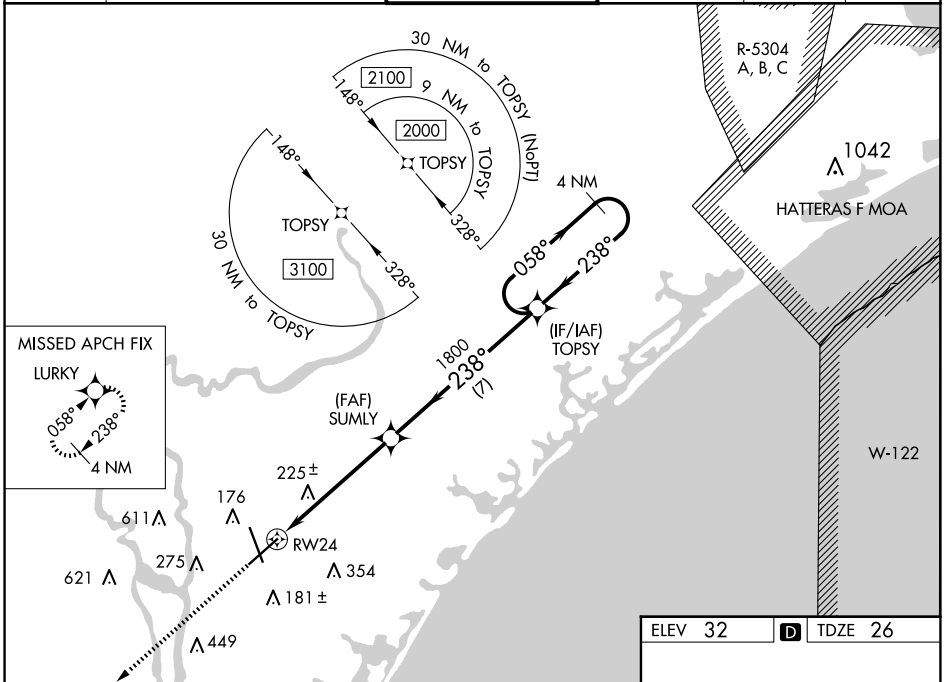
WAAS CH <b>45899</b> <b>W24A</b>	APP CRS <b>238°</b>	Rwy Idg TDZE Apt Elev	<b>8016</b> <b>26</b> <b>32</b>
--	------------------------	-----------------------------	---------------------------------------

# RNAV (GPS) RWY 24

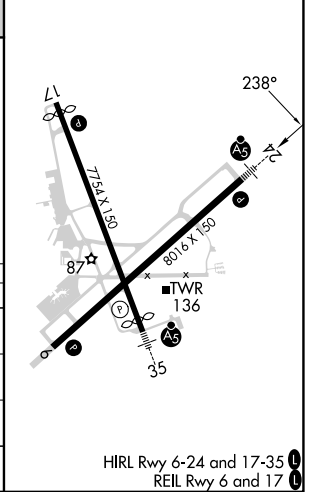
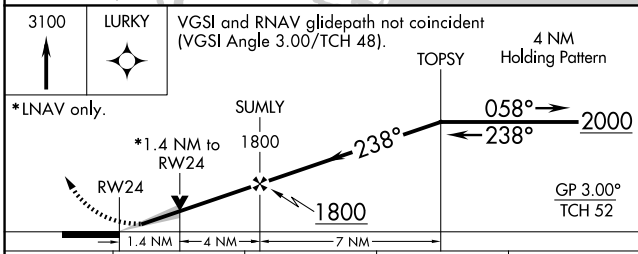
WILMINGTON INTL (ILM)

<p>For uncompensated Baro-VNAV systems, LNAV/VNAV NA below -7°C (20°F) or above 54°C (130°F). DME/DME RNP-0.3 NA. **RVR 1800 authorized with use of FD or AP or HUD to DA.</p>	<b>MALSRL</b> 		<b>MISSED APPROACH:</b> Climb to 3100 direct LURKY and hold.	
	<b>ATIS</b> <b>124.975</b>		<b>WILMINGTON APP CON*</b> <b>118.25 284.65</b> (164°-343°) <b>135.75 317.425</b> (344°-163°)	

<b>WILMINGTON TOWER*</b> <b>119.9</b> (CTAF) <b>0 239.3</b>		<b>GND CON</b> <b>121.9 348.6</b>	<b>CLNC DEL</b> <b>120.875</b>	<b>UNICOM</b> <b>122.95</b>
--	--	--------------------------------------	-----------------------------------	--------------------------------



ELEV 32	D	TDZE 26
---------	---	---------



CATEGORY	A	B	C	D
LPV DA **	226/24 200 (200-½)			
LNAV/VNAV DA	401/40 375 (400-¾)			
LNAV MDA	500/24 474 (500-½)		500/50 474 (500-1)	
<b>C</b> CIRCLING	560-1 528 (600-1)		720-2 688 (700-2)	920-3 888 (900-3)

SE-2, 20 MAR 2025 to 17 APR 2025

SE-2, 20 MAR 2025 to 17 APR 2025