

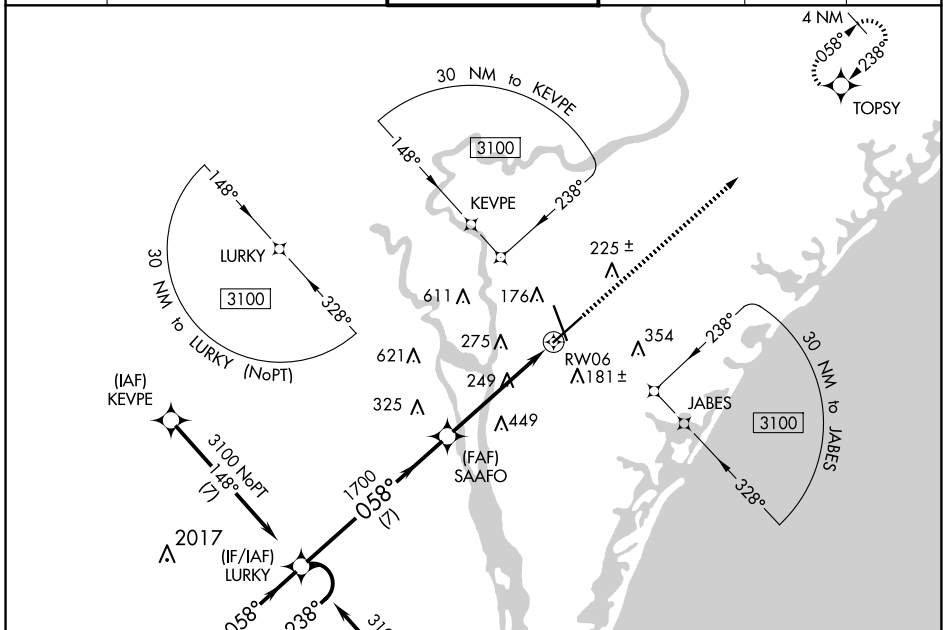
WAAS CH <b>86599</b> <b>W06A</b>	APP CRS <b>058°</b>	Rwy Idg <b>8016</b> TDZE <b>28</b> Apt Elev <b>32</b>
--	------------------------	---

# RNAV (GPS) RWY 6

WILMINGTON INTL (ILM)

<p><b>⚠</b> For uncompensated Baro-VNAV systems, LNAV/VNAV NA below -7°C (20°F) or above 54°C (130°F). DME/DME RNP-0.3 NA.</p>	<p>MISSED APPROACH: Climb to 2000 direct TOPSY and hold.</p>
--	--

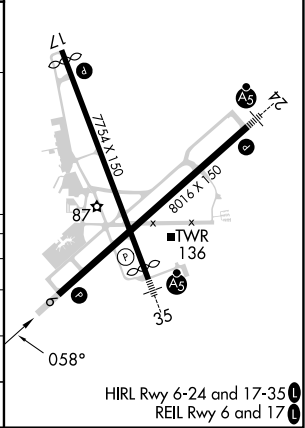
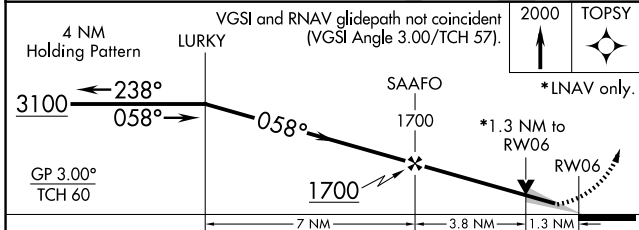
<p>ATIS <b>124.975</b></p>	<p>WILMINGTON APP CON★ <b>118.25 284.65</b> (164°-343°) <b>135.75 317.425</b> (344°-163°)</p>	<p>WILMINGTON TOWER★ <b>119.9</b> (CTAF) <b>0 239.3</b></p>	<p>GND CON <b>121.9 348.6</b></p>	<p>CLNC DEL <b>120.875</b></p>	<p>UNICOM <b>122.95</b></p>
--------------------------------	---	---	---------------------------------------	------------------------------------	---------------------------------



SE-2, 20 MAR 2025 to 17 APR 2025

SE-2, 20 MAR 2025 to 17 APR 2025

ELEV 32	D TDZE 28
---------	-----------



CATEGORY	A	B	C	D
LPV DA		228/40	200 (200-¾)	
LNAV/VNAV DA		434/60	406 (500-1½)	
LNAV MDA	500/55	472 (500-1)	500-1¾	472 (500-1¾)
CIRCLING	560-1	528 (600-1)	720-2 688 (700-2)	920-3 888 (900-3)