

APP CRS	Rwy Idg	6001
302°	TDZE	72
	Apt Elev	79

RNAV (GPS) RWY 30

DELAND MUNI-SIDNEY H TAYLOR FLD (DED)

RNP APCH.

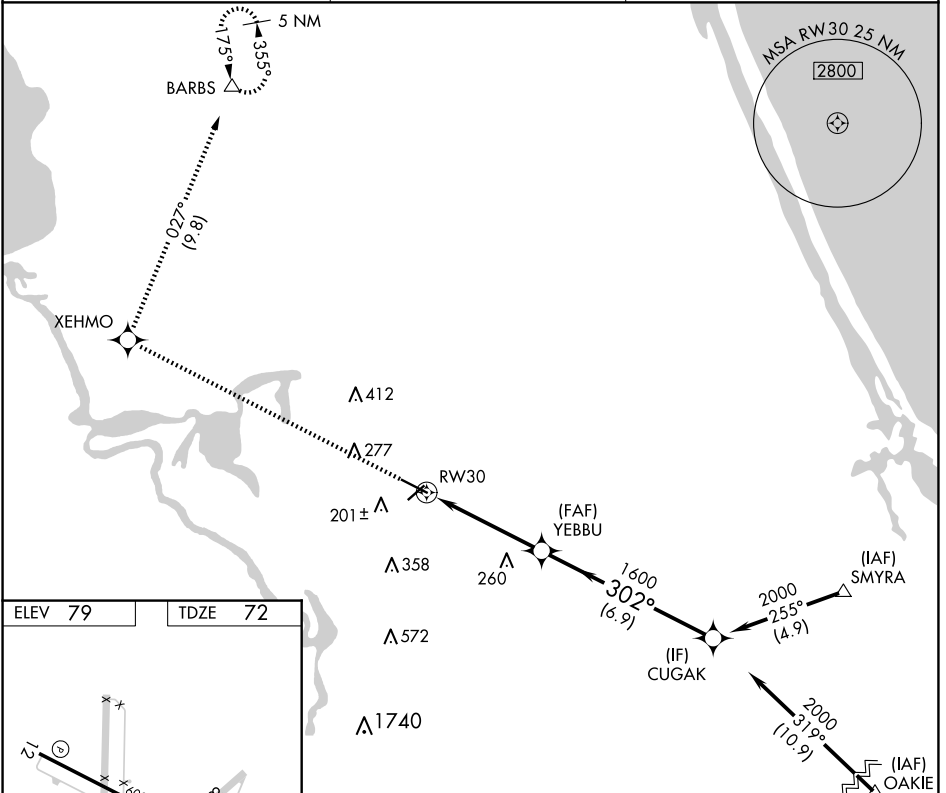
⚠ Rwy 30 helicopter visibility reduction below 3/4 SM NA. VDP NA when using Daytona Beach Intl altimeter setting. When local altimeter setting not received, use Daytona Beach Intl altimeter setting and increase all MDAs 40 feet.

MISSED APPROACH: Climb to 3000 direct XEHMO and right turn on track 027° direct BARBS and hold.

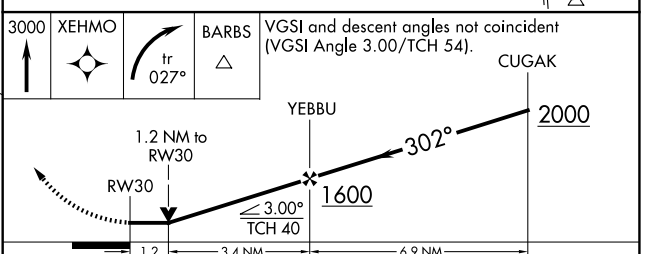
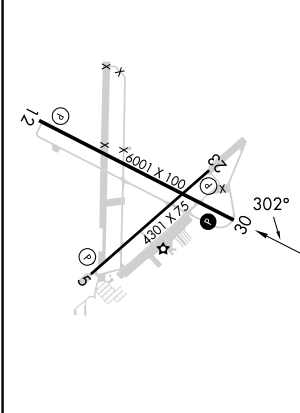
AWOS-3
119.575

DAYTONA APP CON
125.35 322.3

UNICOM
123.075 (CTAF) 0



ELEV 79	TDZE 72
---------	---------



HIRL Rwy 12-30 **1**
MIRL Rwy 5-23 **1**
REIL Rwy 12 and 30 **1**

CATEGORY	A	B	C	D
LNAV MDA	500-1	428 (500-1)	500-1¼	428 (500-1¼)

SE-3, 20 MAR 2025 to 17 APR 2025

SE-3, 20 MAR 2025 to 17 APR 2025