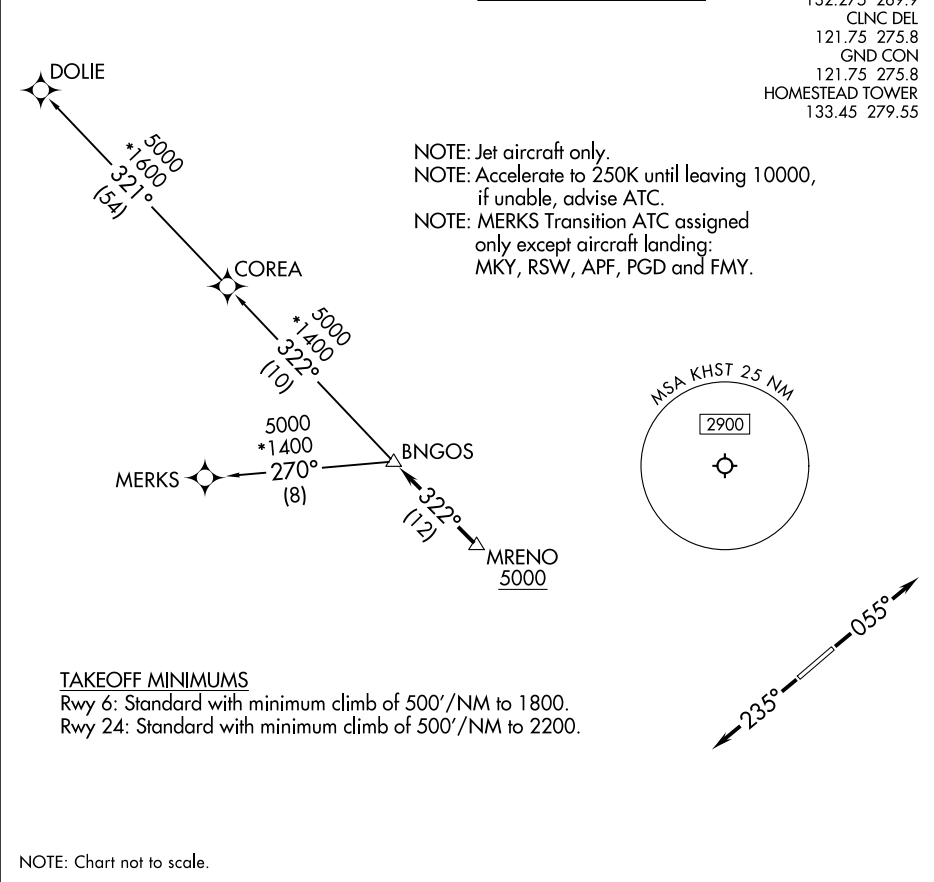


RNAV-1 DME/DME/IRU or GPS.	TOP ALTITUDE: ASSIGNED BY ATC	MIAMI DEP CON 125.5 354.1
RADAR required.		ATIS* 132.275 269.9 CLNC DEL 121.75 275.8 GND CON 121.75 275.8 HOMESTEAD TOWER 133.45 279.55



<div>▼</div> <div>DEPARTURE ROUTE DESCRIPTION</div> <div>TAKEOFF RUNWAY 6: Climb on heading 055° or as assigned by ATC for RADAR vectors to cross MRENO at or above 5000, thence. . . TAKEOFF RUNWAY 24: Climb on heading 235° or as assigned by ATC for RADAR vectors to cross MRENO at or above 5000, thence. . .  ...on track 322° to BNGOS, then on assigned transition, maintain ATC assigned altitude, expect filed altitude within 10 minutes after departure.  COREA TRANSITION (BNGOS4.COREA) DOLIE TRANSITION (BNGOS4.DOLIE) MERKS TRANSITION (BNGOS4.MERKS)</div>
--

SE-3, 20 MAR 2025 to 17 APR 2025

SE-3, 20 MAR 2025 to 17 APR 2025