

# HI-TACAN Z RWY 23L

VORTAC EDW 116.4 Chan 111	APCH CRS 226°	Rwy Idg TDZE 15,024 2286 Arprt Elev 2311
---------------------------------	------------------	--

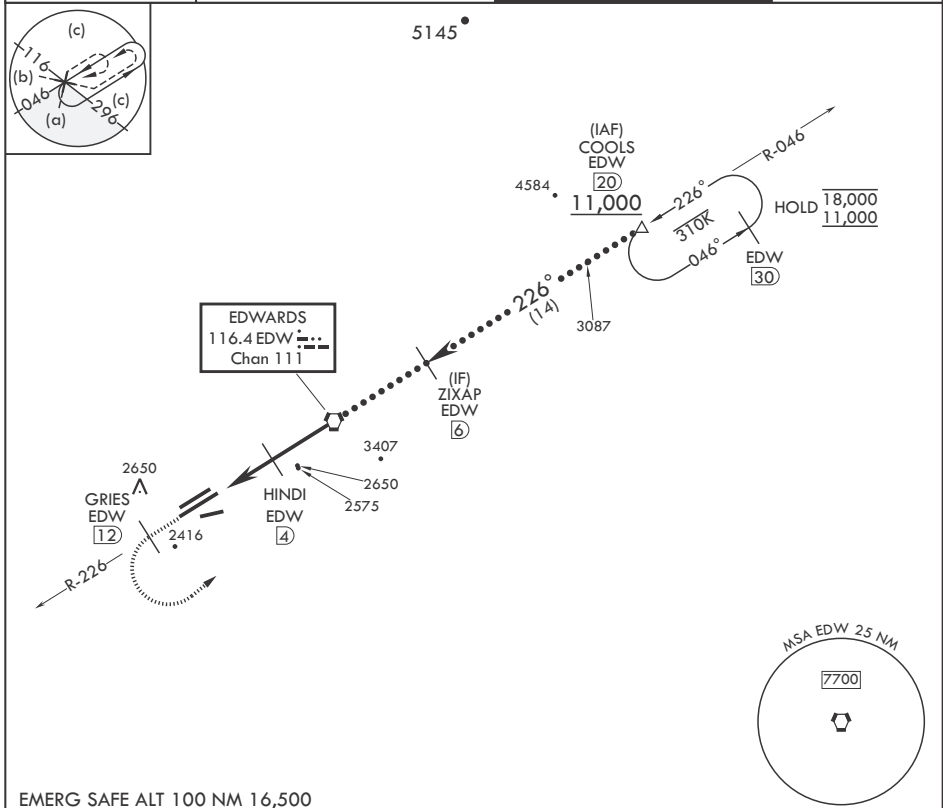
(USAF)

EDWARDS AFB (KEDW)

**V** \* Circling NA NW of Rwy 5L-23R. Circling not authorized at night to Rwy 5L-23R.

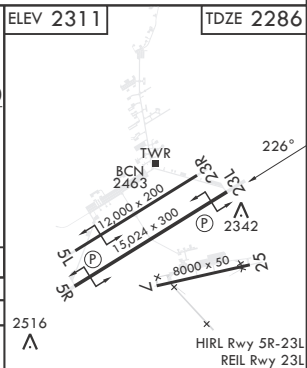
**MISSED APPROACH:** Climb to 11,000. Track EDW VORTAC R-226 outbound to GRIES, then turn left direct COOLS and hold. Missed Approach requires use of RNAV or ATC RADAR monitoring.

ATIS * 127.425 269.9	JOSHUA APP CON/DEP CON 133.65 348.7	TOWER * 120.7 (CTAF) 318.1 (CTAF)	GND CON 121.8 225.4
-------------------------	--	--------------------------------------	------------------------



EMERG SAFE ALT 100 NM 16,500

11,000 EDW R-226	GRIES EDW (12)	COOLS EDW (20)	VGSi and descent angles not coincident (VGSi Angle 3.00/TCH 49).		COOLS EDW (20)
HUBNO (7)		HINDI (4)	VORTAC	ZIXAP (6)	11,000
3300		4500	5900	226°	
.5		3 NM	4 NM	≤ 2.71° TCH 49	
CATEGORY	C	D	E		
S-23L	2640-1	354	(400-1)		
<b>C</b> CIRCLING*	2880-1½ 569 (600-1½)	2880-2	569 (600-2)		



# HI-TACAN Z RWY 23L

SW-3, 20 MAR 2025 to 17 APR 2025

SW-3, 20 MAR 2025 to 17 APR 2025