

EDWARDS, CALIFORNIA

# ILS or LOC/DME Y RWY 23L

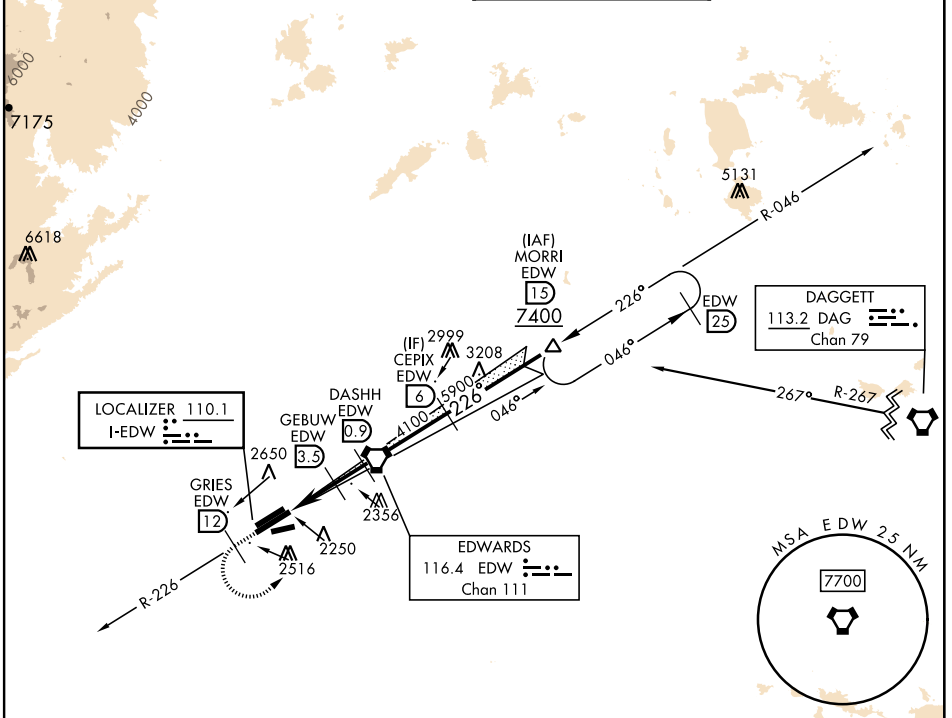
LOC I-EDW <b>110.1</b>	APCH CRS <b>226°</b>	Rwy Ldg <b>15,024</b> TDZE <b>2286</b> Arprt Elev <b>2311</b>
---------------------------	-------------------------	---------------------------------------------------------------------

[USAF]

EDWARDS AFB (KEDW)

▼ \*Circling not authorized NW of Rwy 5L-23R.  
 Circling not authorized at night to Rwy 5L-23R.  
 MISSED APPROACH: Climb to 7400. Track EDW R-226 outbound to GRIES, then turn left direct MORRI and hold.  
 Missed approach requires use of RNAV or ATC RADAR monitoring.

ATIS ★ <b>127.425 269.9</b>	JOSHUA APP/DEP CON <b>133.65 348.7</b>	TOWER ★ <b>120.7 (CTAF) 318.1 (CTAF)</b>	GND CON <b>121.8 225.4</b>
--------------------------------	-------------------------------------------	---------------------------------------------	-------------------------------



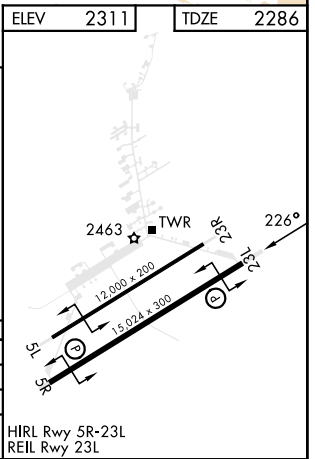
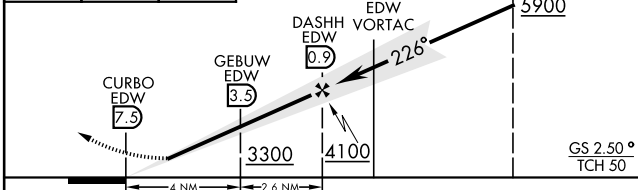
SW-3, 20 MAR 2025 to 17 APR 2025

SW-3, 20 MAR 2025 to 17 APR 2025

ELEV	2311	TDZE	2286
------	------	------	------

EMERG SAFE ALT 100 NM 16,500

7400 EDW R-226	GRIES EDW (12)	VGSI and ILS glidepath not coincident (VGSI Angle 3.00/TCH 49).	CEPIX EDW (6)
----------------	----------------	-----------------------------------------------------------------	---------------



CATEGORY	A	B	C	D	E
S-ILS 23L		2486-3/4	200	(200-3/4)	
S-LOC 23L		2540-1	254	(300-1)	
CIRCLING*	2880-1	569 (600-1)	2880-1 1/2 569 (600-1 1/2)	2880-2	569 (600-2)

EDWARDS, CALIFORNIA 34° 54' N - 117° 53' W EDWARDS AFB (KEDW)

Amtd 2 23APR20

# ILS or LOC/DME Y RWY 23L