

RNAV (GPS) RWY 5R

APCH CRS **046°**
 Rwy Idg **15,024**
 TDZE **2303**
 Arpt Elev **2311**

-(USAF)

EDWARDS AFB (KEDW)

▽ * Circling not authorized NW of Rwy 5L-23R.

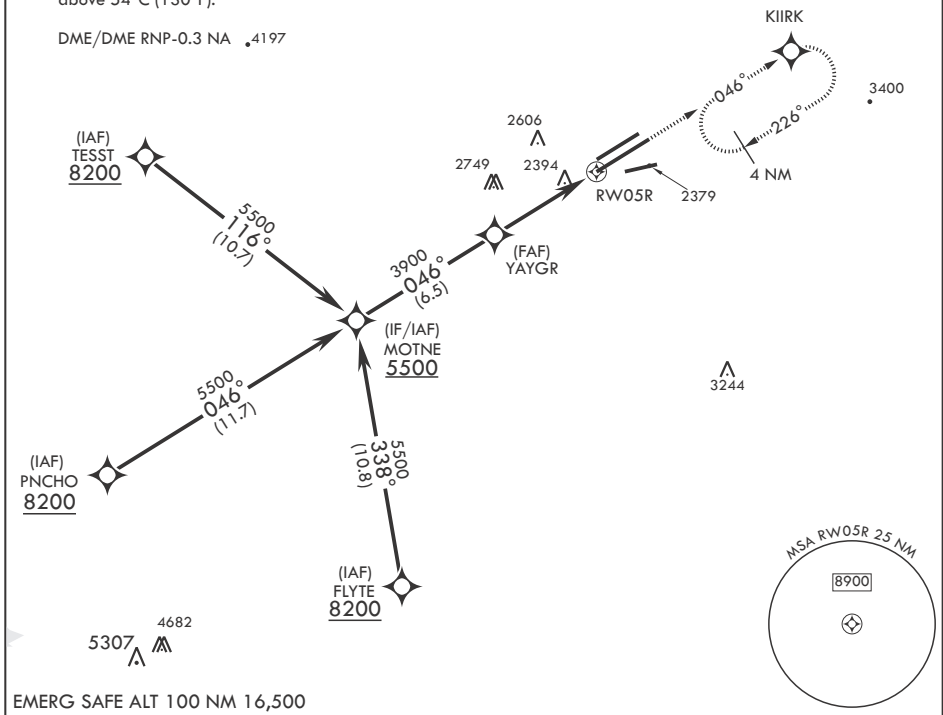
MISSED APPROACH: Climb to 5700 direct KIIRK and hold, continue climb-in-hold to 5700.

ATIS* 127.425 269.9	JOSHUA APP CON/DEP CON 133.65 348.7	TOWER* 120.7 (CTAF) 318.1 (CTAF)	GND CON 121.8 225.4
-------------------------------	---	--	-------------------------------

For uncompensated Baro VNAV systems, procedure NA below -19°C (-2°F) or above 54°C (130°F).

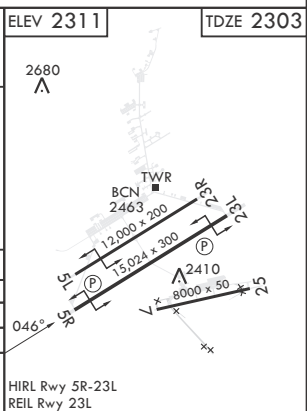
5296

DME/DME RNP-0.3 NA 4197



EMERG SAFE ALT 100 NM 16,500

MOTNE	VGSi and descent angles not coincident.					5700	KIIRK	ELEV 2311	TDZE 2303
5500	046°					3900	YAYGR	1.5 NM to RWY 5R	4.8 NM
GP 3.00°						TCH 50			
CATEGORY	A	B	C	D	E				
LNAV/VNAV DA	2820-1 ³ / ₈		517	(600-1 ³ / ₈)					
LNAV MDA	2820-1	517 (600-1)	2820-1 ³ / ₈	517	(600-1 ³ / ₈)				
C CIRCLING*	2880-1	569 (600-1)	2880-1 ¹ / ₂	569	(600-1 ¹ / ₂)	2880-2	569	(600-2)	



RNAV (GPS) RWY 5R

SW-3, 20 MAR 2025 to 17 APR 2025

SW-3, 20 MAR 2025 to 17 APR 2025