

EDWARDS, CALIFORNIA

VOR/DME or TACAN Y RWY 5R

[USAF]

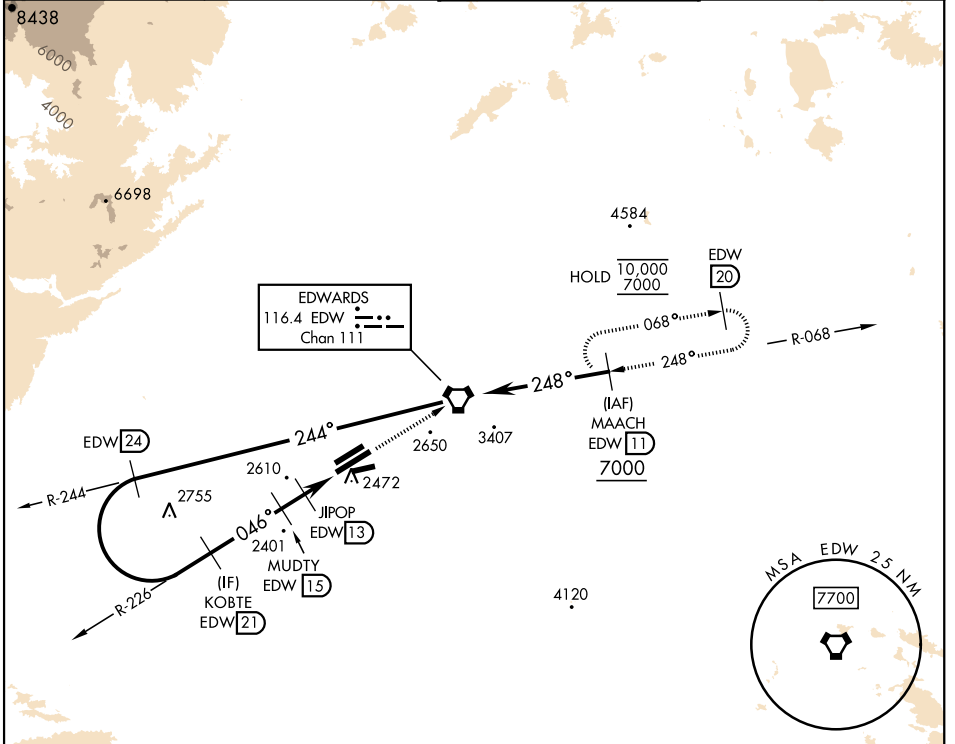
EDWARDS AFB (KEDW)

VORTAC EDW 116.4 Chan 111	APCH CRS 046°	Rwy ldg 15,024 TDZE 2303 Arprt Elev 2311
-----------------------------------------------	-------------------------	---------------------------------------------------------------------

⚠ *Circling not authorized NW of Rwy 5L-23R.
 Circling not authorized at night to Rwy 5L-23R.

MISSED APPROACH: Track EDW VORTAC R-226 to EDW.
 Intercept EDW R-068 to MAACH and hold. Maintain 7000.
 Missed approach requires use of RNAV or ATC radar monitoring.

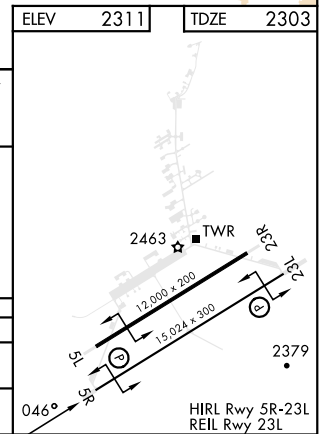
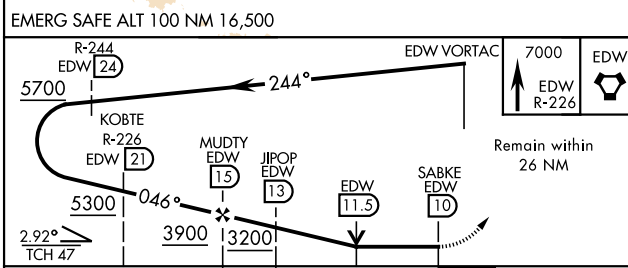
ATIS ★ 127.425 269.9	JOSHUA APP/DEP CON 133.65 348.7	TOWER ★ 120.7 (CTAF) 318.1 (CTAF)	GND CON 121.8 225.4
--------------------------------	-------------------------------------------	----------------------------------------------------	-------------------------------



SW-3, 20 MAR 2025 to 17 APR 2025

SW-3, 20 MAR 2025 to 17 APR 2025

ELEV	2311	TDZE	2303
------	------	------	------



CATEGORY	A	B	C	D	E
S-5R	2820-1 517 (600-1)		2820-1½ 517	517	(600-1½)
CIRCLING*	2880-1 569 (600-1)		2880-1½ 569 (600-1½)	2880-2	569 (600-2)

EDWARDS, CALIFORNIA
Amdt 3 23APR20

34°54'N-117°53'W

EDWARDS AFB (KEDW)

VOR/DME or TACAN Y RWY 5R