

WAAS CH 49122 W32A	APP CRS 323°	Rwy Idg TDZE Apt Elev	5056 716 716
--	------------------------	-----------------------------	---

RNAV (GPS) RWY 32

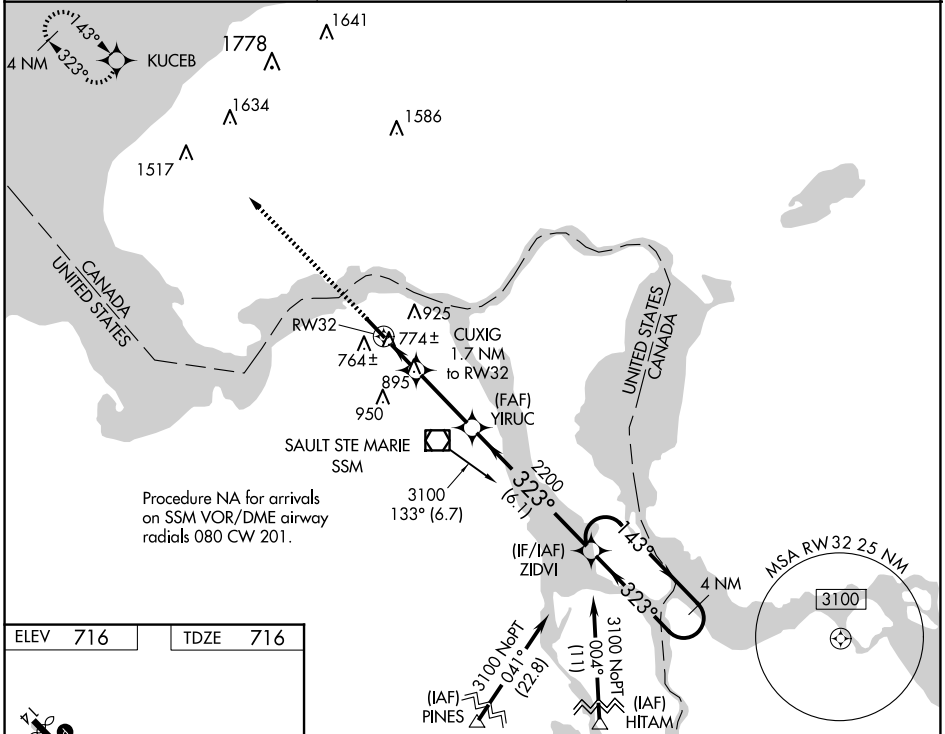
SAULT STE MARIE MUNI/SANDERSON FLD (A.N.J)

RNP APCH.

⚠ Rwy 32 helicopter visibility reduction below 3/4 SM NA. When local altimeter setting not received, use Chippewa County Intl altimeter setting and increase all MDA 60 feet, and increase LP Cat C visibility 1/8 mile and LNAV Cat C visibility 1/4 mile.

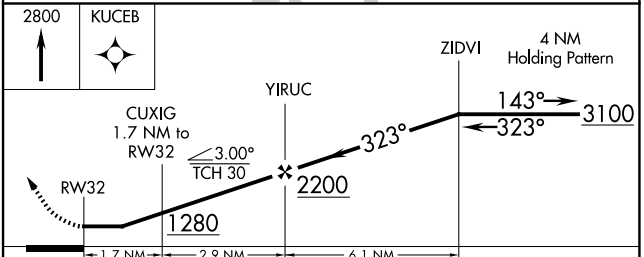
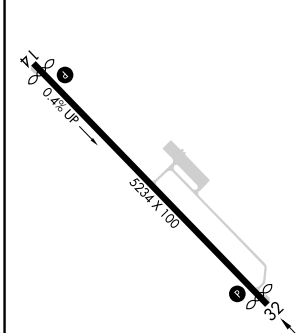
MISSED APPROACH: Climb to 2800 direct KUCEB and hold.

ASOS 118.375	TORONTO CENTER 132.65 344.5	UNICOM 122.7 (CTAF)
------------------------	---------------------------------------	-------------------------------



Procedure NA for arrivals on SSM VOR/DME airway radials 080 CW 201.

ELEV 716	TDZE 716
----------	----------



CATEGORY	A	B	C	D
LP MDA	1040-1 324 (400-1)			NA
LNAV MDA	1200-1	484 (500-1)	1200-1 3/8 484 (500-1 3/8)	NA
CIRCLING	1280-1	564 (600-1)	1320-1 3/4 604 (700-1 3/4)	NA

EC-1, 20 MAR 2025 to 17 APR 2025

EC-1, 20 MAR 2025 to 17 APR 2025