

APP CRS <b>245°</b>	Rwy Idg N/A
	TDZE N/A
	Apt Elev <b>7680</b>

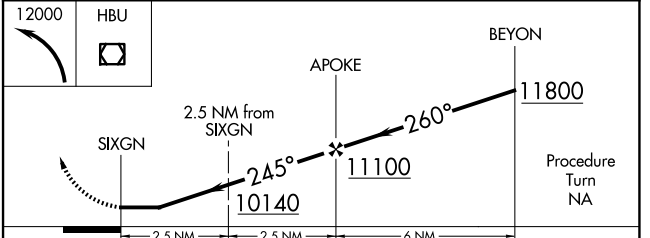
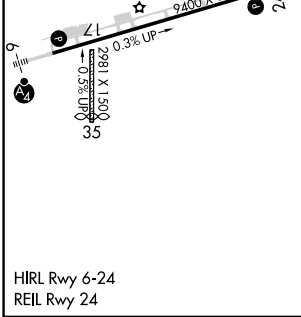
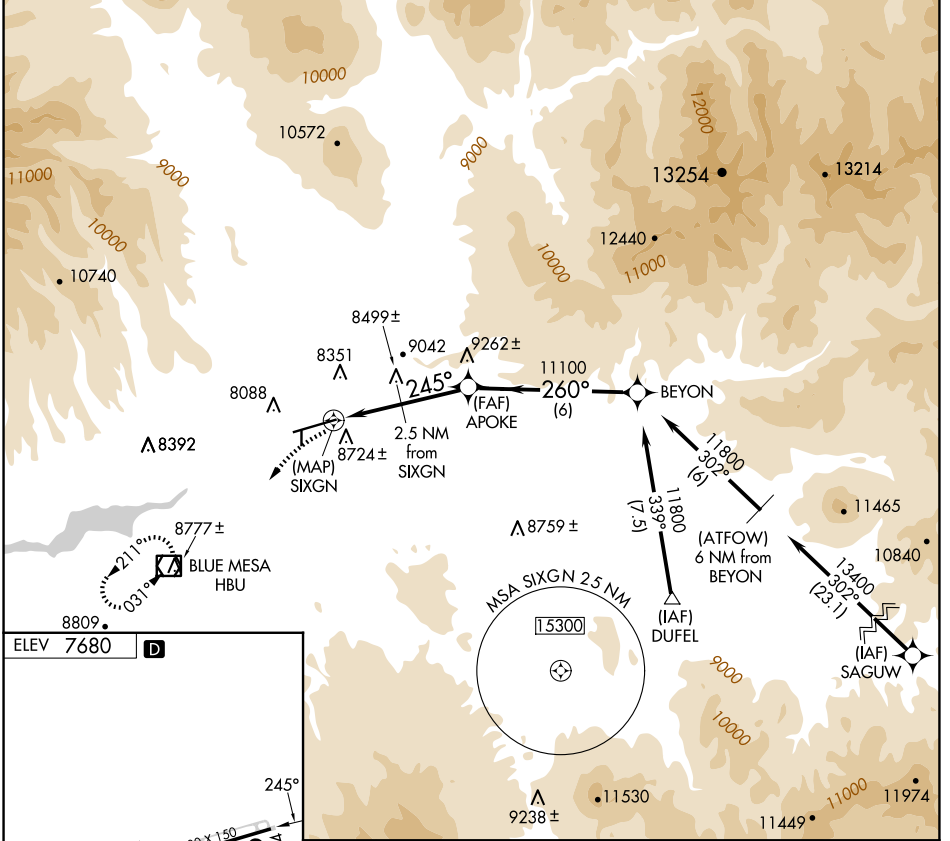
# GPS-B

## GUNNISON-CRESTED BUTTE RGNL (GUC)

Procedure not authorized when airport closed except by prior arrangement. DME/DME RNP-0.3 NA.  
 Circling NA to Rwy 17 and 35.

MISSED APPROACH: Climbing left turn to 12000 direct HBU VOR/DME and hold.

AWOS-3PT <b>135.075</b>	DENVER CENTER <b>124.5 350.25</b>	UNICOM <b>122.7 (CTAF)</b>
----------------------------	--------------------------------------	-------------------------------



CATEGORY	A	B	C	D
CIRCLING	9180-1¼ 1500 (1500-1¼)	9180-1½ 1500 (1500-1½)	9540-3 1860 (1900-3)	10040-3 2360 (2400-3)

# GPS-B

SW-1, 20 MAR 2025 to 17 APR 2025

SW-1, 20 MAR 2025 to 17 APR 2025