

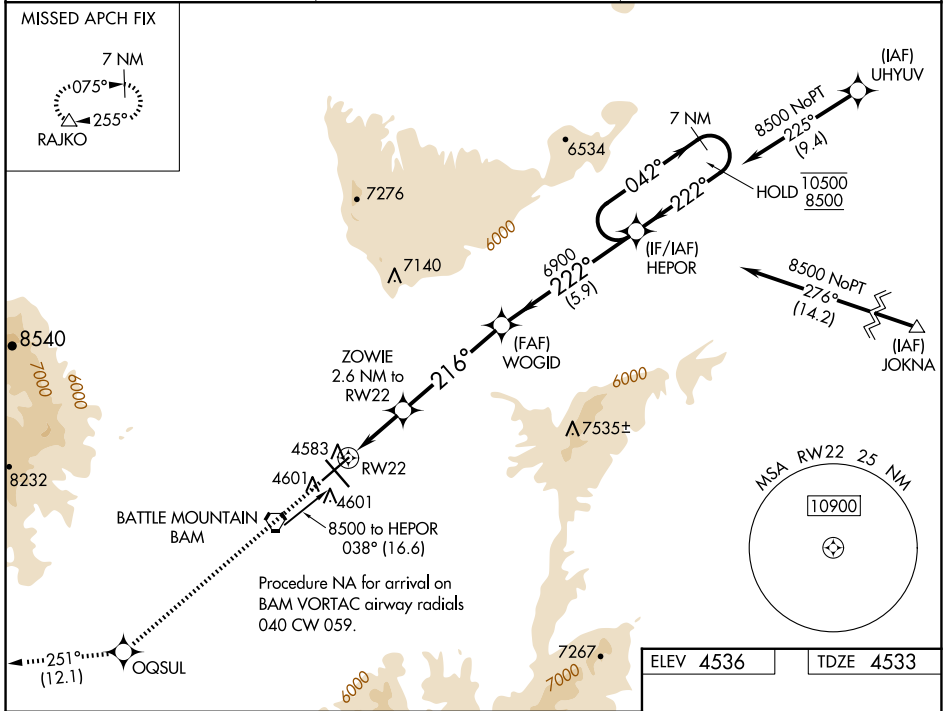
WAAS CH 82741 W22A	APP CRS 216°	Rwy Idg 7300 TDZE 4533 Apt Elev 4536
--	------------------------	---

RNAV (GPS) RWY 22

BATTLE MOUNTAIN (BAM)

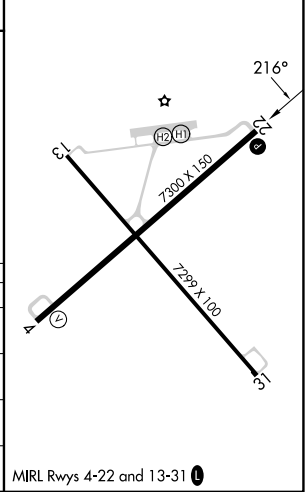
RNP APCH. Baro-VNAV NA.	MISSED APPROACH: Climb to 11900 direct OQSUL and track 251° to RAJKO and hold, continue climb-in-hold to 11900.
----------------------------	---

AWOS-3 119.45	SALT LAKE CITY CENTER 132.25 338.35	UNICOM 122.8 (CTAF) 📶
-------------------------	---	--



11900 OQSUL	RAJKO	VGSI and RNAV glidepath not coincident (VGSI Angle 3.00/TCH 45).	7 NM Holding Pattern
↑ 251°	△		
*LNAV only.			
*0.8 NM to RWY 22			
ZOWIE 2.6 NM to RWY 22			
5400*			
0.8 NM		1.8 NM	4.7 NM
RWY 22		WOGID 6900	HEPOR 10500/8500
		222°	042°
		216°	222°
		6900	10500/8500
			GP 3.00° TCH 51

ELEV 4536	TDZE 4533
-----------	-----------



CATEGORY	A	B	C	D
LPV DA		4753-1	220 (300-1)	
LNAV/VNAV DA		4808-1	275 (300-1)	
LNAV MDA	4980-1	447 (500-1)	4980-1 ³ / ₈	447 (500-1 ³ / ₈)
📶 CIRCLING	4980-1 444 (500-1)	5000-1 464 (500-1)	5000-1 ¹ / ₂ 464 (500-1 ¹ / ₂)	5460-3 924 (1000-3)

MIRL Rwy 4-22 and 13-31 **📶**

SW-4, 20 MAR 2025 to 17 APR 2025

SW-4, 20 MAR 2025 to 17 APR 2025