

# HI-TACAN RWY 14

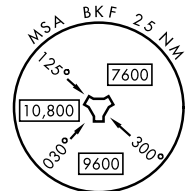
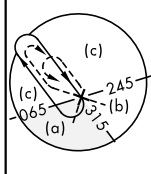
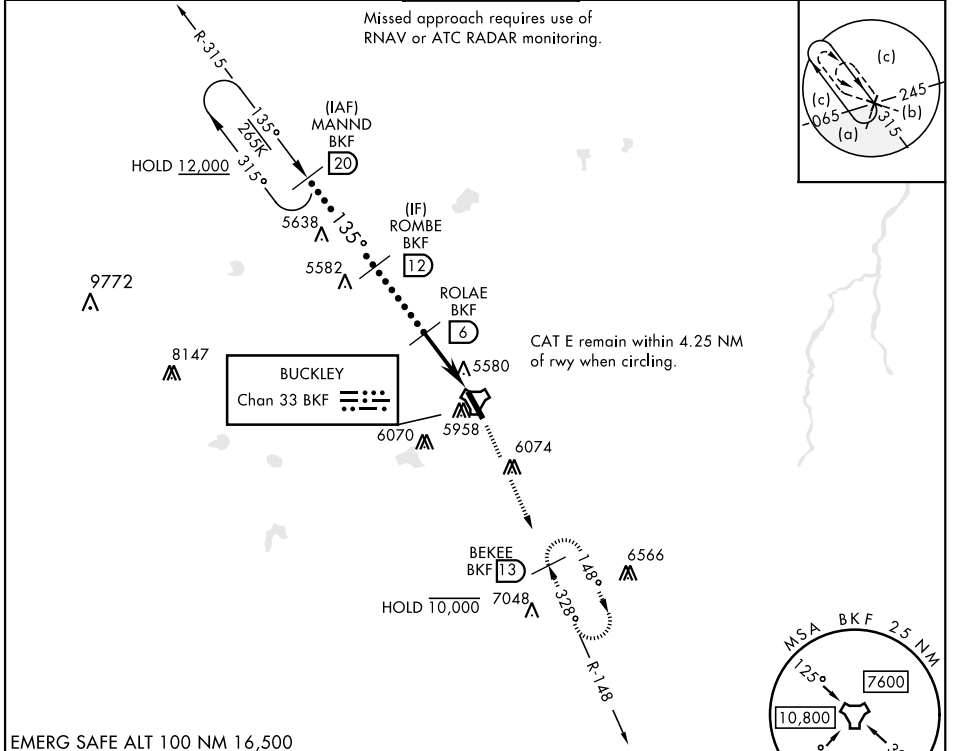
TACAN BKF Chan <b>33</b>	APCH CRS <b>135°</b>	Rwy Idg <b>11,006</b> TDZE <b>5592</b> Arprt Elev <b>5663</b>
-----------------------------	-------------------------	---

AL-538 [USAF]

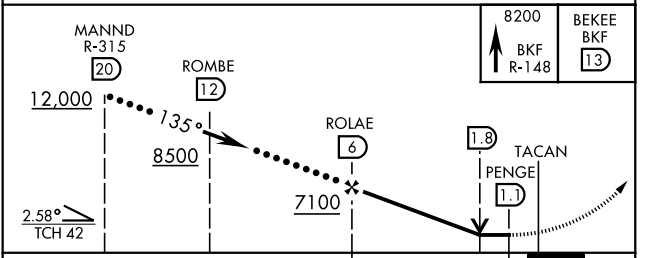
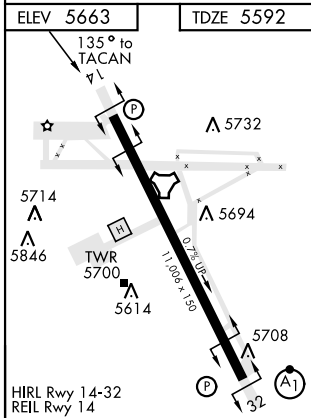
BUCKLEY SFB (KBKF)

\* Circling NA East of Rwy 14-32. MISSED APPROACH: Climb to 8200 on BKF TACAN R-148 to BEKEE and hold or as directed by ATC.

ATIS ★ <b>119.675 259.3</b>	DENVER APP CON <b>128.45 251.075</b>	TOWER ★ <b>121.0 291.675</b>	GND CON <b>121.6 275.8</b>	CLNC DEL <b>121.6 275.8</b>
--------------------------------	---	---------------------------------	-------------------------------	--------------------------------



EMERG SAFE ALT 100 NM 16,500



CATEGORY	C	D	E
S-14	5940-1	348 (300-1)	
CIRCLING*	6360-2 697 (700-2)	6400-2¼ 737 (800-2¼)	6420-2¾ 757 (800-2¾)

# HI-TACAN RWY 14

SW-1, 20 MAR 2025 to 17 APR 2025

SW-1, 20 MAR 2025 to 17 APR 2025