

APP CRS	Rwy Idg	6857
130°	TDZE	451
	Apt Elev	476

RNAV (RNP) Z RWY 13R

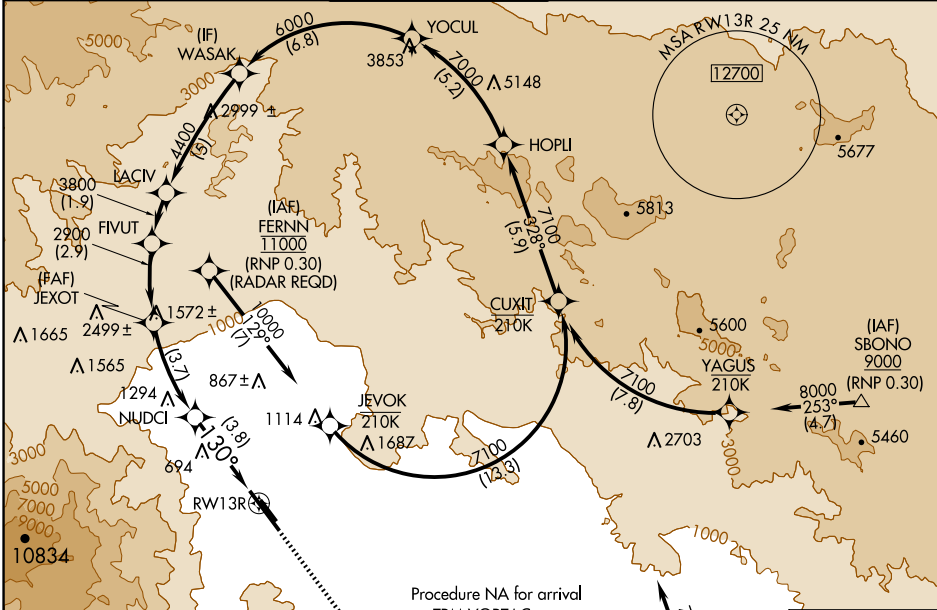
PALM SPRINGS INTL (PSP)

RNP AR APCH, RF required.

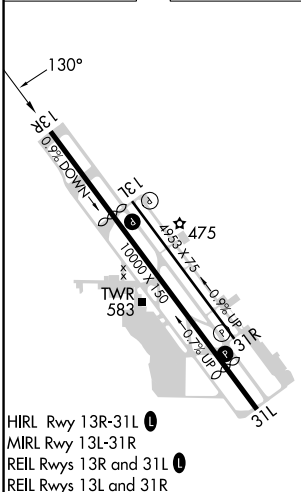
▽ For uncompensated Baro-VNAV systems, procedure NA below 1°C or above 54°C.

MISSED APPROACH: Climb to 900 then climbing left turn to 4000 direct TRM VORTAC and hold.

ATIS	SOCAL APP CON	PALM SPRINGS TOWER*	GND CON	CLNC DEL	UNICOM
124.65	126.7 370.95 135.275 251.1	119.7 (CTAF) 0 377.05	121.9	128.35	122.95



ELEV 476	D	TDZE 451
----------	----------	----------



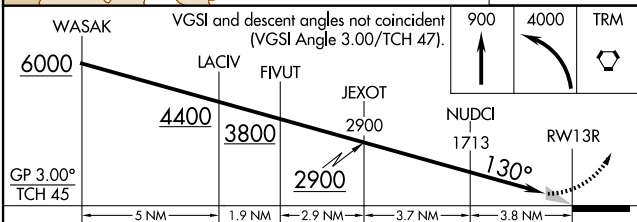
HIRL Rwy 13R-31L **①**
 MIRL Rwy 13L-31R
 REIL Rwy 13R and 31L **①**
 REIL Rwy 13L and 31R

Procedure NA for arrival on TRM VORTAC airway radials 263 CW 021.

(IAF) THERMAL TRM 9000 (RNP 0.30)

MISSED APCH FIX

THERMAL TRM 130° 4 NM



CATEGORY	A	B	C	D
RNP 0.17 DA		812-1¼	361 (400-1¼)	
RNP 0.30 DA		882-1½	431 (500-1½)	

AUTHORIZATION REQUIRED

SW-3, 20 MAR 2025 to 17 APR 2025

SW-3, 20 MAR 2025 to 17 APR 2025