

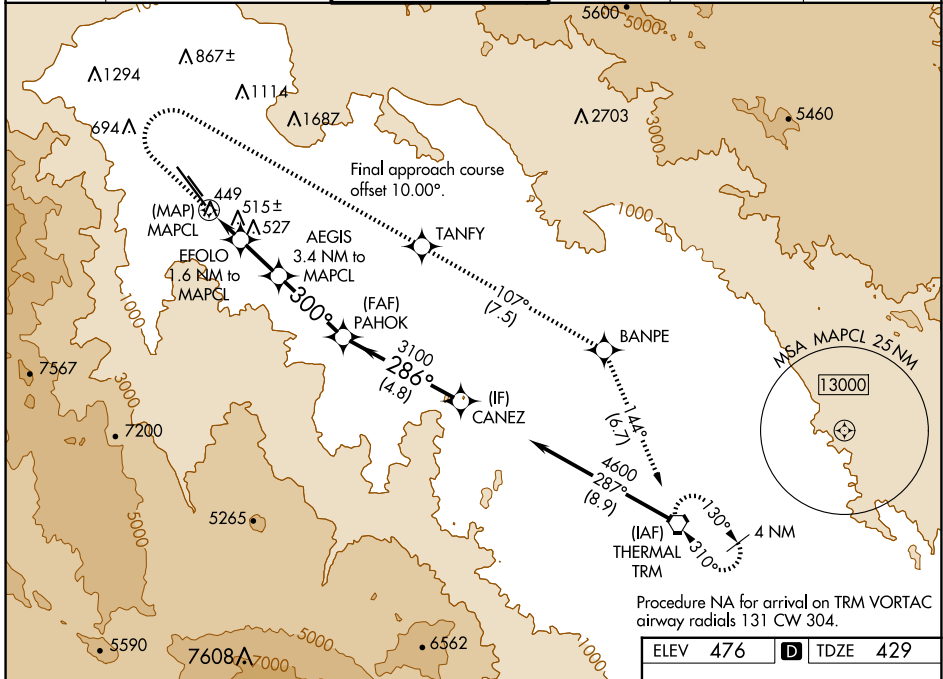
WAAS CH 50244 W31A	APP CRS 300°	Rwy Idg TDZE Apt Elev	8500 429 476
--	------------------------	-----------------------------	---

RNAV (GPS) Z RWY 31L

PALM SPRINGS INTL (PSP)

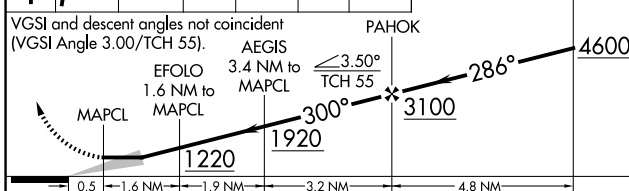
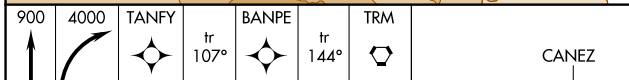
RNP APCH-GPS.		MISSED APPROACH: Climb to 900 then climbing right turn to 4000 direct TANFY and track 107° to BANPE and track 144° to TRM VORTAC and hold. *Missed approach requires minimum climb of 355 feet per NM to 2100.			
Circling NA southwest of Rwy 13R-31L.					

ATIS 124.65	SOCAL APP CON 126.7 370.95 135.275 251.1	PALM SPRINGS TOWER * 119.7 (CTAF) 0 377.05	GND CON 121.9	CLNC DEL 128.35	UNICOM 122.95
-----------------------	--	--	-------------------------	---------------------------	-------------------------

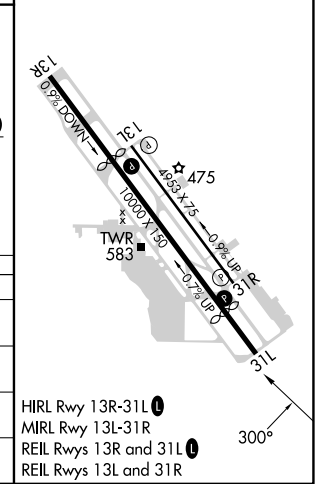


Procedure NA for arrival on TRM VORTAC airway radials 131 CW 304.

ELEV 476	D TDZE 429
----------	-------------------



CATEGORY	A	B	C	D
LP MDA	700-1 271 (300-1)	780-1 351 (400-1)	1320-2½	891 (900-2½)
LNAV MDA*	780-1 351 (400-1)			
LNAV MDA	920-1 491 (500-1)	1180-1¼ 751 (800-1¼)	1440-3	1011 (1000-3)
C CIRCLING	920-1 444 (500-1)	1180-1¼ 704 (800-1¼)	1440-3 964 (1000-3)	1760-3 1284 (1300-3)



SW-3, 20 MAR 2025 to 17 APR 2025

SW-3, 20 MAR 2025 to 17 APR 2025