

VORTAC ONM <b>116.8</b> Chan <b>115</b>	APP CRS <b>179°</b>	Rwy Idg TDZE Apt Elev <b>N/A</b> <b>N/A</b> <b>4875</b>
-----------------------------------------------	------------------------	------------------------------------------------------------------------

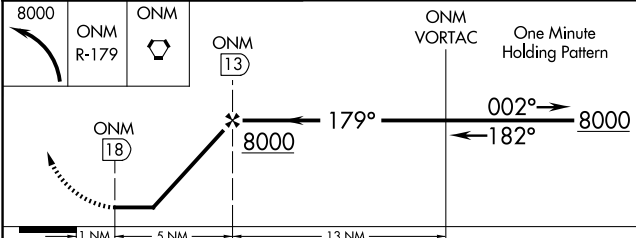
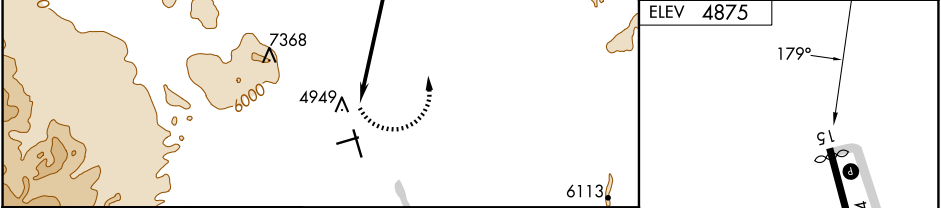
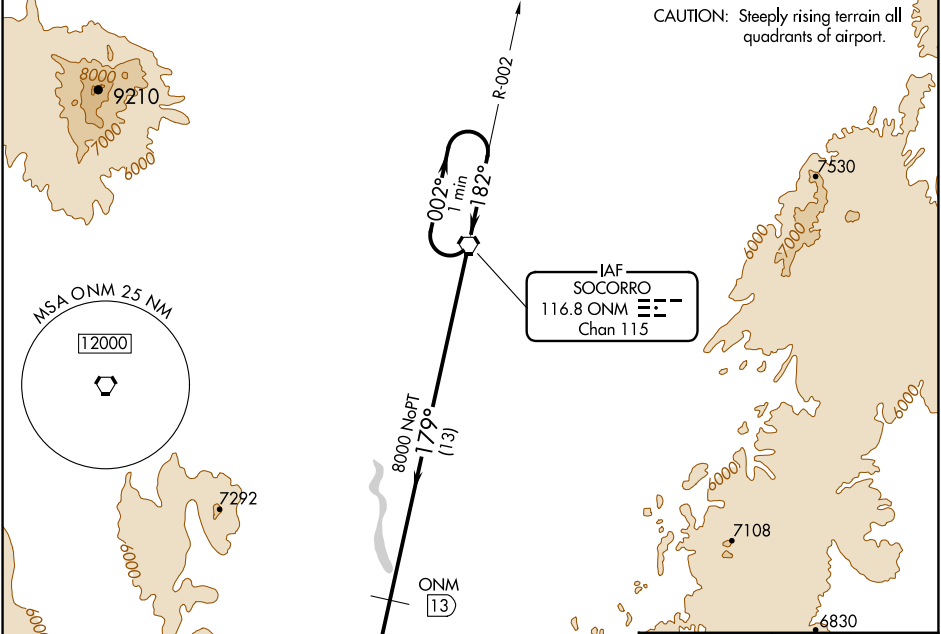
# VOR/DME-A

SOCORRO MUNI (ONM)

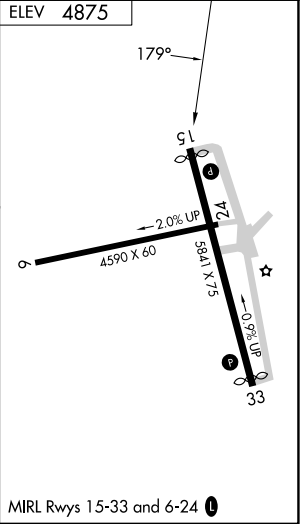
**⚠ NA** When local altimeter not available, procedure not authorized.  
Circling not authorized west of Rwy 15-33.  
If arrival over Socorro VOR is above 8000 descend in the holding pattern to 8000 before commencing approach.

MISSED APPROACH: Climbing left turn to 8000 intercept ONM R-179 direct to ONM VORTAC and hold.

AWOS-3 <b>118.325</b>	ALBUQUERQUE CENTER <b>124.325 288.25</b>	UNICOM <b>122.8 (CTAF) 0</b>
--------------------------	---------------------------------------------	---------------------------------



CATEGORY	A	B	C	D
CIRCLING	6540-1¼ 1665 (1700-1¼)	6540-1½ 1665 (1700-1½)	6540-3 1665 (1700-3)	NA



SW-1, 20 MAR 2025 to 17 APR 2025

SW-1, 20 MAR 2025 to 17 APR 2025

MIRL Rwy 15-33 and 6-24 0