

HARYS FIVE DEPARTURE (RNAV)

AL-552 (FAA)

VAN NUYS (VNY)
VAN NUYS, CALIFORNIA

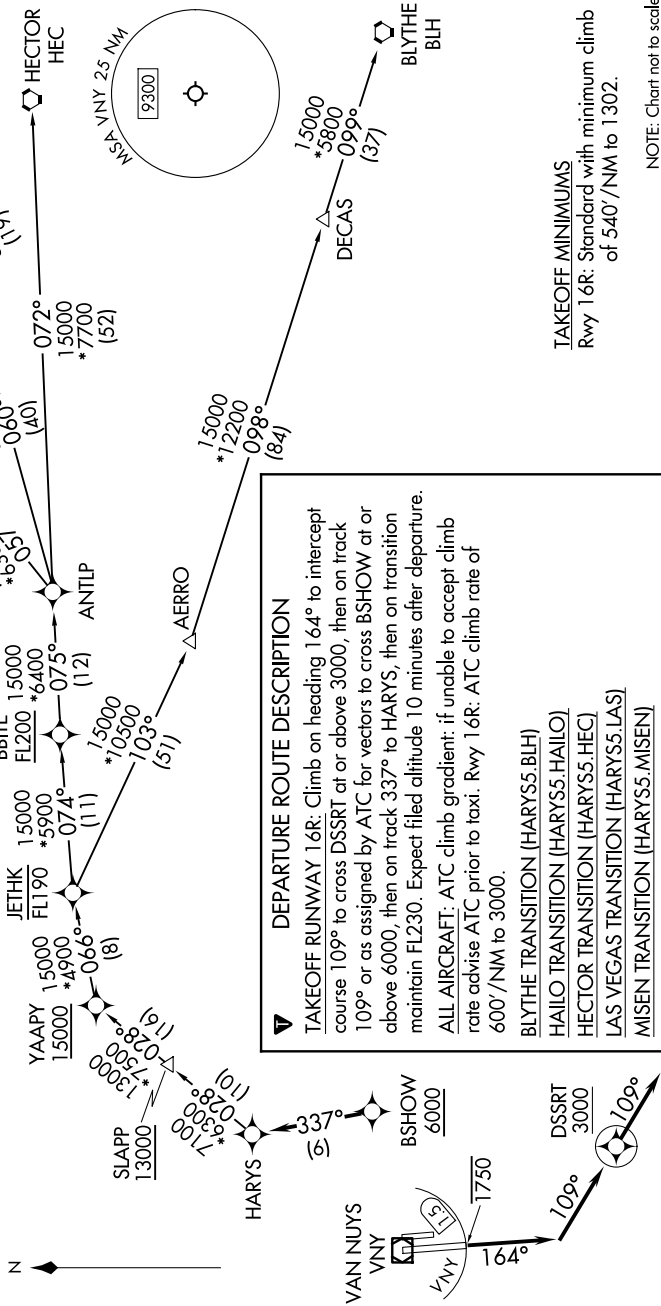
SW-3, 20 MAR 2025 to 17 APR 2025

SOCAL DEP CON
124.6 298.85
ATIS
127.55
CLNC DEL
126.6 239.0
GND CON
121.7
VAN NUYS TOWER*
119.3 239.0

RNAV 1 - DME/DME/IRU or GPS.
RADAR required.

TOP ALTITUDE:
FL230

NOTE: Turbojet and high performance turboprop aircraft only.
NOTE: MISEN transition restricted to aircraft landing LAS terminal area.
NOTE: Do not file HAILO transition - to be assigned by ATC.
NOTE: Cross DER/VNY VOR/DME 1.5 DME south of or below 1750.



NOTE: Chart not to scale.

SW-3, 20 MAR 2025 to 17 APR 2025