

LOC/DME I-CIC 111.3 Chan 50	APP CRS 131°	Rwy Idg TDZE 240 Apt Elev 240
--	------------------------	---

ILS or LOC RWY 13L

CHICO RGNL (CIC)

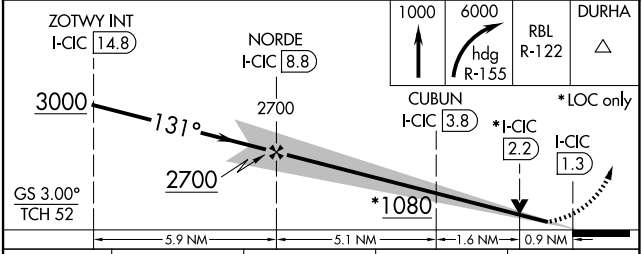
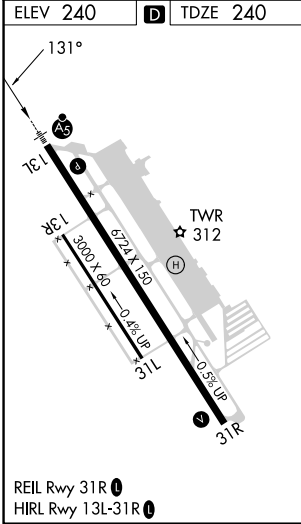
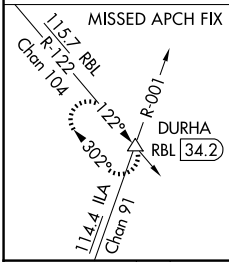
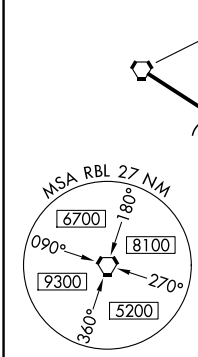
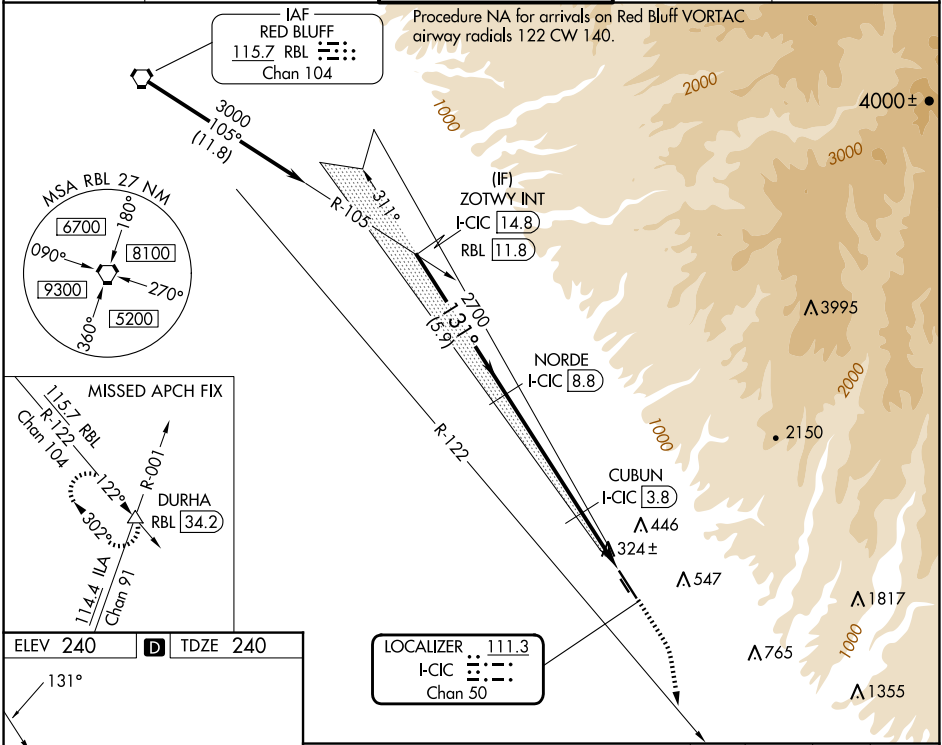
DME required.

⚠ Circling NA east of Rwy 13L/31R.

MALSR

MISSED APPROACH: Climb to 1000 then climbing right turn to 6000 on heading 155° and RBL R-122 to DURHA INT/ RBL 34.2 DME and hold, continue climb-in-hold to 6000.

ATIS 119.675	OAKLAND CENTER 132.2 350.3	CHICO TOWER ★ 121.0 (CTAF) 239.3	GND CON 121.9	UNICOM 122.95
------------------------	--------------------------------------	--	-------------------------	-------------------------



CATEGORY	A	B	C	D
S-ILS 13L		440-½	200 (200-½)	
S-LOC 13L		580-½	340 (400-½)	
C CIRCLING	640-1 400 (400-1)	700-1 460 (500-1)	700-1½ 460 (500-1½)	800-2 560 (600-2)

SW-2, 20 MAR 2025 to 17 APR 2025

SW-2, 20 MAR 2025 to 17 APR 2025