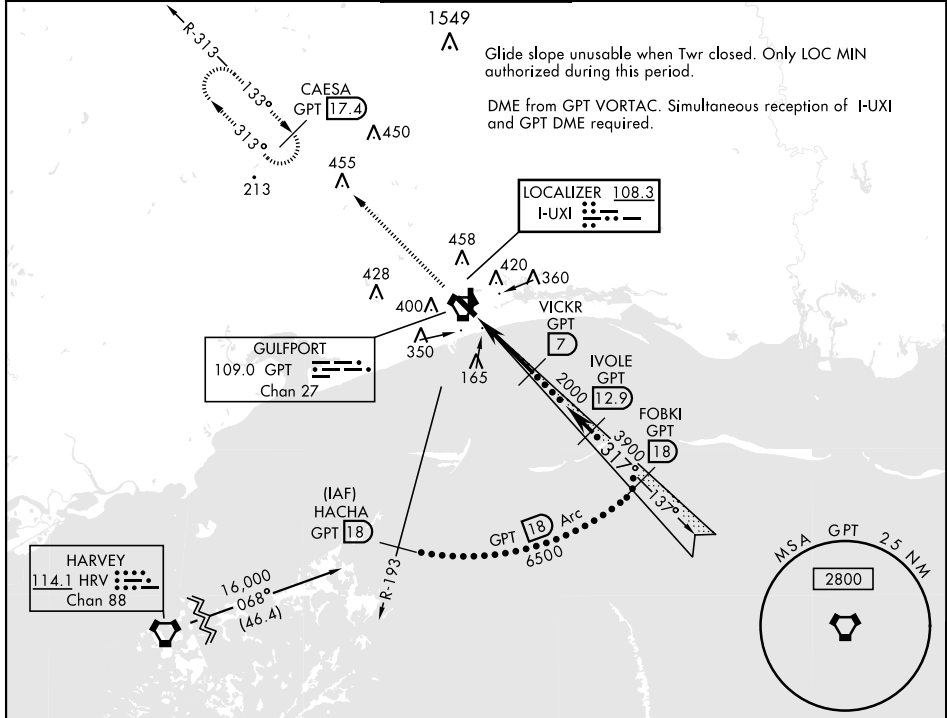


HI-ILS Y or LOC Y RWY 32

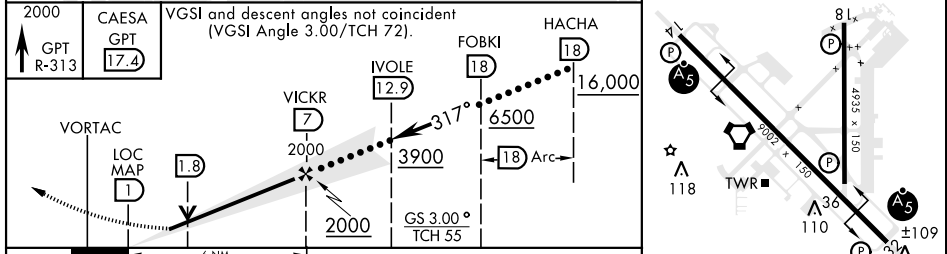
LOC I-UXI 108.3	APCH CRS 317°	Rwy Idg TDZE Arprt Elev 9002 27 28	AL-576 [USAF]	GULFPORT-BILOXI INTL (KGPT)
---------------------------	-------------------------	--	---------------	-----------------------------

RADAR or DME required.	<p>▼ * When ALS inop increase CAT E RVR 40, RVR 18 authorized with use of FD or AP or HUD to DA.</p> <p>▲ ** When ALS inop increase RVR 55.</p>		MISSED APPROACH: Climb to 2000 on GPT VORTAC R-313 to CAESA/GPT 17.4 DME and hold.
------------------------	---	--	--

ATIS ★ 119.45	GULFPORT APP CON 124.6 354.1 130°-309° 127.5 254.25 310°-129°	GULFPORT TOWER ★ 123.7 CTAF 0 339.8	GND CON 120.4 348.6	UNICOM 122.95	ASR
-------------------------	---	--	-------------------------------	-------------------------	-----



EMERG SAFE ALT 100 NM 3100	ELEV 28	TDZE 27
----------------------------	---------	---------



CATEGORY	C	D	E	
S-ILS 32 *	228/24	200	(200-½)	
S-LOC 32 **	380/30	352	(400-¾)	
CIRCLING	820-2 ¼ 791 (800-2 ¼)	820-2 ½ 791 (800-2 ½)	820-2 ¾ 791 (800-2 ¾)	HIRL Rwy 14-32 MRL Rwy 18-36

HI-ILS Y or LOC Y RWY 32

SC-4, 20 MAR 2025 to 17 APR 2025

SC-4, 20 MAR 2025 to 17 APR 2025