

HI-TACAN Y RWY 14

VORTAC GPT 109.0 Chan 27	APCH CRS 140°	Rwy Idg TDZE Arpt Elev 9002 27 28
--	-------------------------	---

[USAF]

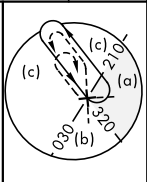
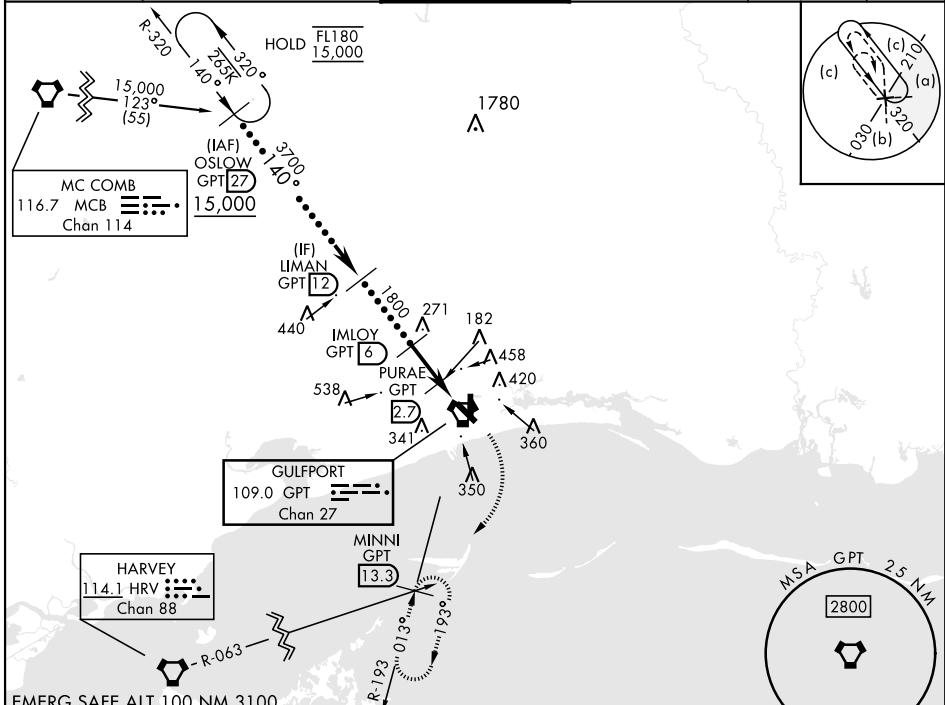
GULFPORT-BILOXI INTL (KGPT)

▽ * When ALS inop, increase RVR to 6000.
▲ ** When ALS inop, increase vis to 1 1/8 miles.



MISSED APPROACH: Climbing right turn to 3000 on GPT R-193 to MINNI/13.3 DME and hold.

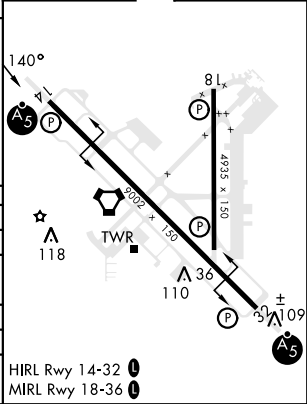
ATIS ★ 119.45	GULFPORT APP CON 124.6 354.1 130°-309° 127.5 254.25 310°-129°	GULFPORT TOWER ★ 123.7 CTAF 0 339.8	GND CON 120.4 348.6	UNICOM 122.95	ASR
-------------------------	---	--	-------------------------------	-------------------------	-----



EMERG SAFE ALT 100 NM 3100
 OSLOW GPT 27
 VGSI and ILS glidepath not coincident.
 15,000
 140°
 3700
 LIMAN GPT 12
 IMLOY GPT 6
 PURAE GPT 2.7
 1800
 680
 3000
 MINNI GPT 13.3
 GPT R-193
 TACAN
 MAFEF GPT 0.6
 5.4 NM

ELEV	28	TDZE	27
------	----	------	----

CATEGORY	C	D	E
S-14 *	440/40	413	(500-3/4)
CIRCLING	820-2 1/4 792 (800-2 1/4)	820-2 1/2 792 (800-2 1/2)	820-2 3/4 792 (800-2 3/4)
PASCAGOULA ALTIMETER MINIMUMS			
S-14 **	520/50	413	(500-1)
CIRCLING	900-2 1/2 792 (800-2 1/2)	900-2 3/4 792 (800-2 3/4)	900-3 792 (800-3)



HI-TACAN Y RWY 14

SC-4, 20 MAR 2025 to 17 APR 2025

SC-4, 20 MAR 2025 to 17 APR 2025