

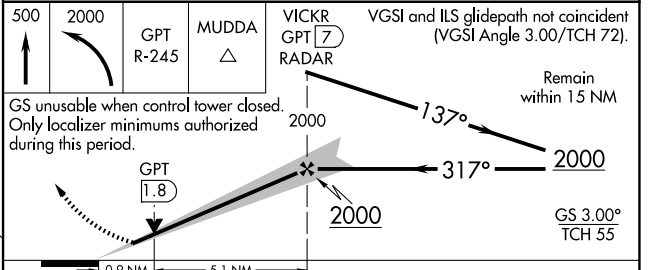
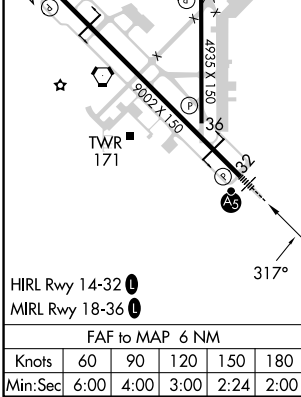
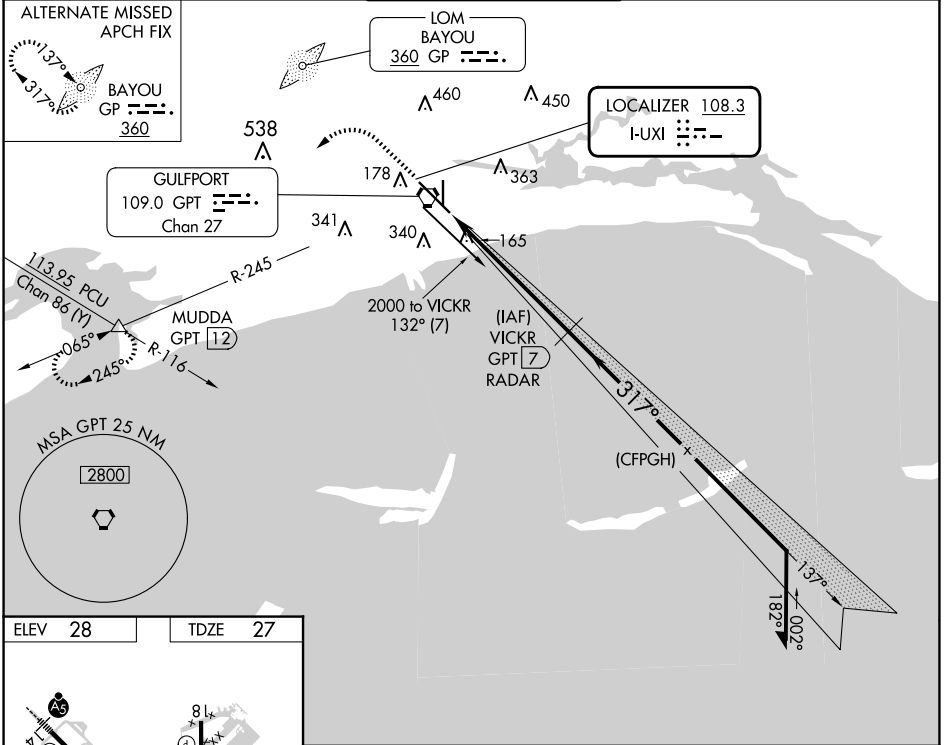
LOC I-UXI 108.3	APP CRS 317°	Rwy Idg TDZE 27 Apt Elev 28
---------------------------	------------------------	---

ILS Z or LOC Z RWY 32

GULFPORT-BILOXI INTL (GPT)

DME or RADAR required, except DME required when control tower closed.		MALSR 	MISSED APPROACH: Climb to 500 then climbing left turn to 2000 on GPT VORTAC R-245 to MUDDA INT/GPT 12 DME and hold.
<p> Rwy 32 helicopter visibility reduction below RVR 4000 NA. Inop table does not apply to S-ILS 32. DME from GPT VORTAC. Simultaneous reception of I-UXI and GPT DME required. For inop ALS, increase S-LOC 32 all Cats ASR visibility to RVR 5500.</p>			

ATIS 119.45	GULFPORT APP CON * 127.5 254.25	GULFPORT TOWER * 123.7 (CTAF) 0 339.8	GND CON 120.4 348.6	UNICOM 122.95
-----------------------	---	---	-------------------------------	-------------------------



500	2000	GPT R-245	MUDDA GPT 12	VICKR GPT 7 RADAR	VGSI and ILS glidepath not coincident (VGSI Angle 3.00/TCH 72).				
GS unusable when control tower closed. Only localizer minimums authorized during this period.					Remain within 15 NM				
GPT 1.8					2000				
0.9 NM					5.1 NM				
CATEGORY	A		B		C		D		E
S-ILS 32			277/40		250 (300-¾)				
S-LOC 32			380/40		353 (400-¾)				
<input checked="" type="checkbox"/> CIRCLING	520-1 492 (500-1)		640-1 612 (700-1)		760-2 732 (800-2)		760-2¼ 732 (800-2¼)		760-2½ 732 (800-2½)

SC-4, 20 MAR 2025 to 17 APR 2025

SC-4, 20 MAR 2025 to 17 APR 2025