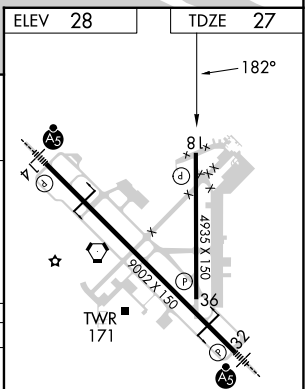
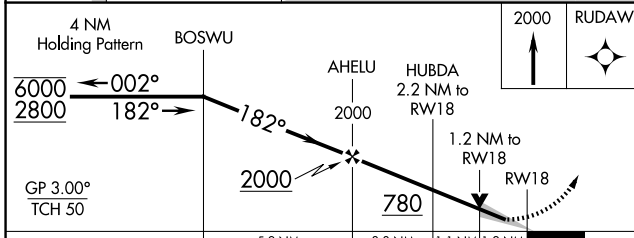
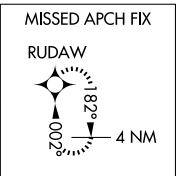
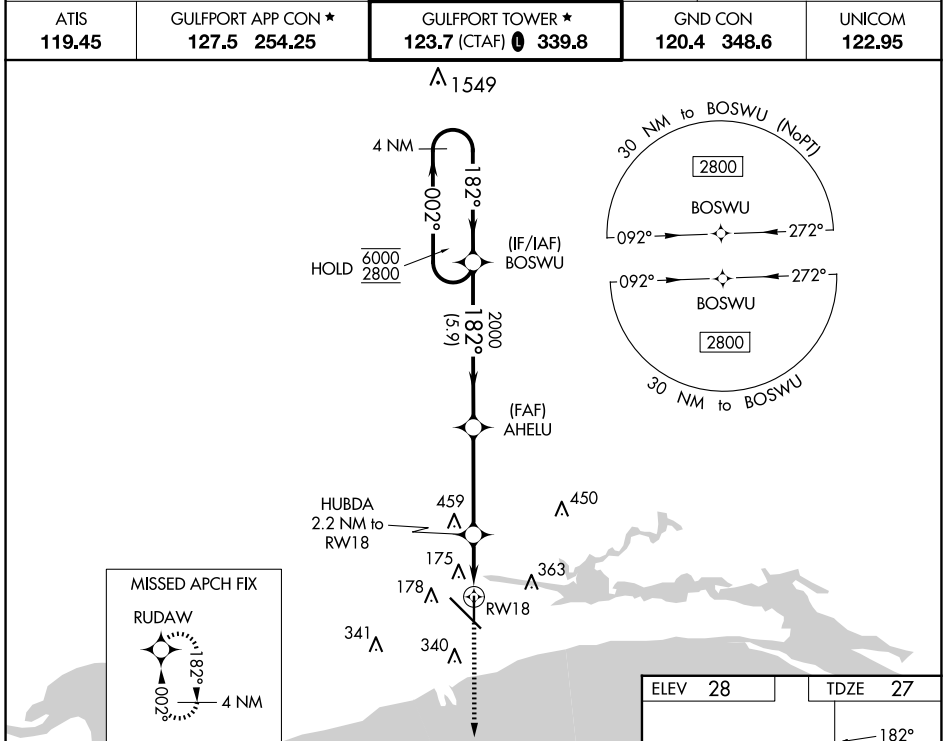


WAAS CH <b>69512</b> <b>W18A</b>	APP CRS <b>182°</b>	Rwy Idg <b>4935</b> TDZE <b>27</b> Apt Elev <b>28</b>
--	------------------------	---

# RNAV (GPS) RWY 18

GULFPORT-BILOXI INTL (GPT)

RNP APCH - GPS.		MISSED APPROACH: Climb to 2000 direct RUDAW and hold.		
ATIS <b>119.45</b>	GULFPORT APP CON * <b>127.5 254.25</b>	GULFPORT TOWER * <b>123.7 (CTAF) 339.8</b>	GND CON <b>120.4 348.6</b>	UNICOM <b>122.95</b>



CATEGORY	A	B	C	D
LPV DA		227- <sup>3</sup> / <sub>4</sub>	200 (200- <sup>3</sup> / <sub>4</sub> )	
LNAV/VNAV DA		442-1 <sup>1</sup> / <sub>8</sub>	415 (500-1 <sup>1</sup> / <sub>8</sub> )	
LNAV MDA	440-1	413 (500-1)	440-1 <sup>1</sup> / <sub>8</sub>	413 (500-1 <sup>1</sup> / <sub>8</sub> )
CIRCLING	520-1 492 (500-1)	640-1 612 (700-1)	760-2 732 (800-2)	760-2 <sup>1</sup> / <sub>4</sub> 732 (800-2 <sup>1</sup> / <sub>4</sub> )

HIRL Rwy 14-32 **1**  
MIRL Rwy 18-36 **1**

SC-4, 20 MAR 2025 to 17 APR 2025

SC-4, 20 MAR 2025 to 17 APR 2025