

VORTAC GPT <b>109.0</b> Chan <b>27</b>	APP CRS <b>307°</b>	Rwy Idg TDZE Apt Elev	<b>9002</b> <b>27</b> <b>28</b>
--	------------------------	-----------------------------	---------------------------------------

# VOR Z RWY 32

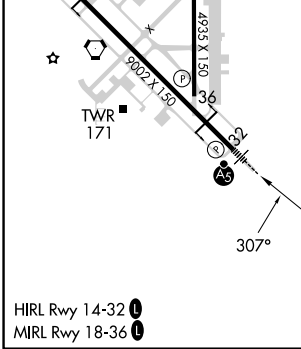
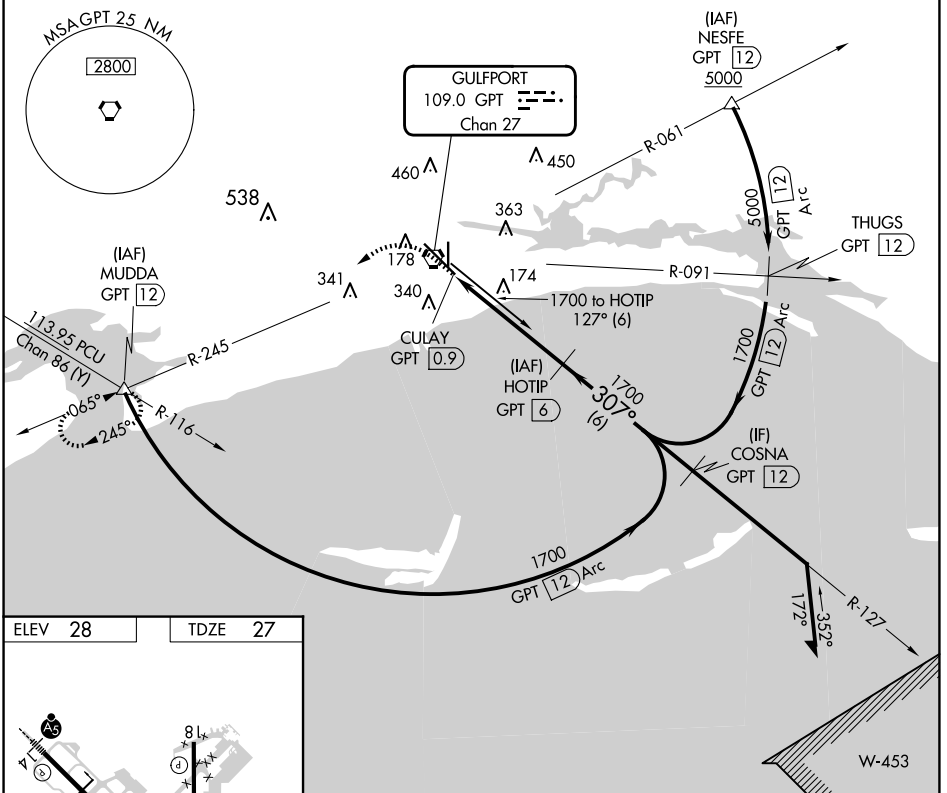
GULFPORT-BILOXI INTL (GPT)

DME required.

**MAJRS** MISSED APPROACH: Climb to 700 then climbing left turn to 2000 on GPT VORTAC R-245 to MUDDA INT/12 DME and hold.

**ASR** Rwy 32 helicopter visibility reduction below RVR 4000 NA.  
For inop ALS, increase S-32 Cat A/B visibility to RVR 5500, and Cat C/D/E to RVR 6000.

ATIS <b>119.45</b>	GULFPORT APP CON * <b>127.5 254.25</b>	GULFPORT TOWER * <b>123.7 (CTAF) 339.8</b>	GND CON <b>120.4 348.6</b>	UNICOM <b>122.95</b>
-----------------------	---	---	-------------------------------	-------------------------



ELEV 28	TDZE 27				
700	2000	GPT R-245	MUDDA	HOTIP GPT 6	Remain within 15 NM
		VGSi and descent angles not coincident (VGSi Angle 3.00/TCH 72).			
CATEGORY	A	B	C	D	E
S-32	440/40 413 (500-3/4)				
<b>C</b> CIRCLING	520-1 492 (500-1)	640-1 612 (700-1)	760-2 732 (800-2)	760-2 1/4 732 (800-2 1/4)	760-2 1/2 732 (800-2 1/2)

SC-4, 20 MAR 2025 to 17 APR 2025

SC-4, 20 MAR 2025 to 17 APR 2025