

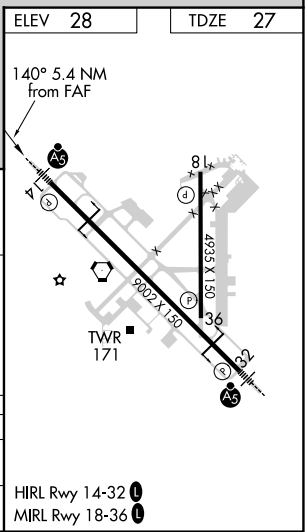
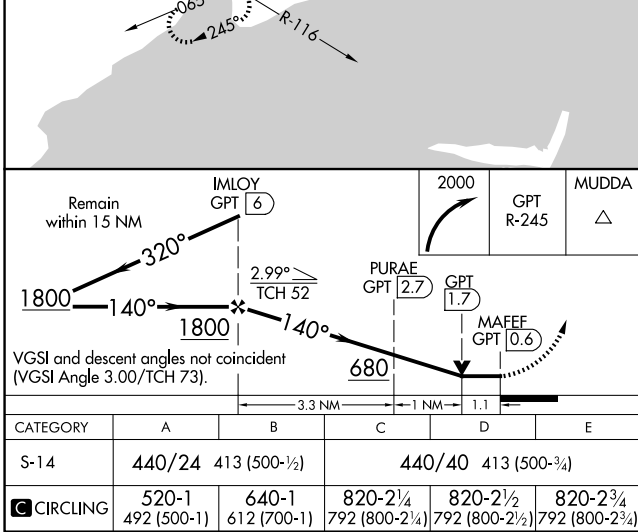
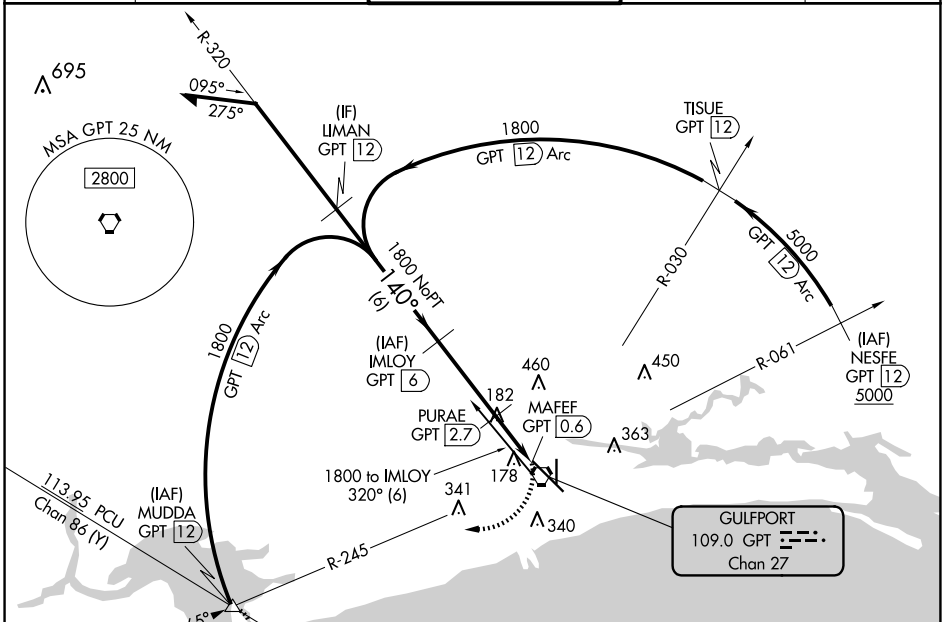
VORTAC GPT 109.0 Chan 27	APP CRS 140°	Rwy Idg TDZE 27 Apt Elev 28	9002
--	------------------------	---	-------------

VOR Z or TACAN Z RWY 14

GULFPORT-BILOXI INTL (GPT)

DME required.		MALSR	MISSED APPROACH: Climbing right turn to 2000 on GPT VORTAC R-245 to MUDDA INT/12 DME and hold.
For inop ALS, increase S-14 Cat C/D/E visibility to RVR 6000. ASR			

ATIS 119.45	GULFPORT APP CON * 127.5 254.25	GULFPORT TOWER * 123.7 (CTAF) 0 339.8	GND CON 120.4 348.6	UNICOM 122.95
-----------------------	---	---	-------------------------------	-------------------------



SC-4, 20 MAR 2025 to 17 APR 2025

SC-4, 20 MAR 2025 to 17 APR 2025