


JAWBN SEVEN ARRIVAL

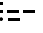
AL-582 (FAA)

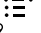
SEATTLE, WASHINGTON

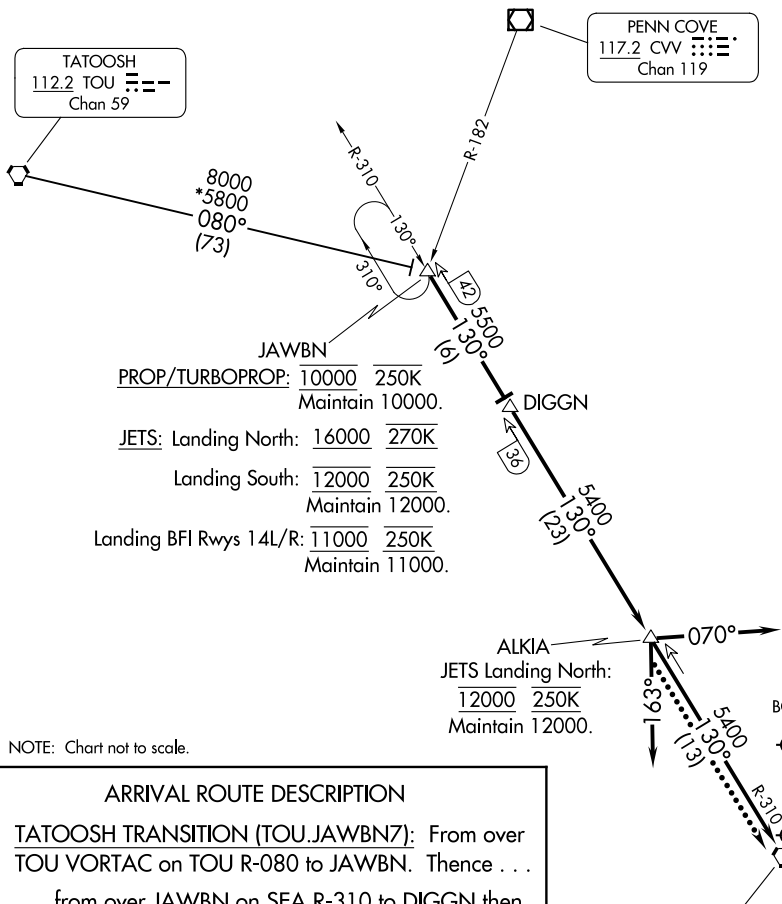
RADAR and DME required.

SEATTLE APP CON
125.6 273.45
BFI ATIS
127.75
KTCM D-ATIS
135.825 270.1
SEA D-ATIS
118.0

ROSLN 

TATOOSH
112.2 TOU 
Chan 59

PENN COVE
117.2 CVV 
Chan 119



PROP/TURBOPROP: 10000 250K
Maintain 10000.

JETS: Landing North: 16000 270K

Landing South: 12000 250K
Maintain 12000.

Landing BFI Rwy 14L/R: 11000 250K
Maintain 11000.

NOTE: Chart not to scale.

ARRIVAL ROUTE DESCRIPTION

TATOOSH TRANSITION (TOU.JAWBN7): From over TOU VORTAC on TOU R-080 to JAWBN. Thence . . .
. . . from over JAWBN on SEA R-310 to DIGGN then on SEA R-310 to ALKIA thence . . .

- LANDING SOUTH: depart ALKIA heading 070° for RADAR vectors to final approach course.
- LANDING NORTH: depart ALKIA heading 163° for RADAR vectors to final approach course.
- LANDING MCCHORD FLD: depart ALKIA proceed direct SEA VORTAC.
- LOST COMMUNICATIONS: After ALKIA, proceed direct SEA VORTAC.

MCCHORD FLD
 (JOINT BASE LEWIS-MCCHORD)

JAWBN SEVEN ARRIVAL

SEATTLE, WASHINGTON

NW-1, 20 MAR 2025 to 17 APR 2025

NW-1, 20 MAR 2025 to 17 APR 2025