

# BUFTT ONE DEPARTURE (RNAV)

NAVY KEY WEST DEP CON ★  
124.025 313.7  
ATIS  
119.675  
CLNC DEL  
121.9  
GND CON  
121.9  
KEY WEST TOWER ★  
118.2 (CTAF) 257.8

RNAV 1-DME/DME/IRU or GPS.  
RADAR required. RADAR required  
for non-GPS equipped aircraft.

**TOP ALTITUDE:  
ASSIGNED BY ATC**

NOTE: Jet aircraft only.

TAKEOFF MINIMUMS

Rwys 9, 27: Standard with minmum climb of 500' per NM to 503.

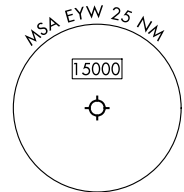
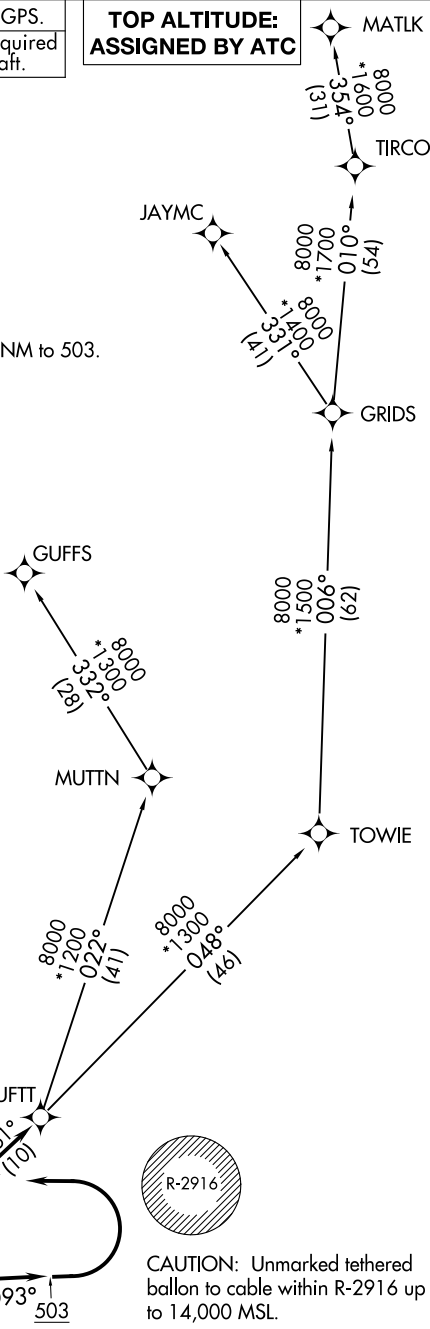
**DEPARTURE ROUTE DESCRIPTION**

TAKEOFF RUNWAY 9: Climb on heading 093° to 503, then left turn direct MOODI at or above 3000 at or below 250K, thence...

TAKEOFF RUNWAY 27: Climb on heading 273° to 503, then right turn direct SKARR, then on track 051° to cross MOODI at or above 3000 and at or below 250K, thence...

... on track 051° to BUFTT, then on assigned transition, maintain ATC assigned altitude, expect clearance to filed altitude within 10 minutes after departure.

GUFFS TRANSITION (BUFTT1.GUFFS)  
JAYMC TRANSITION (BUFTT1.JAYMC)  
MATLK TRANSITION (BUFTT1.MATLK)



NOTE: Chart not to scale.



CAUTION: Unmarked tethered balloon to cable within R-2916 up to 14,000 MSL.

SE-3, 20 MAR 2025 to 17 APR 2025

SE-3, 20 MAR 2025 to 17 APR 2025