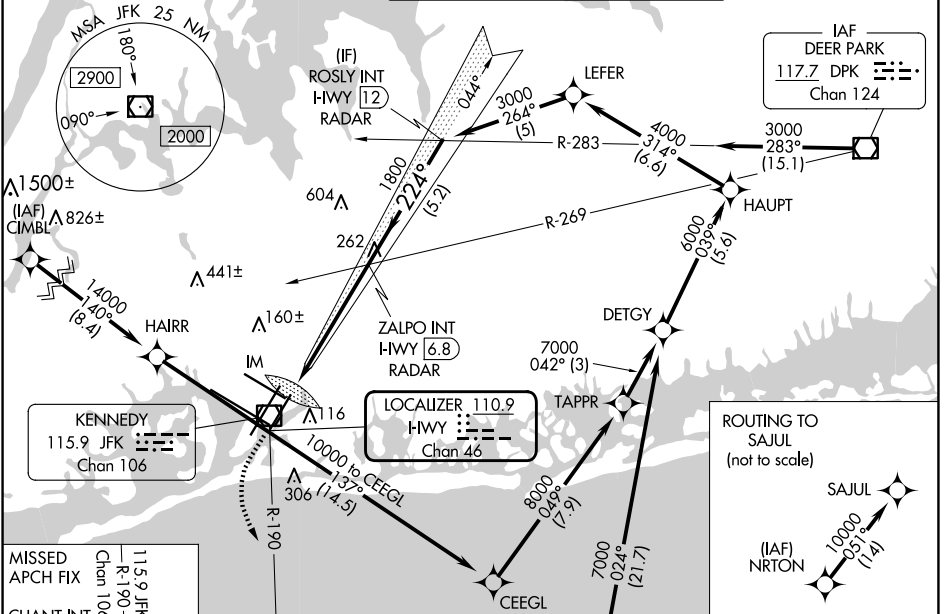


LOC/DME I-HWY 110.9 Chan 46	APP CRS 224°	Rwy Idg 8400 TDZE 12 Apt Elev 13
---	------------------------	---

ILS RWY 22L (CAT II & III)

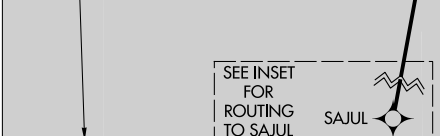
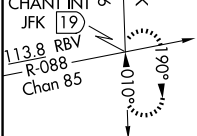
JOHN F KENNEDY INTL (JFK)

RNAV 1-GPS or RADAR required for procedure entry. From CIMBL, NRTON: RNAV 1-GPS required.			ALSIF-2 	MISSED APPROACH: Climb to 500 then climbing left turn to 3000 on JFK VOR/DME R-190 to CHANT INT/19 DME and hold.		
Simultaneous approach authorized.						
D-ATIS (ARR/DEP) (ARR-NE) (ARR-SW) 128.725 117.7 115.4	NEW YORK APP CON 128.125 269.0	KENNEDY TOWER Rwys 4R/22L and 13L/31R 119.1 281.55 Rwys 4L/22R and 13R/31L 123.9 281.55	GND CON 121.9 348.6	CLNC DEL 135.05 348.6	CPDLC	

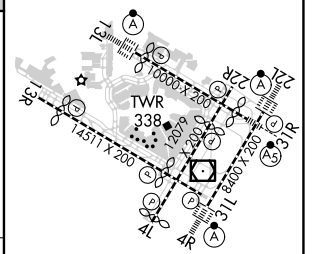
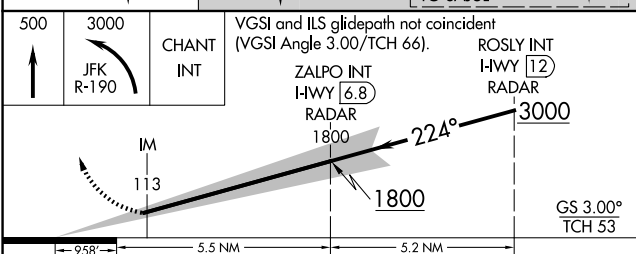


NE-2, 20 MAR 2025 to 17 APR 2025

NE-2, 20 MAR 2025 to 17 APR 2025



ELEV 13	D	TDZE 12
---------	----------	---------



500	3000	CHANT INT	VGSI and ILS glidepath not coincident (VGSI Angle 3.00/TCH 66).	ROSLY INT I-HWY (12) RADAR
	JFK R-190			
IM		ZALPO INT I-HWY (6.8) RADAR		
113		1800		
958'		5.5 NM	5.2 NM	GS 3.00° TCH 53
CATEGORY	A	B	C	D
S-ILS 22L	CAT II RA 113/12 100 DA 112			
S-ILS 22L	CAT III RVR 06			

CATEGORY II & III ILS - SPECIAL AIRCREW & AIRCRAFT CERTIFICATION REQUIRED

RLS Rwys 13L and 13R
HIRL all Rwys
TDZ/CL Rwys 4L, 4R, 13L, 22L and 31R