

LOC/DME I-HIQ <b>110.9</b> Chan <b>46</b>	APP CRS <b>044°</b>	Rwy Idg <b>11010</b> TDZE <b>13</b> Apt Elev <b>13</b>
---	------------------------	--

# ILS or LOC RWY 4L

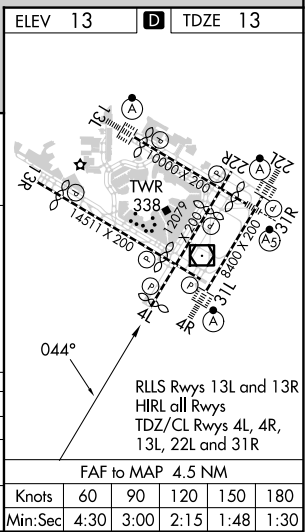
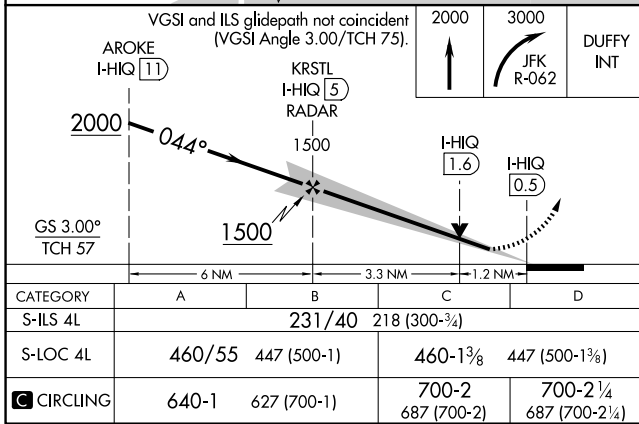
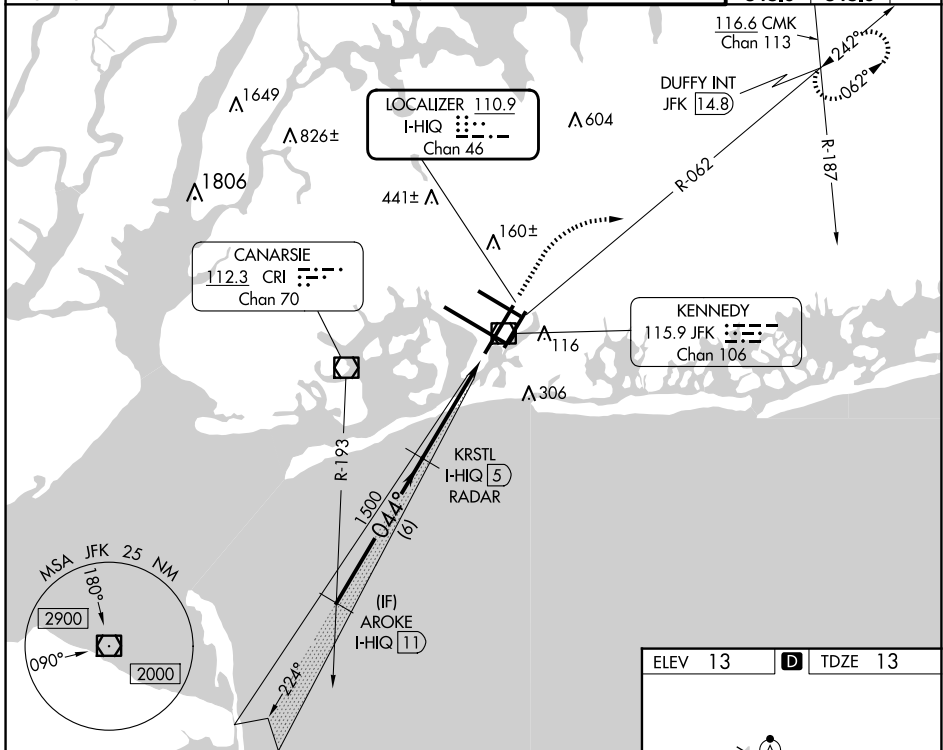
JOHN F KENNEDY INTL (JFK)

RADAR required for procedure entry. DME or RADAR required for LOC only.

MISSED APPROACH: Climb to 2000 then climbing right turn to 3000 on JFK VOR/DME R-062 to DUFFY INT/JFK 14.8 DME and hold.

Simultaneous approach authorized.  
Autopilot coupled approach NA below 200 feet MSL.

D-ATIS (ARR/DEP) (ARR-NE) (ARR-SW) <b>128.725 117.7 115.4</b>	NEW YORK APP CON <b>128.125 269.0</b>	KENNEDY TOWER Rwys 4R/22L and 13L/31R <b>119.1 281.55</b> Rwys 4L/22R and 13R/31L <b>123.9 281.55</b>	GND CON <b>121.9 348.6</b>	CLNC DEL <b>135.05 348.6</b>	CPDLC
---	--	---	-------------------------------	---------------------------------	-------



NE-2, 20 MAR 2025 to 17 APR 2025

NE-2, 20 MAR 2025 to 17 APR 2025