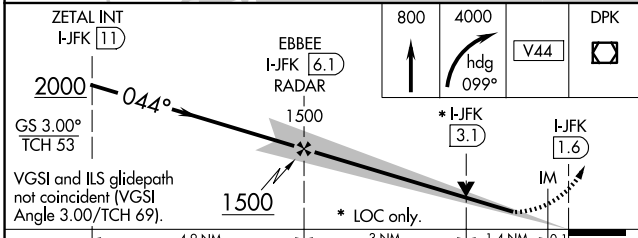
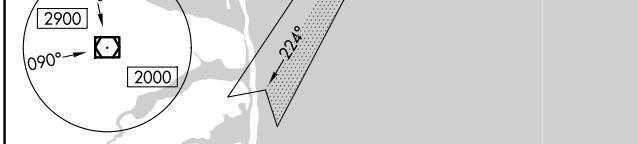
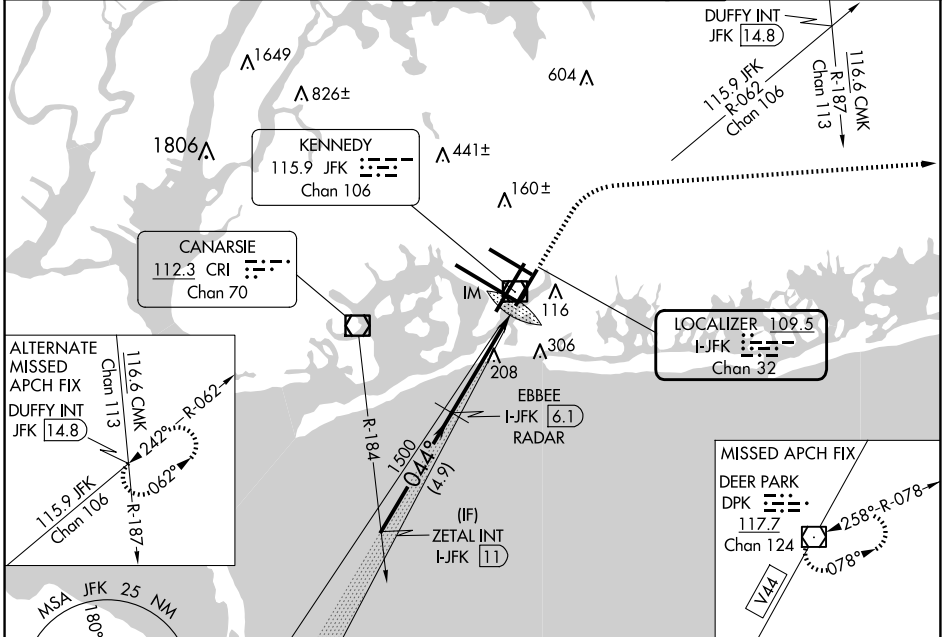


LOC/DME I-JFK	APP CRS	Rwy ldg	8400
109.5	044°	TDZE	12
Chan 32		Apt Elev	13

ILS or LOC RWY 4R

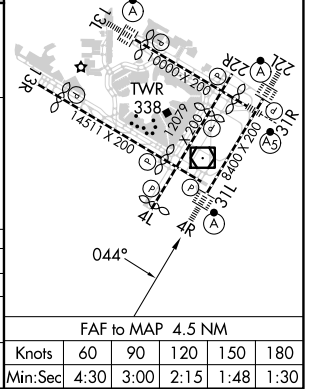
JOHN F KENNEDY INTL (JFK)

RADAR required for procedure entry.		ALSF-2	MISSED APPROACH: Climb to 800 then climbing right turn to 4000 heading 099° and V44 to DPK VOR/DME and hold.		
Simultaneous approach authorized.					
D-ATIS (ARR/DEP)(ARR-NE) (ARR-SW)	NEW YORK APP CON	KENNEDY TOWER		GND CON	CLNC DEL
128.725 117.7 115.4	128.125 269.0	Rwys 4R/22L and 13L/31R 119.1 281.55		121.9	135.05
		Rwys 4L/22R and 13R/31L 123.9 281.55		348.6	348.6
				CPDLC	



CATEGORY	A	B	C	D
S-ILS 4R	212/18		200 (200-1/2)	
S-LOC 4R	540/24	528 (600-1/2)	540/55	528 (600-1)
CIRCLING	640-1	627 (700-1)	680-1 3/4 667 (700-1 3/4)	680-2 667 (700-2)

ELEV 13	TDZE 12
RLS Rwys 13L and 13R	
HIRL all Rwys	
TDZ/CL Rwys 4L, 4R, 13L, 22L and 31R	



NE-2, 20 MAR 2025 to 17 APR 2025

NE-2, 20 MAR 2025 to 17 APR 2025