

# RNAV (GPS) X RWY 22L


JOHN F KENNEDY INTL (JFK)

APP CRS <b>234°</b>	Rwy Idg TDZE Apt Elev	<b>8400</b> <b>12</b> <b>13</b>
------------------------	-----------------------------	---------------------------------------

RNP APCH - GPS.

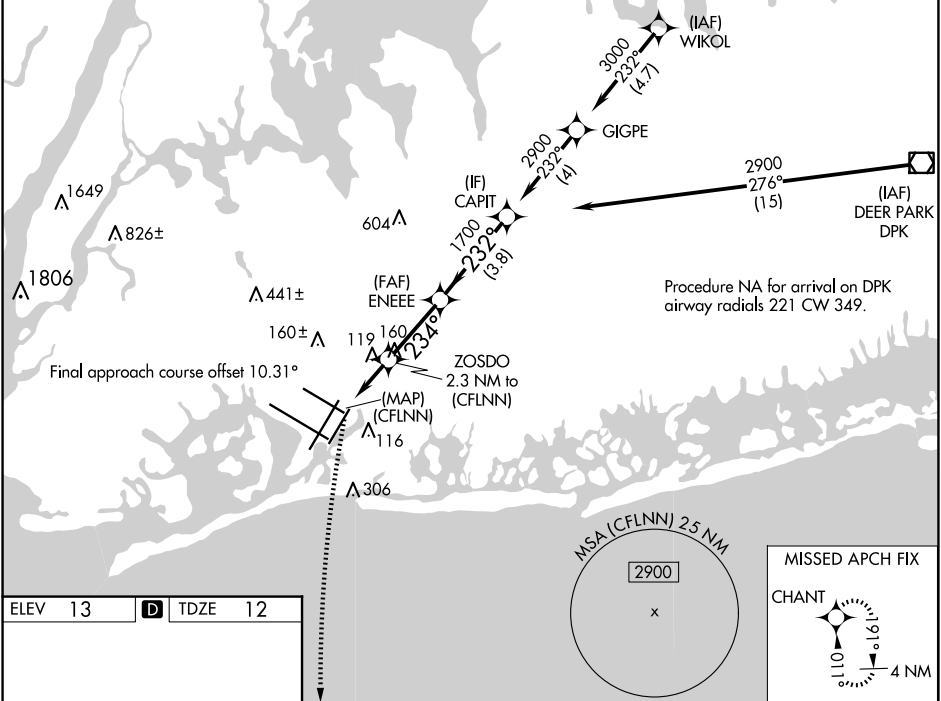
▼ For uncompensated Baro-VNAV systems, LNAV/VNAV NA below -1.4°C or above 5.4°C.  
For inop ALS, increase LNAV/VNAV all Cats visibility to RVR 6000.

ALSF-2

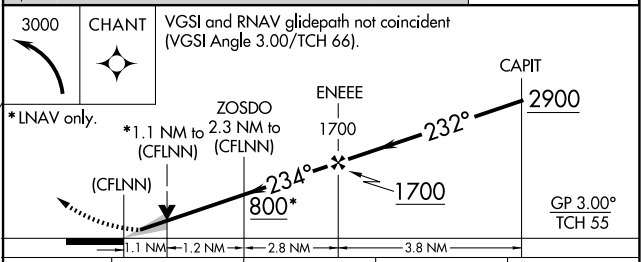
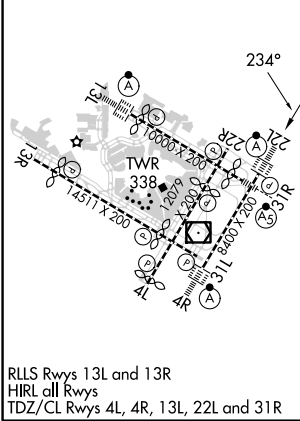


MISSED APPROACH: Climbing left turn to 3000 direct CHANT and hold.

D-ATIS (ARR/DEP) (ARR-NE) (ARR-SW)	NEW YORK APP CON	KENNEDY TOWER Rwys 4R/22L and 13L/31R Rwys 4L/22R and 13R/31L	GND CON	CLNC DEL	CPDLC
<b>128.725 117.7 115.4</b>	<b>128.125 269.0</b>	<b>119.1 281.55</b> <b>123.9 281.55</b>	<b>121.9</b> <b>348.6</b>	<b>135.05</b> <b>348.6</b>	



ELEV 13	<b>D</b>	TDZE 12
---------	----------	---------



CATEGORY	A	B	C	D
LNAV/VNAV DA	413/40		401 (400-3/4)	
LNAV MDA	440/24	428 (500-1/2)	440/40	428 (500-3/4)
<b>C</b> CIRCLING	640-1	627 (700-1)	680-1 3/4 667 (700-1 3/4)	680-2 667 (700-2)

NE-2, 20 MAR 2025 to 17 APR 2025

NE-2, 20 MAR 2025 to 17 APR 2025