

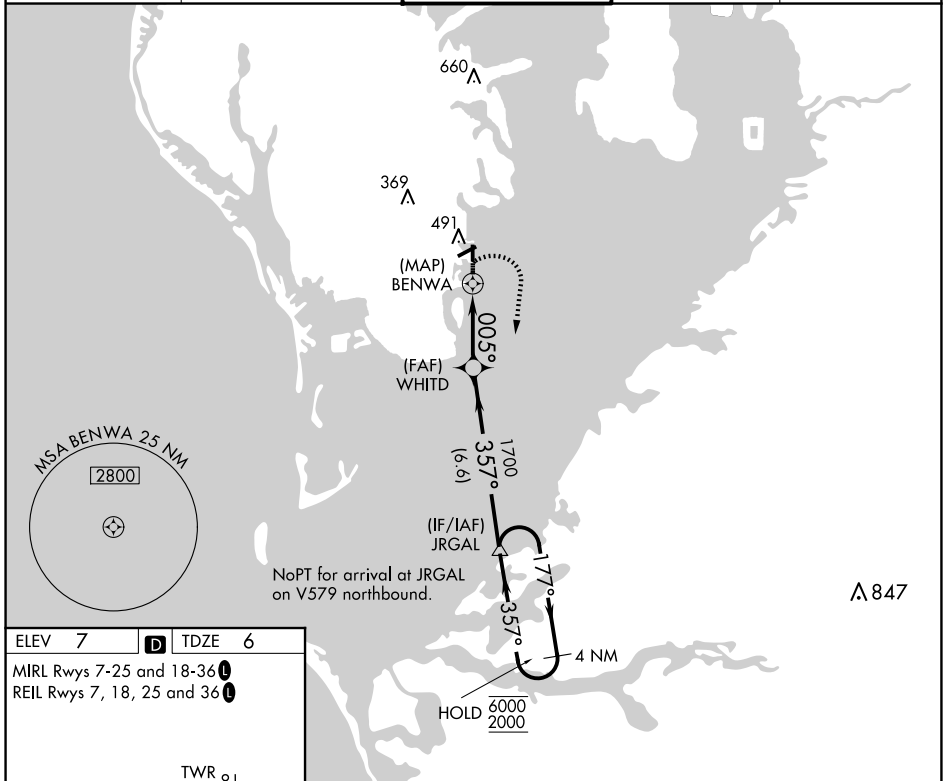
APP CRS 005°	Rwy Idg TDZE Apt Elev	2559 6 7
------------------------	-----------------------------	-------------------------------------

RNAV (GPS) RWY 36

ALBERT WHITTED (SPG)

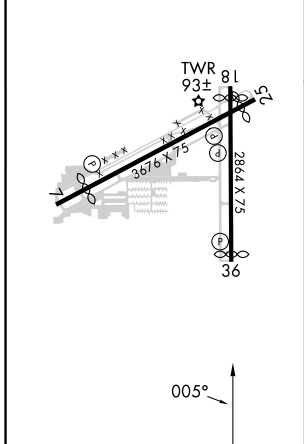
RNP APCH - GPS.	MISSED APPROACH: Climbing right turn to 2000 direct JRGAL and hold.
<p>▼ Circling NA northwest of Rwy 7 and 18. Procedure NA at night.</p> <p>▲ Rwy 36 helicopter visibility reduction below 1 SM NA.</p>	

ASOS 118.875	TAMPA APP CON 119.65 316.05 (EAST) 125.3 316.05 (WEST)	WHITTED TOWER ★ 127.4 (CTAF) 0 257.6	GND CON 121.8	UNICOM 122.95
------------------------	--	--	-------------------------	-------------------------



ELEV 7	D	TDZE 6
--------	----------	--------

MIRL Rwy 7-25 and 18-36
REIL Rwy 7, 18, 25 and 36



2000	JRGAL	4 NM Holding Pattern		
6000	2000	JRGAL		
1700	357°	177°		
005°	4.00°	TCH 45		
0.9	3 NM	6.6 NM		
CATEGORY	A	B	C	D
LNAV MDA	540-1 1/8	534 (600-1 1/8)		NA
C CIRCLING	540-1 1/4	533 (600-1 1/4)		NA