

GRAND JUNCTION NINE DEPARTURE

DENVER DEP CON ★
119.7 317.4
ATIS
118.55
GND CON
121.7 257.8
GRAND JUNCTION TOWER ★
118.1 257.8

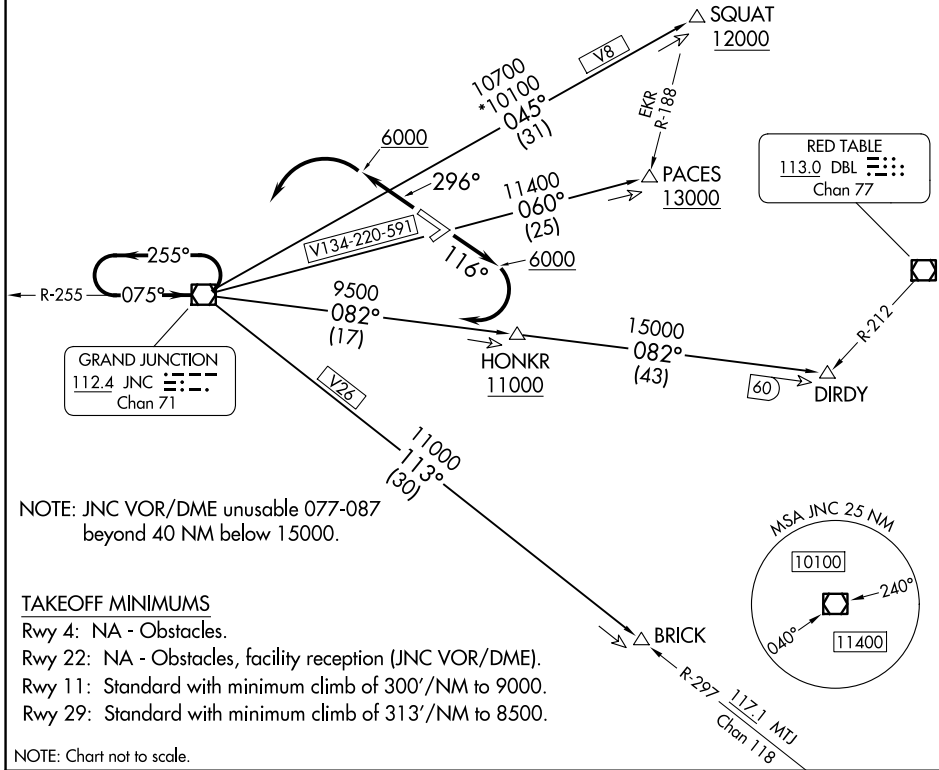
BRICK and DIRDY Transition: DME required.

TOP ALTITUDE:
6000

MEEKER
115.2 EKR
Chan 99

RED TABLE
113.0 DBL
Chan 77

GRAND JUNCTION
112.4 JNC
Chan 71



NOTE: JNC VOR/DME unusable 077-087
beyond 40 NM below 15000.

TAKEOFF MINIMUMS

- Rwy 4: NA - Obstacles.
- Rwy 22: NA - Obstacles, facility reception (JNC VOR/DME).
- Rwy 11: Standard with minimum climb of 300'/NM to 9000.
- Rwy 29: Standard with minimum climb of 313'/NM to 8500.

NOTE: Chart not to scale.

DEPARTURE ROUTE DESCRIPTION

- TAKEOFF RUNWAY 11: Climb on heading 116° to 6000, then right turn direct JNC VOR/DME, thence. . . .
- TAKEOFF RUNWAY 29: Climb on heading 296° to 6000, then left turn direct JNC VOR/DME, thence. . . .
- . . . (transition) maintain 6000, expect filed altitude 10 minutes after departure.
- BRICK TRANSITION (JNC9.BRICK): From over JNC VOR/DME on JNC R-113 to BRICK.
- DIRDY TRANSITION (JNC9.DIRDY): From over JNC VOR/DME on JNC R-082 to DIRDY.
- PACES TRANSITION (JNC9.PACES): From over JNC VOR/DME on JNC R-060 to PACES.
- SQUAT TRANSITION (JNC9.SQUAT): From over JNC VOR/DME on JNC R-045 to SQUAT.

SW-1, 20 MAR 2025 to 17 APR 2025

SW-1, 20 MAR 2025 to 17 APR 2025