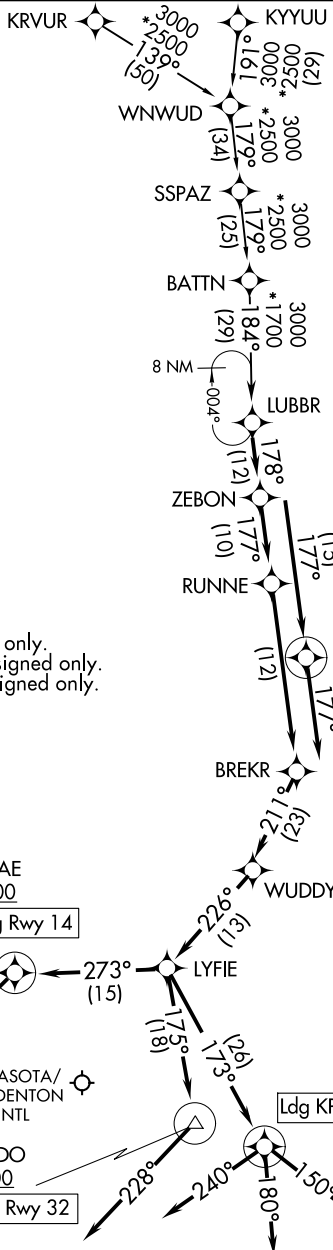


LUBBR THREE ARRIVAL (RNAV)

SARASOTA/BRADENTON, FLORIDA

RNAV 1 - DME/DME/IRU or GPS. RADAR required.

TAMPA APP CON
135.5 279.6 (LAL/SRQ/VNC)
119.65 353.575 (PGD/FA54)
LAL ATIS
118.025
PGD ATIS
135.675
SRQ ATIS
124.375



NOTE: Jet and turboprop aircraft only.
NOTE: KRVUR Transition ATC assigned only.
NOTE: SSPAZ Transition ATC assigned only.

RUTAE
3000
KSRQ Ldg Rwy 14

ZEPHR
3000
Ldg KLAL

MURDO
3000
KSRQ Ldg Rwy 32

ROSTY
3000
Ldg KPGD/KVNC/FA54

(CONTINUED ON FOLLOWING PAGE)

LUBBR THREE ARRIVAL (RNAV)

SARASOTA/BRADENTON, FLORIDA

SE-3, 20 MAR 2025 to 17 APR 2025

SE-3, 20 MAR 2025 to 17 APR 2025

NOTE: Chart not to scale.