

WAAS CH <b>77813</b> <b>W32A</b>	APP CRS <b>321°</b>	Rwy Idg <b>6513</b> TDZE <b>712</b> Apt Elev <b>721</b>
--	------------------------	---

# RNAV (GPS) RWY 32

PELLSTON RGNL/EMMET COUNTY (PLN)

RNP APCH - GPS.

**⚠** Circling Rwy 5, 14 NA at night. Baro-VNAV and VDP NA when using MGN altimeter setting.  
**⚠** For uncompensated Baro-VNAV systems, LNAV/VNAV NA below -20°C or above 54°C.  
 For inop ALS, increase LNAV/VNAV all Cats and LNAV Cat C/D visibility to 1 SM. For inop ALS when using MGN altimeter setting, increase LNAV/VNAV all Cats visibility to 1 SM and LNAV Cat C/D visibility to 1 1/8 SM. When local altimeter setting not received, use MGN altimeter setting and increase LPV DA to 942 feet; increase LNAV/VNAV DA to 1086 feet; increase all MDAs 40 feet and LNAV visibility Cat C/D 1/8 SM.

MALSR

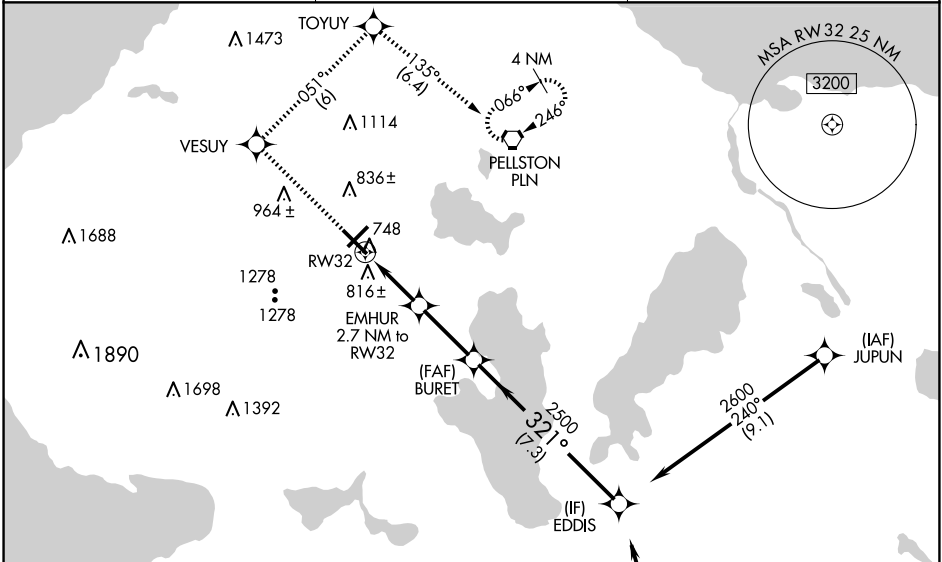


**MISSSED APPROACH:**  
 Climb to 2600 direct VESUY and on track 051° to TOYUY and on track 135° to PLN VORTAC and hold. (Do not exceed 200K until TOYUY).

ASOS  
**119.025**

MINNEAPOLIS CENTER  
**134.6 354.05**

UNICOM  
**123.0 (CTAF) 0**

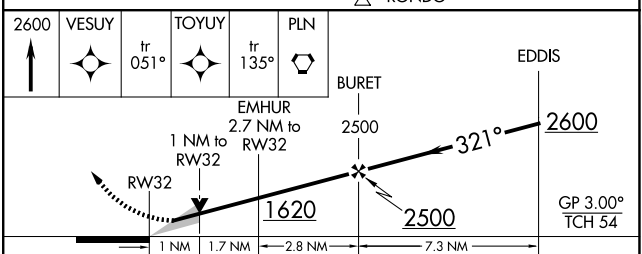
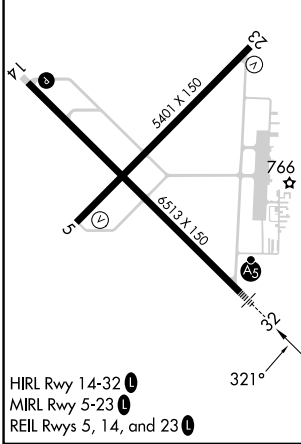


EC-1, 20 MAR 2025 to 17 APR 2025

EC-1, 20 MAR 2025 to 17 APR 2025

ELEV 721	<b>D</b>	TDZE 712
----------	----------	----------

Procedure NA for arrivals at RONDO on V609 southbound.



CATEGORY	A	B	C	D
LPV DA		912-1/2	200 (200-1/2)	
LNAV/VNAV DA		1056-5/8	344 (400-5/8)	
LNAV MDA	1080-1/2	368 (400-1/2)	1080-5/8	368 (400-5/8)
CIRCLING	1280-1 559 (600-1)	1320-1 599 (600-1)	1560-2 1/2 839 (900-2 1/2)	1660-3 939 (1000-3)