

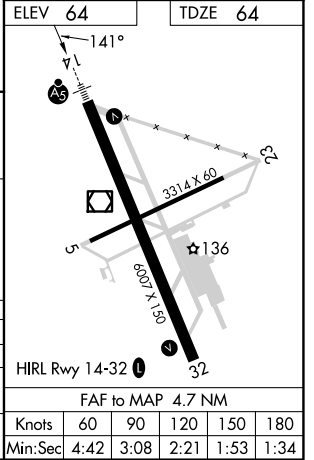
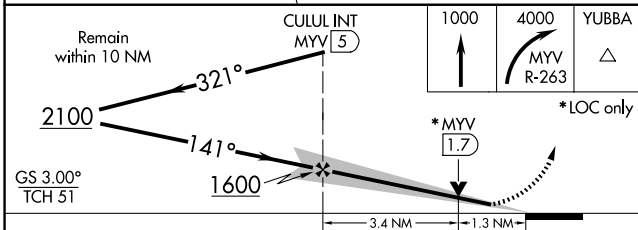
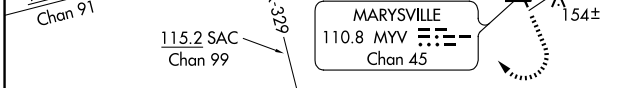
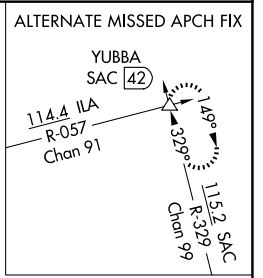
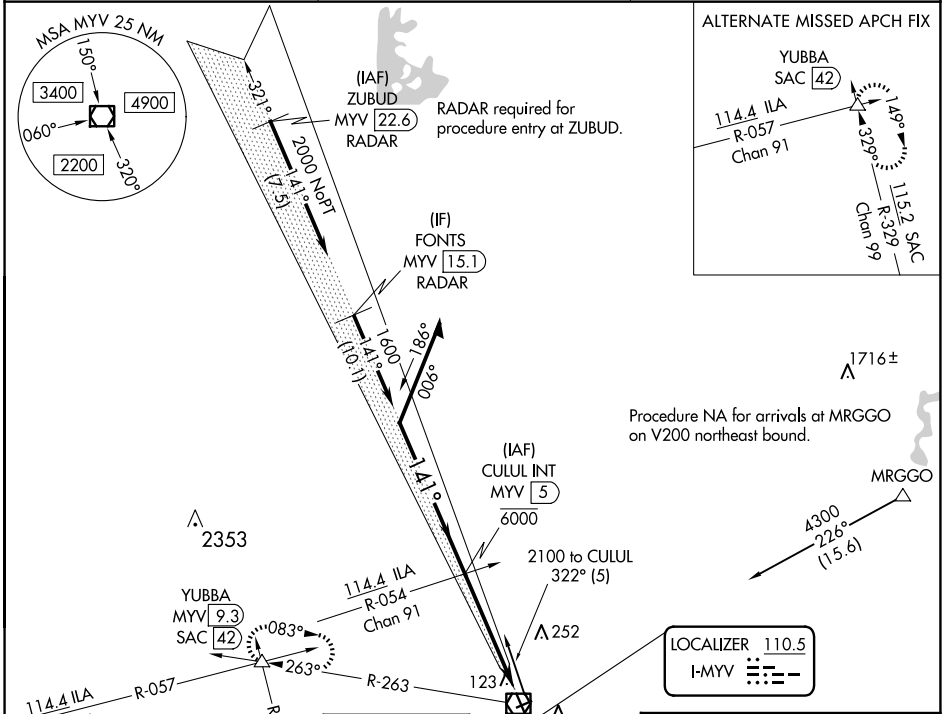
LOC I-MYV <b>110.5</b>	APP CRS <b>141°</b>	Rwy Idg <b>6007</b> TDZE <b>64</b> Apt Elev <b>64</b>
---------------------------	------------------------	---

# ILS or LOC RWY 14

YUBA COUNTY (MYV)

NA Circling Rwy 5, 23 NA at night. Autopilot coupled approach NA below 695.	MALSR 	MISSED APPROACH: Climb to 1000 then climbing right turn to 4000 on MYV VOR/DME R-263 to YUBBA INT/ MYV 9.3 DME and hold, continue climb in hold to 4000.
	ASOS <b>118.475</b>	

NORCAL APP CON <b>125.4 259.1</b>	UNICOM <b>123.05 (CTAF)</b>
--------------------------------------	--------------------------------



CATEGORY	A	B	C	D
S-ILS 14	264-1/2 200 (200-1/2)			
S-LOC 14	520-1/2	456 (500-1/2)	520-7/8	456 (500-7/8)
CIRCLING	540-1	476 (500-1)	560-1 1/2 496 (500-1 1/2)	620-2 556 (600-2)

SW-2, 20 MAR 2025 to 17 APR 2025

SW-2, 20 MAR 2025 to 17 APR 2025

FAF to MAP 4.7 NM
Knots: 60 90 120 150 180
Min:Sec: 4:42 3:08 2:21 1:53 1:34