

ILS or LOC Z RWY 18

LOC I-EGI 111.7	APCH CRS 184°	Rwy Idg TDZE Arprt Elev 8025 195 195
---------------------------	-------------------------	--

[USAF]

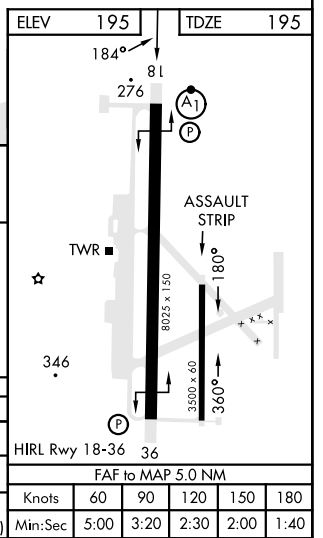
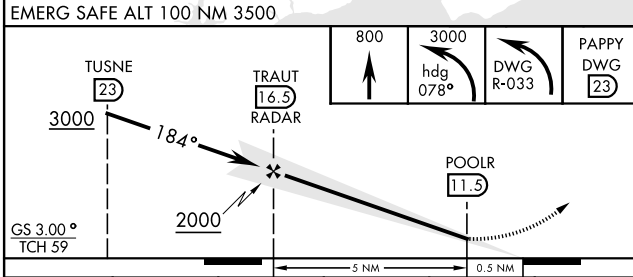
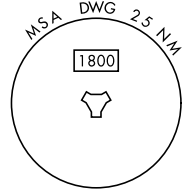
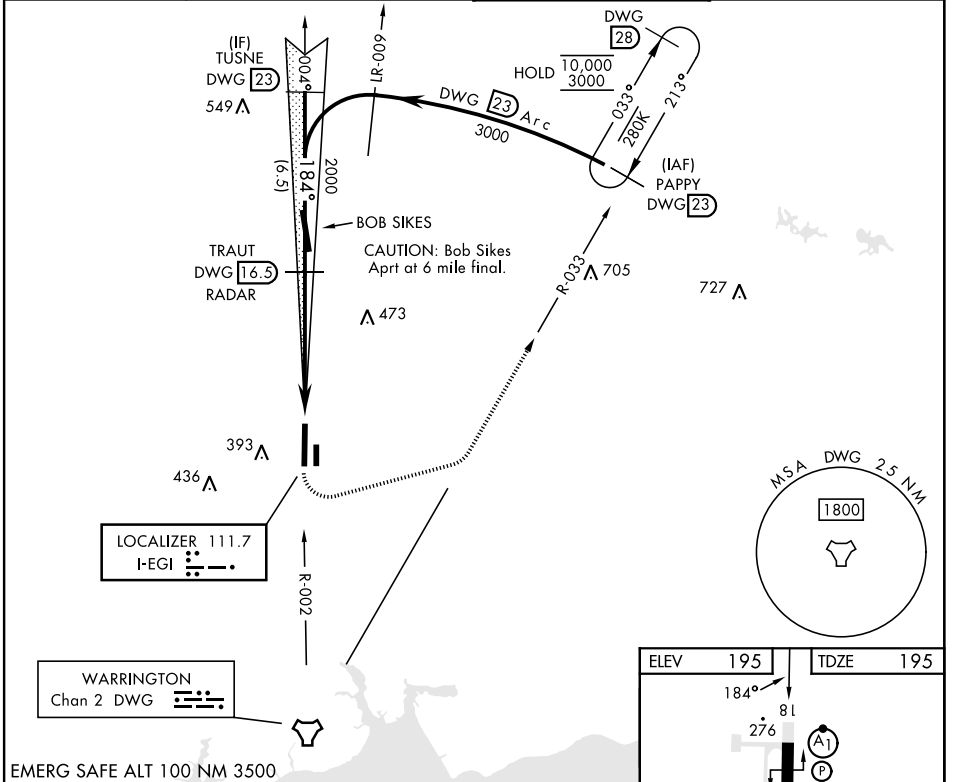
DUKE FLD (EGLIN AF AUX NR 3) (KEGI)

- * When ALS inop, increase RVR to 40, vis to ¼ mile.
- ** When ALS inop, increase RVR to 55, vis to 1 mile.



MISSED APPROACH: Climb to 800, then climbing left turn to 3000 on heading 078° and DWG TACAN R-033 to PAPPY/23 DME and hold.

ATIS ★ 244.575	EGLIN APP CON 125.1 281.45 (271° - 089°) 132.1 360.6 (090° - 270°)	TOWER ★ 133.2 290.425	GND CON 123.25 251.125
--------------------------	--	---------------------------------	----------------------------------



CATEGORY	A	B	C	D	E
S-ILS 18 *	395/24		200	(200-½)	
S-LOC 18 **	540/24	345 (400-½)	540/30	345	(400-¾)
CIRCLING	680-1	740-1	740-1½	760-2	820-2¼
	485 (600-1)	545 (600-1)	545 (600-1½)	565 (600-2)	625 (700-2¼)
HRL Rwy 18-36 36					
FAF to MAP 5.0 NM					
Knots	60	90	120	150	180
Min:Sec	5:00	3:20	2:30	2:00	1:40

ILS or LOC Z RWY 18

SE-3, 20 MAR 2025 to 17 APR 2025

SE-3, 20 MAR 2025 to 17 APR 2025