

RNAV (GPS) RWY 36

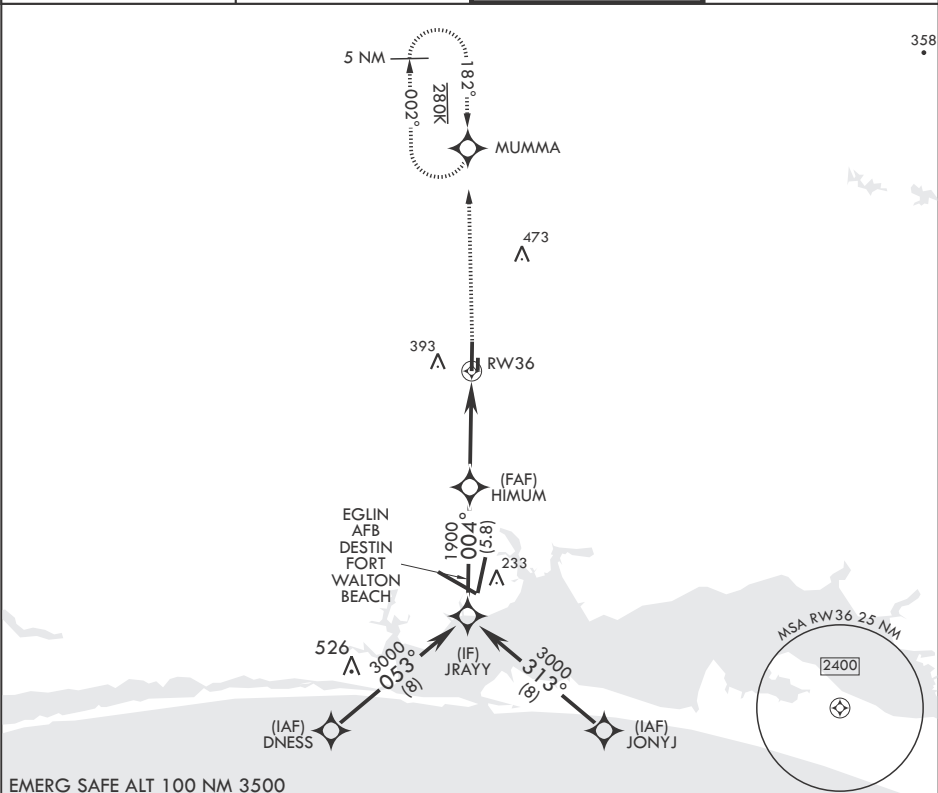
APCH CRS 004°	Rwy Idg 8025
	TDZE 195
	Arprt Elev 195

- (USAF)

DUKE FIELD (EGLIN AF AUX NR 3) (KEGI)

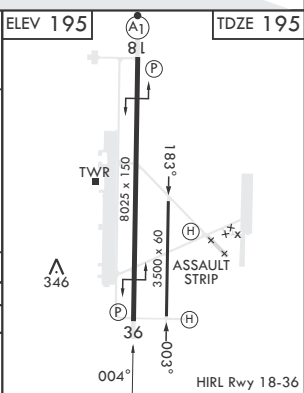
RNP APCH-GPS MISSED APPROACH: Climb to 700, then climbing to 3000 direct MUMMA and hold, continue climb-in-hold to 3000.

ATIS★ 244.575	APP CON 125.1 281.45 271°-089° 132.1 360.6 090°-270°	TOWER★ 133.2 290.425	GND CON 123.25 251.125
-------------------------	--	--------------------------------	----------------------------------



EMERG SAFE ALT 100 NM 3500

JRAY	700	3000	MUMMA	ELEV 195	TDZE 195
3000	↑	↶	⊙	⊙	⊙
004°					
HIMUM					
1900					
3.00° ≥ TCH 50					
1.3 NM to RW36					
5.2 NM					
CATEGORY	A	B	C	D	E
LNVA MDA	640/55	445 (500-1)	640-1½	445 (500-1½)	820-2¼
CIRCLING	680-1 485 (500-1)	740-1 545 (600-1)	740-1½ 545 (600-1½)	760-2 565 (600-2)	820-2¼ 625 (700-2¼)



RNAV (GPS) RWY 36

SE-3, 20 MAR 2025 to 17 APR 2025

SE-3, 20 MAR 2025 to 17 APR 2025