

VALPARAISO, FLORIDA

RNAV (GPS) Y RWY 18


WAAS CH 89520 W18A	APCH CRS 184°	Rwy ldg TDZE Arprt Elev	8025 195 195
--------------------------	------------------	-------------------------------	--------------------

(USAF)

DUKE FIELD (EGLIN AF AUX NR 3) (KEGI)

RNP APCH-GPS

* When ALS inop, increase RVR to 40, vis to 3/4 mile.
 ** When ALS inop, increase CAT A RVR to 40, vis to 3/4 mile; CAT BCDE RVR to 45, vis to 7/8 mile.

ALS-1  MISSED APPROACH: Climb to 3000 direct WUTAR and hold.

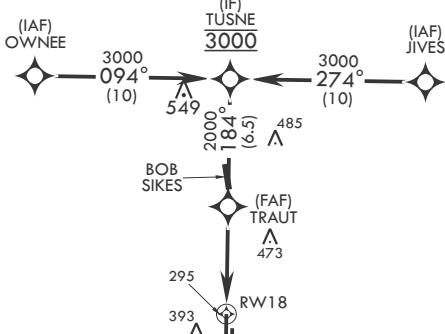
ATIS*
244.575

APP CON
125.1 281.45 271°-089°
132.1 360.6 090°-270°

TOWER*
133.2 290.425

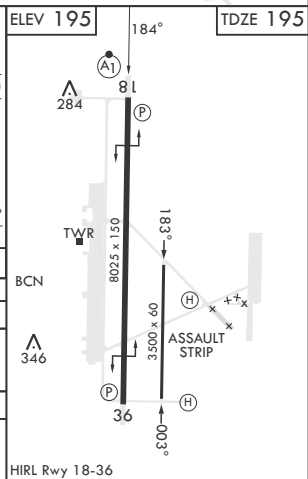
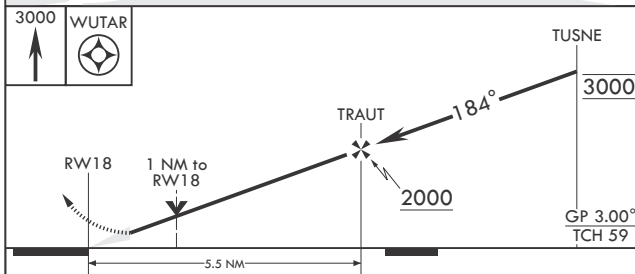
GND CON
123.25 251.125


*** When ALS inop, increase RVR to 55, vis to 1 mile.



For uncompensated Baro-VNAV systems, LNAV/VNAV not authorized below -15° C. or above 54° C.

EMERG SAFE ALT 100 NM 3500



CATEGORY	A	B	C	D	E
LPV DA*	395/24		200	(200-1/2)	
LNAV/VNAV DA**	449/24 254 (300-1/2)	460/24 265 (300-1/2)	468/24 273 (300-1/2)	479/24	284 (300-1/2)
LNAV MDA***	560/24	365 (400-1/2)	560/35	365	(400-3/4)
 CIRCLING	680-1 485 (500-1)	740-1 545 (600-1)	740-1 1/2 545 (600-1 1/2)	760-2 565 (600-2)	820-2 1/4 625 (700-2 1/4)

VALPARAISO, FLORIDA
Orig 26DEC24

30°39'N - 86°31'W

DUKE FIELD (EGLIN AF AUX NR 3) (KEGI)

RNAV (GPS) Y RWY 18

SE-3, 20 MAR 2025 to 17 APR 2025

SE-3, 20 MAR 2025 to 17 APR 2025