

# TACAN RWY 36

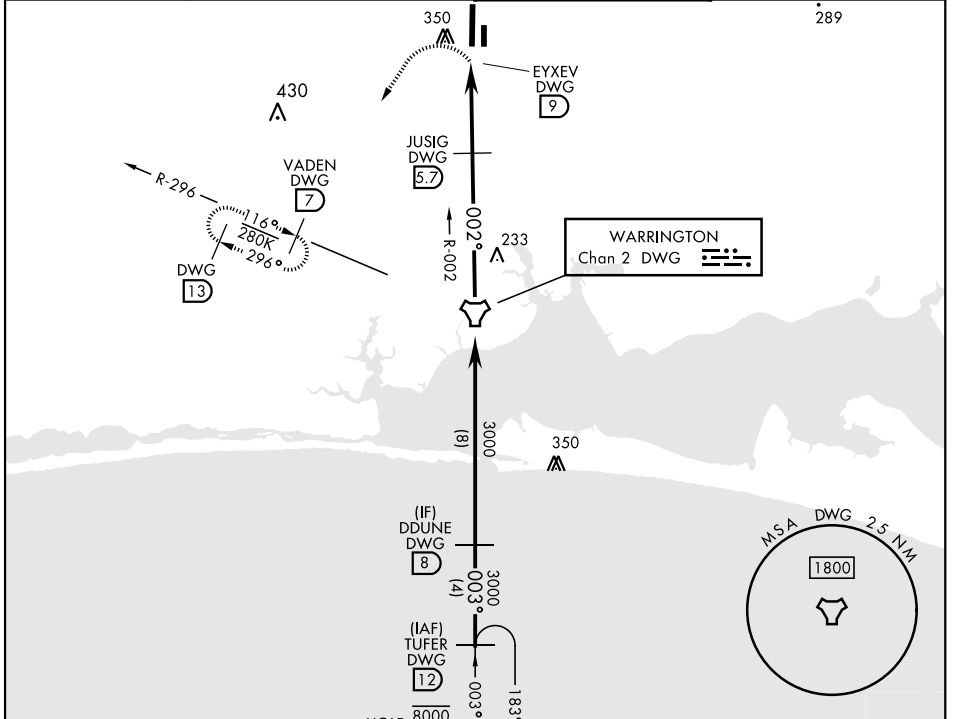
TACAN DWG Chan <b>2</b>	APCH CRS <b>002°</b>	Rwy Idg TDZE Arprt Elev <b>8025</b> <b>195</b> <b>195</b>
----------------------------	-------------------------	--

[USAF]

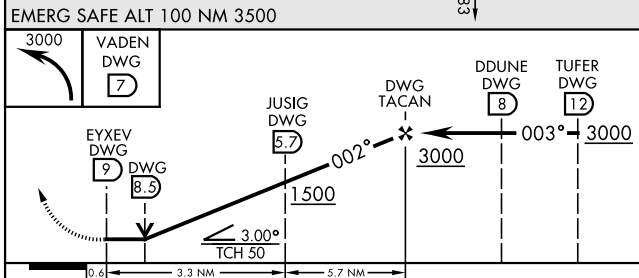
DUKE FLD (EGLIN AF AUX NR 3) (KEGI)

Missed Approach requires use of RNAV or RADAR monitoring. MISSED APPROACH: Climbing left turn to 3000 direct VADEN/DWG TACAN 7 DME and hold, continue climb-in-hold to 3000.

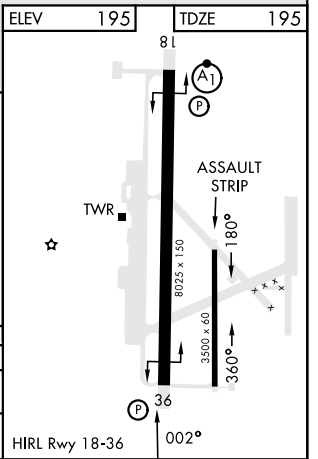
ATIS ★ <b>244.575</b>	EGLIN APP CON <b>125.1 281.45</b> (271°-089°) <b>132.1 360.6</b> (090°-270°)	TOWER ★ <b>133.2 290.425</b>	GND CON <b>123.25 251.125</b>
--------------------------	--	---------------------------------	----------------------------------



ELEV	195	TDZE	195
------	-----	------	-----



CATEGORY	A	B	C	D	E
S-36	600/55	405 (500-1)	600/60	405	(500-1½)
CIRCLING	680-1 485 (500-1)	740-1 545 (600-1)	740-1½ 545 (600-1½)	760-2 565 (600-2)	820-2¼ 625 (700-2¼)



# TACAN RWY 36

SE-3, 20 MAR 2025 to 17 APR 2025

SE-3, 20 MAR 2025 to 17 APR 2025