

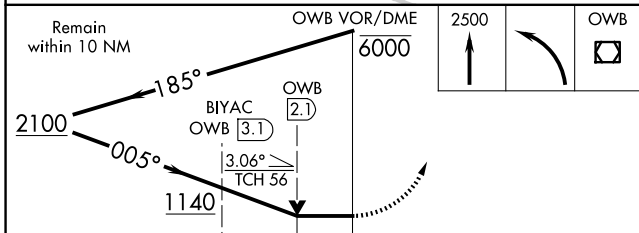
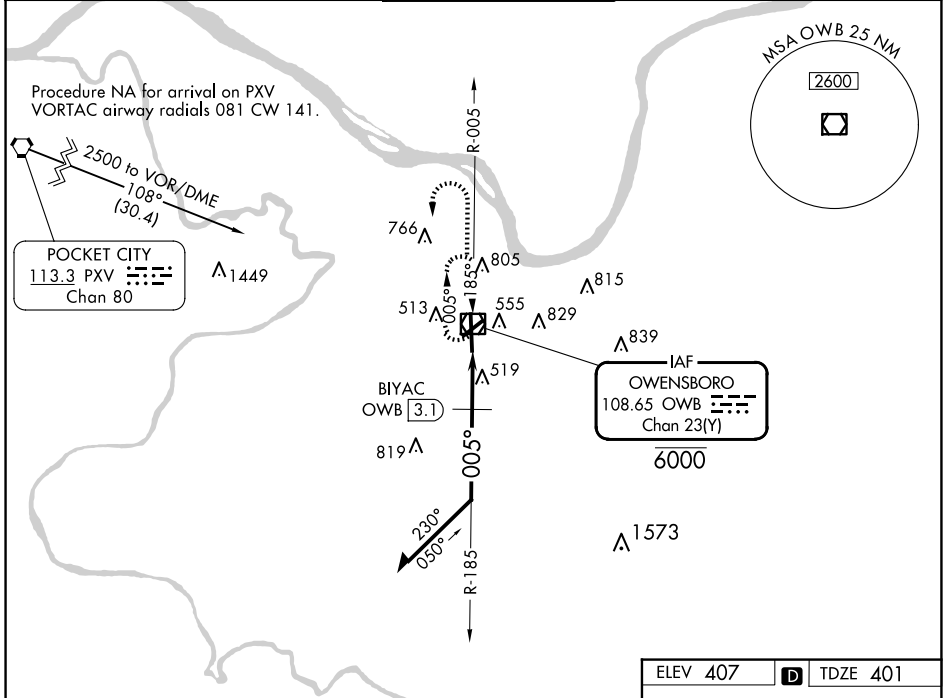
VOR/DME OWB 108.65 Chan 23(Y)	APP CRS 005°	Rwy Idg TDZE Apt Elev	8000 401 407
---	------------------------	-----------------------------	---

VOR RWY 36

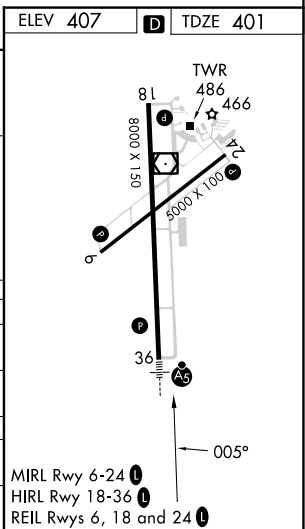
OWENSBORO/DAVIESS COUNTY RGNL (OWB)

For inop ALS, increase S-36 Cat C and D visibility to 2 SM and BIYAC fix minimums S-36 Cat C and D visibility to 1½ SM.	MALSR	MISSED APPROACH: Climb to 2500 then left turn direct OWB VOR/DME and hold.

AWOS-3PT 119.025	EVANSVILLE APP CON ★ 124.025 290.9	OWENSBORO TOWER ★ 120.7 (CTAF) 251.15	GND CON 121.7	UNICOM 122.95
----------------------------	--	---	-------------------------	-------------------------



CATEGORY	A	B	C	D
S-36	1140-½	739 (800-½)	1140-1½	739 (800-1½)
CIRCLING	1140-1	733 (800-1)	1140-2 733 (800-2)	1140-2¼ 733 (800-2¼)
BIYAC FIX MINIMUMS				
S-36	820-½	419 (500-½)	820-¾	419 (500-¾)
CIRCLING	860-1 453 (500-1)	1120-1 713 (800-1)	1140-2 733 (800-2)	1140-2¼ 733 (800-2¼)



SE-1, 20 MAR 2025 to 17 APR 2025

SE-1, 20 MAR 2025 to 17 APR 2025

VOR RWY 36