

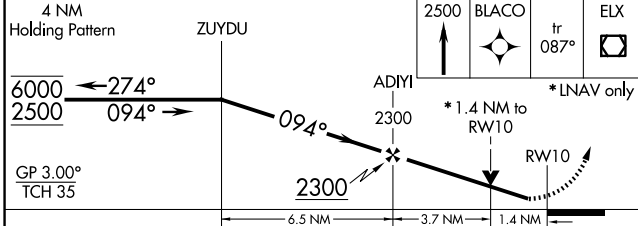
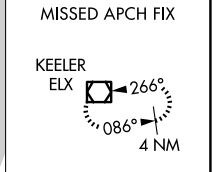
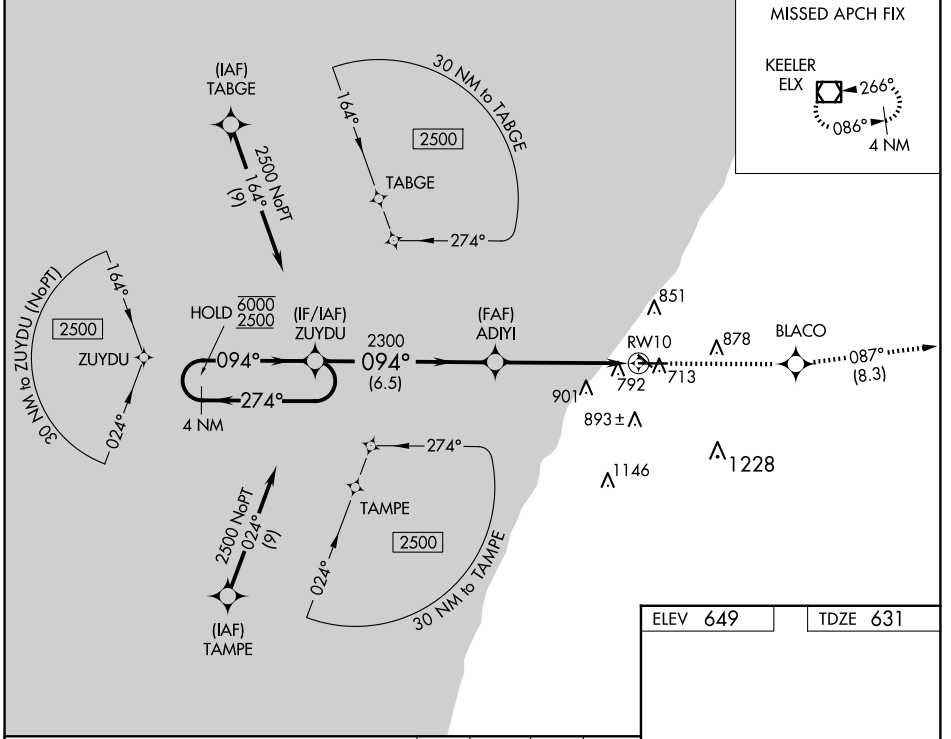
WAAS CH 86912 W10A	APP CRS 094°	Rwy Idg TDZE Apt Elev	6006 631 649
--	------------------------	-----------------------------	---

RNAV (GPS) RWY 10

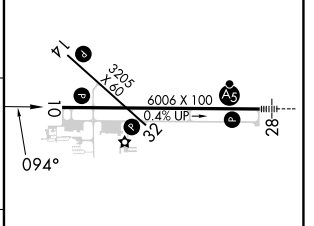
SOUTHWEST MICHIGAN RGNL (BEH)

RNP APCH.		MISSED APPROACH: Climb to 2500 direct BLACO and on track 087° to ELX VOR/DME and hold.	
<p>▼ Rwy 10 helicopter visibility reduction below ¾ SM NA. ▲ For uncompensated Baro-VNAV systems, LNAV/VNAV NA below -20°C or above 54°C.</p>			

ASOS 121.55	SOUTH BEND APP CON* 118.55 257.8	SOUTH BEND CLNC DEL 119.7	UNICOM 123.0 (CTAF)
-----------------------	--	-------------------------------------	-------------------------------



ELEV 649	TDZE 631
----------	----------



CATEGORY	A	B	C	D
LPV DA		881-7/8	250 (300-7/8)	
LNAV/VNAV DA		1068-1½	437 (500-1½)	
LNAV MDA	1100-1	469 (500-1)	1100-1¾	469 (500-1¾)

REIL Rwy 10, 14 and 32
MIRL Rwy 14-32
HIRL Rwy 10-28

EC-1, 20 MAR 2025 to 17 APR 2025

EC-1, 20 MAR 2025 to 17 APR 2025