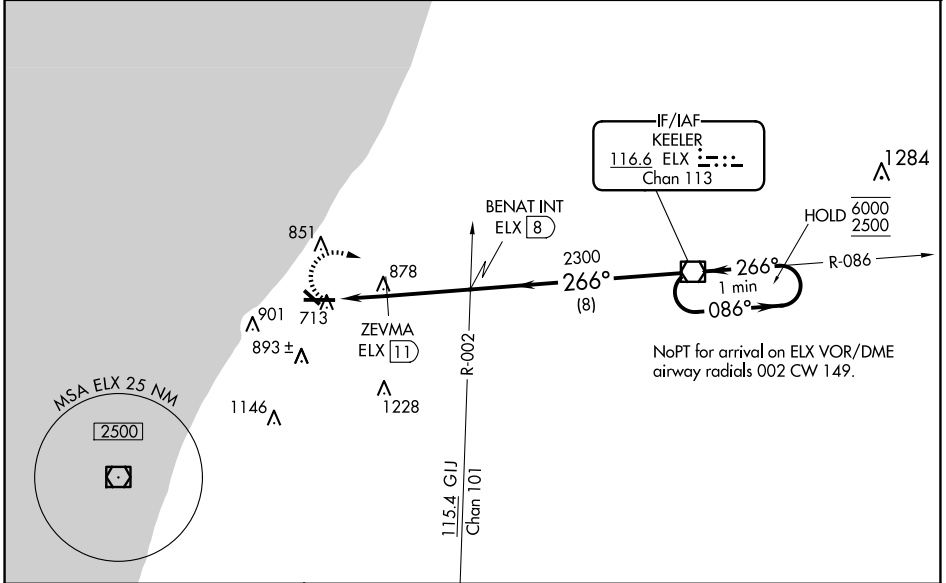


VOR/DME ELX 116.6	APP CRS 266°	Rwy Idg TDZE Apt Elev 6006 649 649
Chan 113		

VOR RWY 28
SOUTHWEST MICHIGAN RGNL (BEH)

DME required.		MALSR 	MISSED APPROACH: Climbing right turn to 2500 direct ELX VOR/DME and hold.
⚠ Circling Rwy 14, 32 NA at night. For inop ALS, increase S-28 Cats A and B visibility to 1 SM. ZEVMA fix minimums: for inop ALS, increase S-28 Cats A and B visibility to 1 SM and Cats C and D visibility to 1 3/8 SM.			
ASOS 121.55	SOUTH BEND APP CON* 118.55 257.8	SOUTH BEND CLNC DEL 119.7	UNICOM 123.0 (CTAF)



ELEV 649	TDZE 649	2500	ELX	
		One Minute Holding Pattern		
CATEGORY	A	B	C	D
S-28	1300-1	651 (700-1)	1300-1 3/8	651 (700-1 3/8)
C CIRCLING	1300-1	651 (700-1)	1300-1 3/4	1340-2 1/4 691 (700-2 1/4)
ZEVMA FIX MINIMUMS				
S-28	1140-3/4	491 (500-3/4)	1140-1	491 (500-1)
C CIRCLING	1140-1	511 (600-1)	1300-1 3/4	1340-2 1/4 691 (700-2 1/4)

REIL Rwys 10, 14 and 32
MIRL Rwy 14-32
HIRL Rwy 10-28

FAF to MAP 4.9 NM

Knots	60	90	120	150	180
Min:Sec	4:54	3:16	2:27	1:58	1:38

EC-1, 20 MAR 2025 to 17 APR 2025

EC-1, 20 MAR 2025 to 17 APR 2025