

SC-2, 20 MAR 2025 to 17 APR 2025

**TOP ALTITUDE:  
 ASSIGNED BY ATC**

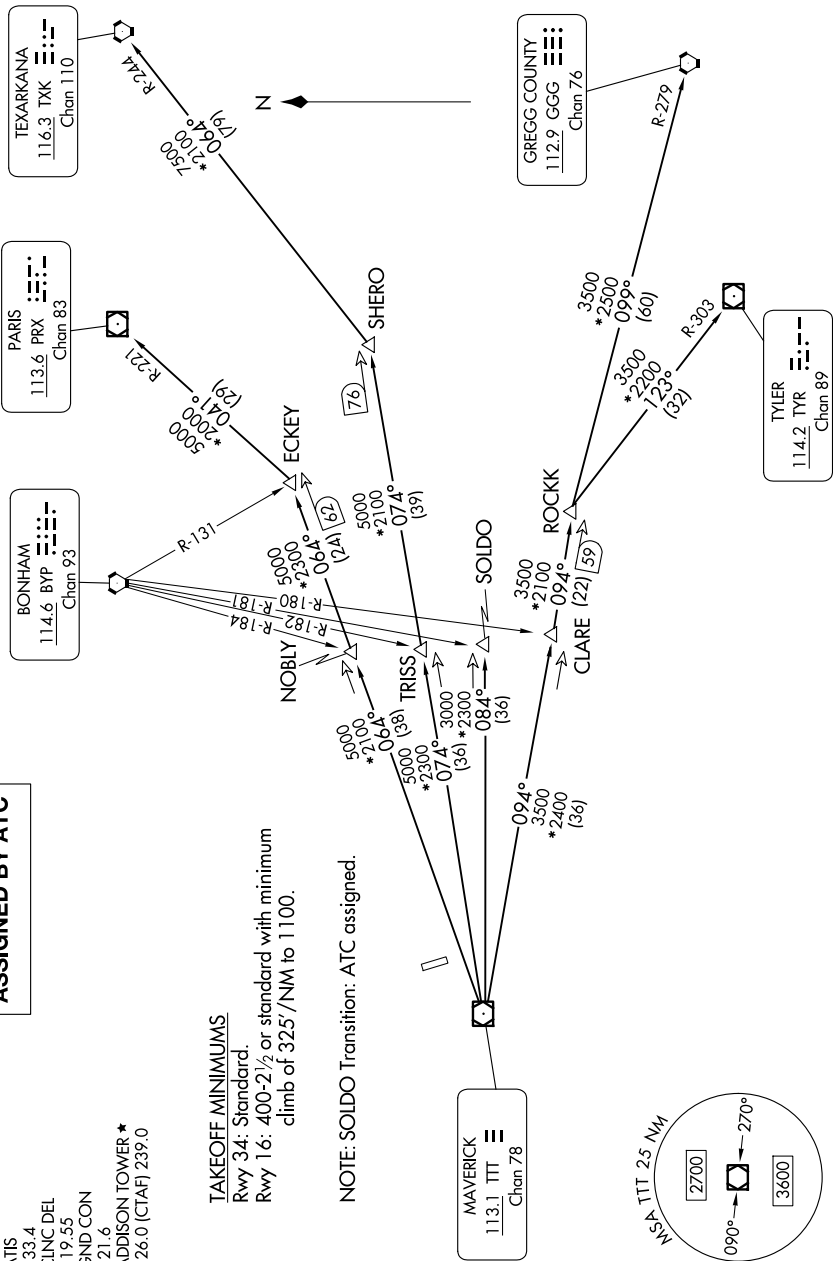
LONE STAR DEP CON  
 124.3 282.275  
 ATIS  
 133.4  
 CINC DEL  
 119.55  
 GND CON  
 121.6  
 ADDISON TOWER \*  
 126.0 (CTAF) 239.0

**TAKEOFF MINIMUMS**

Rwy 34: Standard.  
 Rwy 16: 400-2½ or standard with minimum  
 climb of 325'/NM to 1100.

NOTE: SOLDO Transition: ATC assigned.

RADAR and DME required.



(CONTINUED ON FOLLOWING PAGE)

SC-2, 20 MAR 2025 to 17 APR 2025