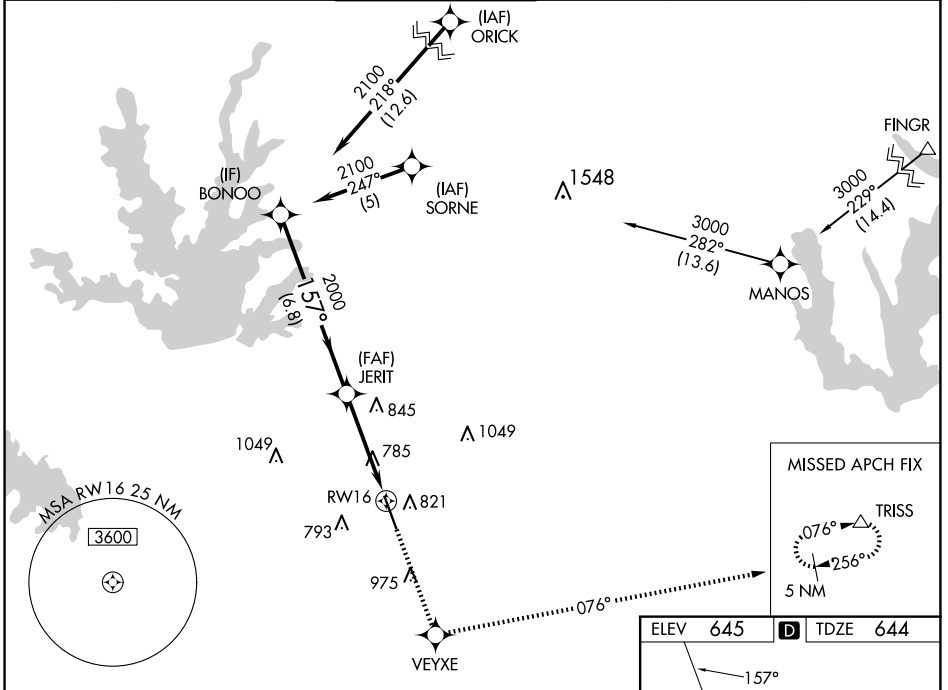


WAAS CH 82202 W 16A	APP CRS 157°	Rwy ldg 6224 TDZE 644 Apt Elev 645
---	------------------------	---

RNAV (GPS) RWY 16

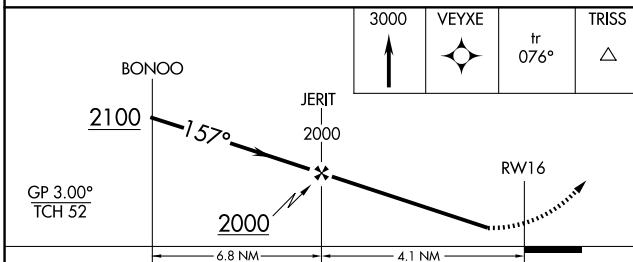
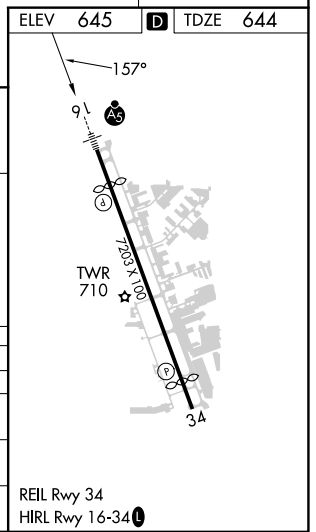
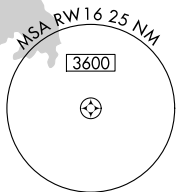
ADDISON (ADS)

RNP APCH-GPS. ⚠ For uncompensated Baro-VNAV systems, LNAV/VNAV NA below -16°C or above 54°C. Rwy 16 helicopter visibility reduction below 1 SM NA. Inop table does not apply to LPV all Cats, and LNAV Cats A/B. For inop ALS, increase LNAV/VNAV all Cats visibility to 1¼ SM, and LNAV Cats C/D to 1½ SM.		MALSR 	MISSED APPROACH: Climb to 3000 direct VEYXE and on track 076° to TRISS and hold.		
ATIS 133.4	LONE STAR APP CON 124.3 282.275	ADDISON TOWER ★ 126.0 (CTAF) 0 239.0	GND CON 121.6	CLNC DEL 119.55	UNICOM 122.95



SC-2, 20 MAR 2025 to 17 APR 2025

SC-2, 20 MAR 2025 to 17 APR 2025



GP 3.00° TCH 52	3000		VEYXE	tr 076°	TRISS
CATEGORY	A	B	C	D	
LPV DA	944-1		300 (300-1)		
LNAV/VNAV DA	1077-1		433 (500-1)		
LNAV MDA	1100-1		456 (500-1)		
CIRCLING	1200-1 555 (600-1)		1280-1¼ 635 (700-1¾)	1400-2½ 755 (800-2½)	