

TEXOMA FIVE DEPARTURE

LONE STAR DEP CON
 124.3 282.275
 ATIS
 133.4
 CLNC DEL
 119.55
 GND CON
 121.6
 ADDISON TOWER ★
 126.0 (CTAF) 239.0

**TOP ALTITUDE:
 ASSIGNED BY ATC**

TULSA
 114.4 TUL :...:
 Chan 91

RADAR and DME required.

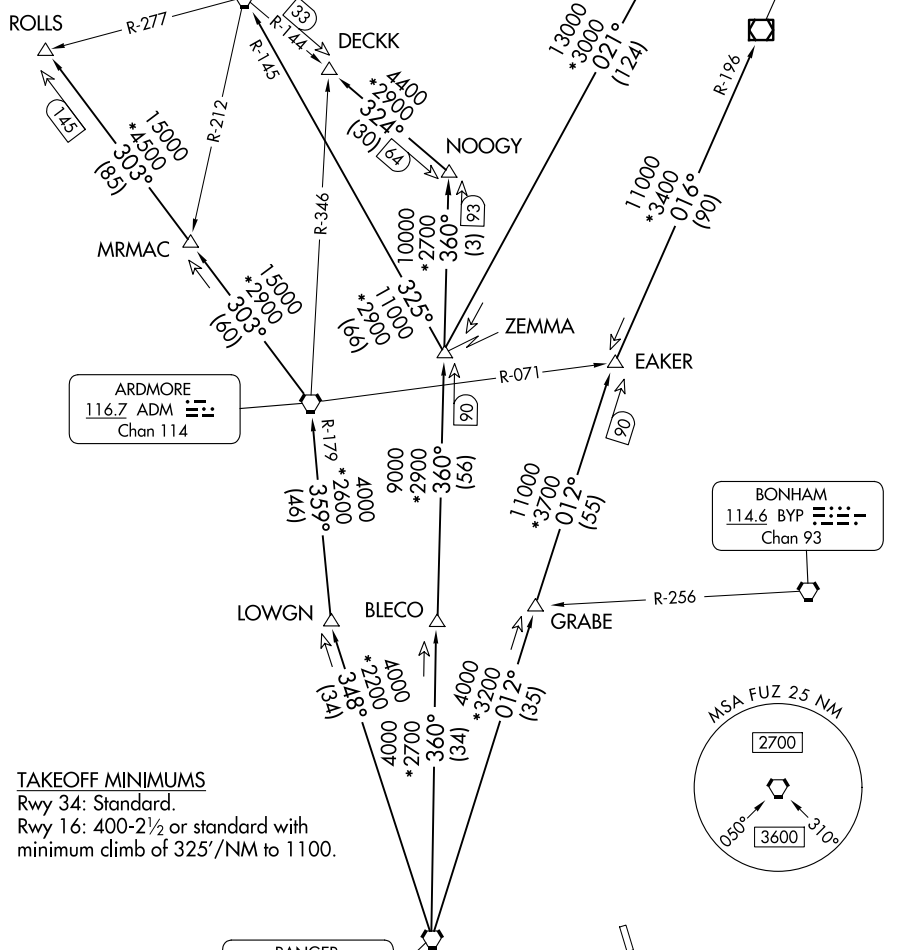
WILL ROGERS
 114.1 IRW :...:
 Chan 88

OKMULGEE
 114.9 OKM :...:
 Chan 96

ARDMORE
 116.7 ADM :...:
 Chan 114

BONHAM
 114.6 BYP :...:
 Chan 93

RANGER
 115.7 FUZ :...:
 Chan 104



TAKEOFF MINIMUMS
 Rwy 34: Standard.
 Rwy 16: 400-2½ or standard with
 minimum climb of 325'/NM to 1100.

NOTE: Chart not to scale.

(CONTINUED ON FOLLOWING PAGE)

SC-2, 20 MAR 2025 to 17 APR 2025

SC-2, 20 MAR 2025 to 17 APR 2025