

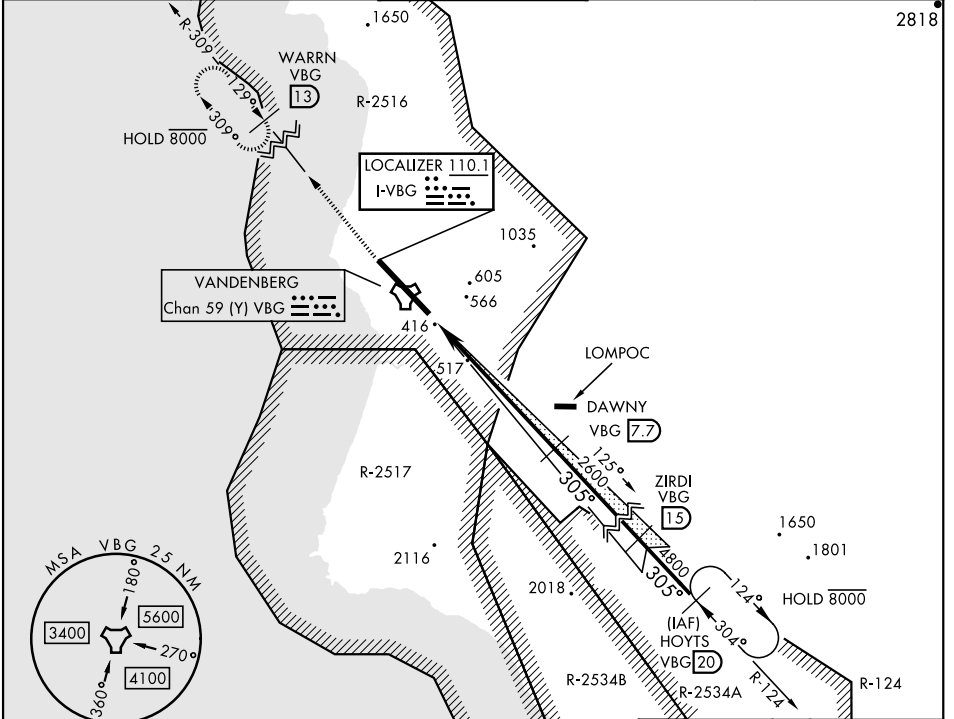
# ILS or LOC/DME RWY 30

LOC I-VBG <b>110.1</b>	APCH CRS <b>305°</b>	Rwy Idg <b>15,000</b> TDZE <b>368</b> Arprt Elev <b>368</b>
---------------------------	-------------------------	---

[USSF]

VANDENBERG SFB (KVBG)

DME required		ALSIF-2	MISSED APPROACH: Climb out VBG TACAN R-309 to WARRN and hold. Continue climb in hold maintain 4000.	
▼ * When ALS inop, increase RVR to 40 and vis to ¾ mile. ** When ALS inop, increase CAT AB RVR to 55 and vis to 1 mile, CAT CDE vis to 1½ miles.				
ATIS <b>133.125 257.975</b>	SANTA BARBARA APP/DEP CON <b>124.15 327.8</b>	TOWER ★ <b>124.95</b> (CTAF) <b>326.2</b>	GND CON <b>121.75 275.8</b>	CLNC DEL <b>121.75 275.8</b>



SW-3, 20 MAR 2025 to 17 APR 2025

SW-3, 20 MAR 2025 to 17 APR 2025

EMERG SAFE ALT 100 NM 11,100		ELEV 368	TDZE 368		
4000 VBG R-309	WARRN VBG 13	VGSI and ILS Glideslope not coincident.	DAWNY VBG 7.8		
VBG TACAN	FABUR VBG 1.3	2600	ZIRDI VBG 15		
	VBG 2.4	4800	HOYTS VBG 20		
		6000	GS 3.00°		
			TCH 72		
CATEGORY	A	B	C	D	E
S-ILS 30 *	568/24		200	(200-½)	
S-LOC/DME 30 **	900/24	532 (600-½)	900/55	532 (600-1)	
CIRCLING	980-1 612 (700-1)	1000-1 632 (700-1)	1020-1¾ 652 (700-1¾)	1180-2¾ 812 (900-2¾)	1560-3 1192(1200-3)
HIRL Rwy 12-30					

# ILS or LOC/DME RWY 30