

# TACAN RWY 12

TACAN VBG Chan <b>59(Y)</b>	APCH CRS <b>129°</b>	Rwy ldg <b>15,000</b> TDZE <b>265</b> Arprt Elev <b>368</b>
--------------------------------	-------------------------	---

[USSF]

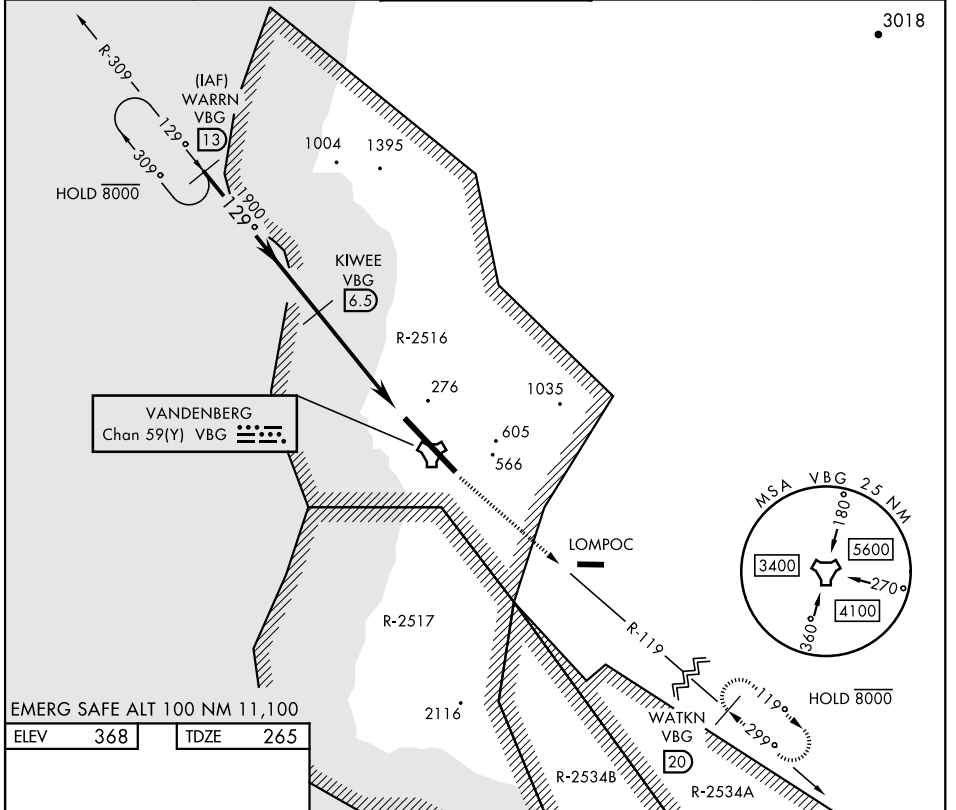
VANDENBERG SFB (KVBG)

▼ \* When ALS inop, increase CAT AB RVR to 55 and vis to 1 mile; CAT CDE vis to 1 3/8 miles.



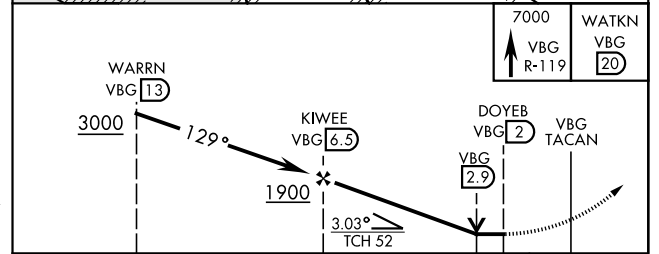
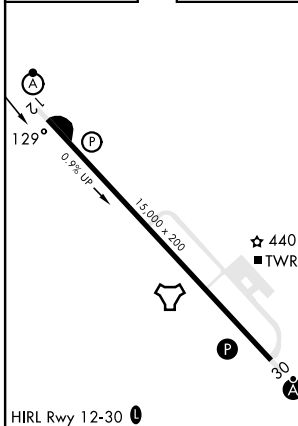
MISSED APPROACH: Climb out VBG TACAN R-119 until 20 DME (WATKN) and hold. Continue climb in hold maintain 7000.

ATIS <b>133.125 257.975</b>	SANTA BARBARA APP/DEP CON <b>124.15 327.8</b>	TOWER★ <b>124.95 0</b> (CTAF) <b>326.2</b>	GND CON <b>121.75 275.8</b>	CLNC DEL <b>121.75 275.8</b>
--------------------------------	---	---	--------------------------------	---------------------------------



EMERG SAFE ALT 100 NM 11,100

ELEV 368	TDZE 265
----------	----------



CATEGORY	A	B	C	D	E
S-12*	740/24	475 (400-1/2)	740/50	475 (400-1)	
CIRCLING	980-1 612 (700-1)	1000-1 632 (700-1)	1020-1 3/4 652 (700-1 3/4)	1180-2 3/4 812 (900-2 3/4)	1560-3 1192 (1200-3)

# TACAN RWY 12

SW-3, 20 MAR 2025 to 17 APR 2025