

LOC I-BLF <b>109.5</b>	APP CRS <b>229°</b>	Rwy ldg TDZE Apt Elev	<b>4743</b> <b>2857</b> <b>2857</b>
---------------------------	------------------------	-----------------------------	---

# ILS or LOC RWY 23

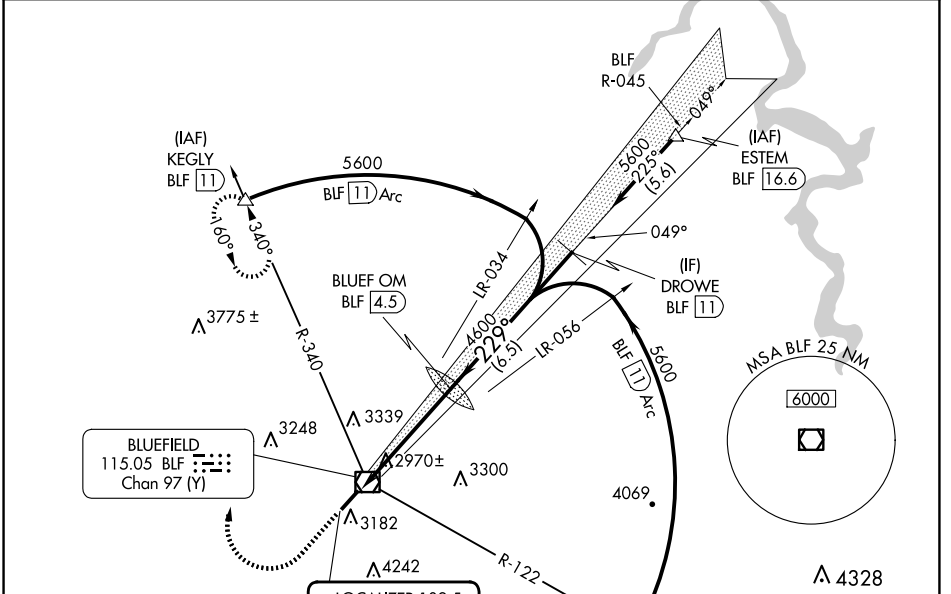
MERCER COUNTY (BLF)

DME required.

**⚠** Autopilot coupled approach NA below 3600 MSL. When local altimeter setting not received, use BKW altimeter setting and increase S-ILS 23 DA to 3600 feet and all visibilities 1 SM; increase all MDAs 460 feet and S-LOC 23 all visibilities 1 1/8 SM, and Circling Cat A/B/C 3/4 SM. Circling NA southeast of Rwy 5-23.

MISSED APPROACH: Climb to 3800 then climbing right turn to 6000 on heading 020° and BLF VOR/DME R-340 to KEGLY/BLF 11 DME and hold.

ASOS <b>132.725</b>	INDIANAPOLIS CENTER <b>126.575 257.85</b>	CTAF <b>122.9 0</b>
------------------------	--	------------------------

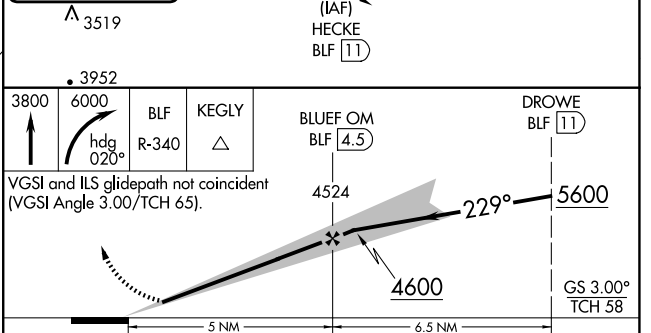
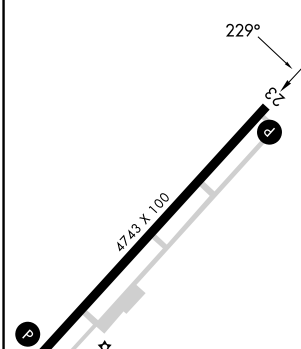


NE-4, 20 MAR 2025 to 17 APR 2025

NE-4, 20 MAR 2025 to 17 APR 2025

ELEV 2857	<b>D</b>	TDZE 2857
-----------	----------	-----------

LOCALIZER 109.5  
I-BLF



CATEGORY	DME			
	A	B	C	D
S-ILS 23	3157-1		300 (300-1)	3157-7/8 300 (300-7/8)
S-LOC 23	3520-1	663 (700-1)	3520-1 7/8 663 (700-1 7/8)	3520-2 663 (700-2)
CIRCLING	3520-1	663 (700-1)	3640-2 1/4 783 (800-2 1/4)	3780-3 923 (1000-3)
			4524	5600

BLUEFIELD, WEST VIRGINIA  
Amdt 15F 20FEB25

37°18'N - 81°12'W

# MERCER COUNTY (BLF)

## ILS or LOC RWY 23