

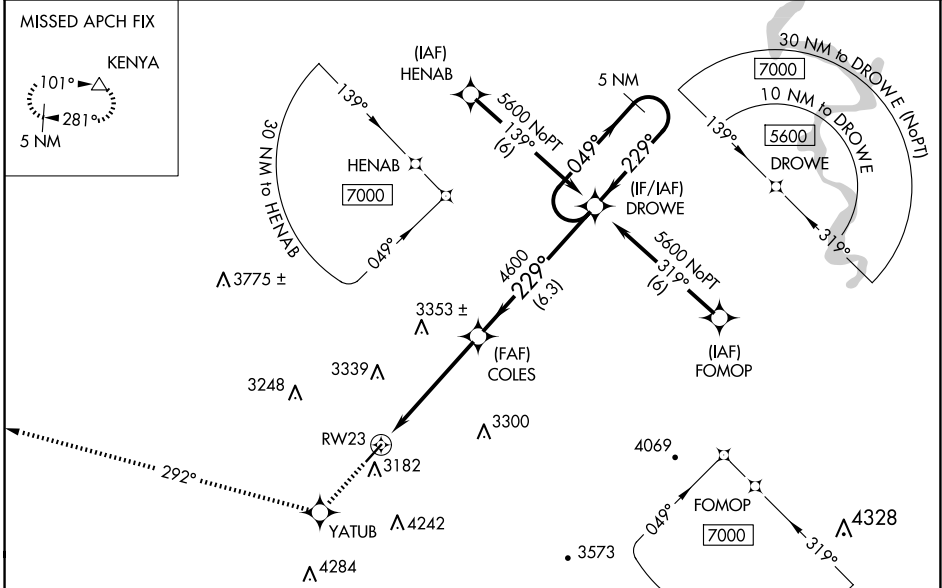
WAAS CH <b>50207</b> <b>W23A</b>	APP CRS <b>229°</b>	Rwy Idg <b>4743</b> TDZE <b>2856</b> Apt Elev <b>2857</b>
--	------------------------	---

# RNAV (GPS) RWY 23

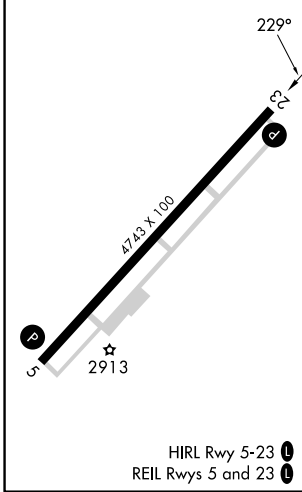
MERCER COUNTY (B.L.F.)

RNP APCH.	MISSED APPROACH: Climb to 6000 direct YATUB and via track 292° to KENYA and hold.
<p>▼ VDP NA when using Beckley altimeter setting. When local altimeter setting not received, use Beckley altimeter setting and increase all DA 443 feet and all MDA 460 feet; increase LPV all Cats visibility to 2½ miles, LNAV Cat A visibility to 1¼ miles, Cat B to 1½ miles and Cat C and D to 3 miles.</p>	

ASOS <b>132.725</b>	INDIANAPOLIS CENTER <b>126.575 257.85</b>	CTAF <b>122.9</b>
------------------------	--	----------------------



ELEV 2857	<b>D</b> TDZE 2856
-----------	--------------------



6000	YATUB	tr 292°	KENYA	VGSI and RNAV glidepath not coincident (VGSI Angle 3.00/TCH 65).
*LNAV only				
		*2.3 NM to RWY23		
		2.3 NM	2.9 NM	6.3 NM
				5 NM Holding Pattern
				049° → 5600
				← 229°
				GP 3.00° TCH 58

CATEGORY	A	B	C	D
LPV DA	3156-1 300 (300-1)			
LNAV MDA	3640-1 784 (800-1)	3640-1¼ 784 (800-1¼)	3640-2¼ 784 (800-2¼)	3640-2½ 784 (800-2½)

NE-4, 20 MAR 2025 to 17 APR 2025

NE-4, 20 MAR 2025 to 17 APR 2025